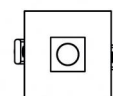




Downlights | 1 x powerLED 8 W DC 700 mA | CRI 90  
**90666N30**



□71



64

## Technical data

Type	Encasement with flange
Installation position	Ceiling
Installation environment	Indoor
Light Source	LED
Circuit structure	powerLED
Optics	Flood
Light emission direction	downward
Nominal power	8 W DC
Source lumens	796 lm
Input voltage range	700mA
CCT / Tone	4000 K
Colour rendering index	90 Ra
C.C. / C.V.	CC
Safety class	3
IP	IP44
Optical compartment IP	IP65
Glow wire test	850°
Direct mounting on normally flammable surfaces	Yes
CE	Yes
Driver included	No
Dimmable article	DALI - 1-10V
Directional	No
Tilting	No
Walk-over	No
Drive-over	No
Cable included	No
Resin potting	No
Type of light emission	Single emission
Net weight	0.192 Kg
Electrostatic discharge protection	No
Surge protection	No
Optics technology	F.O.L. - Honey comb
Product technological characteristics	TVS

## Finishing casing

Material	Die-cast Aluminium EN AB - 46100
Colour	White
Processing	Powder coating

## Finishing diffuser

Material	UV Resistant Polycarbonate
Colour	transparent

## Finishing radiator

Material	Die-cast Aluminium EN AB - 46100
Processing	Tumbling

## Electronics



99147  
On/Off Driver 198~264V AC (2 - 3 art.)



99735  
Multi Power 198~264V AC / 180~275V DC (1 art.)



99733  
1-10V Multi Power 198~264V AC / 180~275V DC (1 art.)



C-E100012  
Push and Simply Dim - DALI-2 Controller (1 art.)



C-E100016  
Push and Simply Dim - DALI-2 Controller (2 - 3 art.)

## Downlights | 1 x powerLED 8 W DC 700 mA | CRI 90 | Base 90666N30

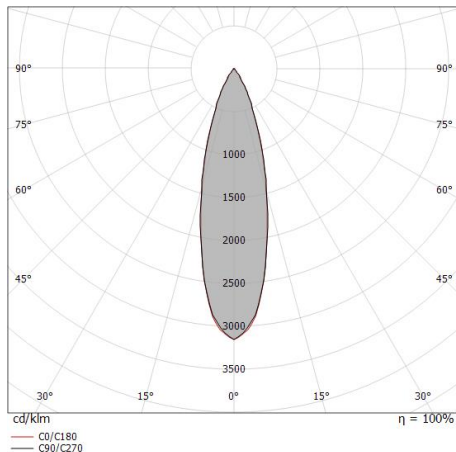
Single emission recessed downlights for indoor application. The natural white LED light source with a flood light distribution is composed of 1 powered LEDs with CCT of 4000 K and a CRI 90; the source luminous flux is 796 lm, with a 99.5 lm/W nominal luminous efficacy.

The device body is made of die-cast aluminium en ab - 46100 and features a white finish, processed by means of powder coating; the diffuser is made of uv resistant polycarbonate. The ingress protection degree is IP44; the total weight is of 0.192 kg. The power supply driver is not provided and is to be ordered separately.

The total absorbed power is 8 W.

The device features protection class III and can be ceiling-mounted, with a 64 mm diameter hole (in plasterboard) with an outer casing, code 89374(for concrete or masonry).

Compliant with the EN 60598-1 standard and its specific provisions.



Distance [m]	Cone diameter [m]	illuminance [lx]
0.5	0.25 0.25	E(0°) 3866 E(C90) 14.1° 1774 E(C0) 14.0° 1780
1.0	0.50 0.50	E(0°) 967 E(C90) 14.1° 444 E(C0) 14.0° 445
1.5	0.75 0.75	E(0°) 430 E(C90) 14.1° 197 E(C0) 14.0° 198
2.0	1.00 1.00	E(0°) 242 E(C90) 14.1° 111 E(C0) 14.0° 111
2.5	1.26 1.25	E(0°) 155 E(C90) 14.1° 71 E(C0) 14.0° 71
3.0	1.51 1.50	E(0°) 107 E(C90) 14.1° 49 E(C0) 14.0° 49

— C0/C180 (Half-peak divergence: 28.0°)  
— C90/C270 (Half-peak divergence: 28.2°)

### Energy efficiency class

This product contains a light source of energy efficiency class F.

### Illuminotechnical Features

Light Output Ratio (LOR)	38 %
Source lumens	796 lm
Delivered lumens	307 lm
Consumption	8 W
Luminaire efficacy	38 lm/W
Colour temperature	4000 K
Standard Deviation of Colour Matching	3 Step MacAdam
Colour rendering index	90 Ra
Black Body Locus	On
Standard Operating Ambient Temperature	-20 / +50°C
Ordinary temperature on the glass	40°C

### LED Life / Failure Ratio

L70 B10 C0 247450h (at Tj 60 Ta 25)

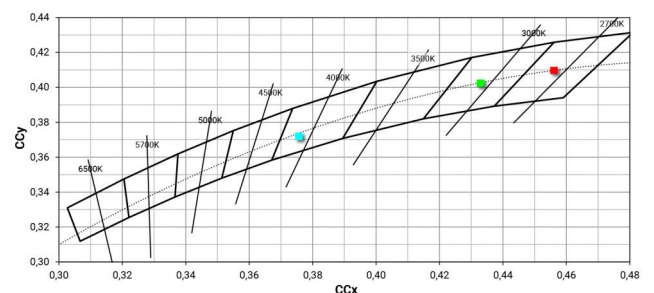
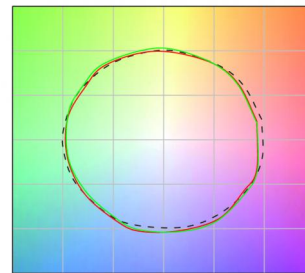
### UGR

UGR axial	14.6
UGR transversal	14.5
X=4H   Y=8H	S=0.25H
Reflection factor	70/50/20

### OPTICAL

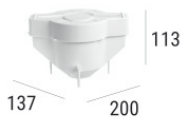
C0/C180 optics	28°
Light distribution simmetry	Symmetrical

### COLOR VECTOR GRAPHIC





**90666N30**



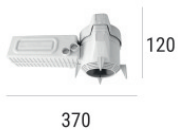
Outer casing

installation position: ceiling; type of installation: masonry L=200mm, H=113mm, D=137mm.

Material:polypropylene, colour:white.

**Code**

89373



Outer casing

installation position: ceiling; type of installation: masonry L=370mm, H=120mm, D=200mm.

Material:polypropylene, colour:white.

**Code**

89374