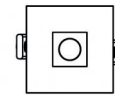
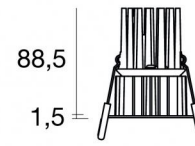




Downlights | 1 x powerLED 8 W DC 700 mA | CRI 90  
**90666N15**



□71

64

Technical data	
Type	Encasement with flange
Installation position	Ceiling
Installation environment	Indoor
Light Source	LED
Circuit structure	powerLED
Optics	Spot
Light emission direction	downward
Nominal power	8 W DC
Source lumens	796 lm
Input voltage range	700mA
CCT / Tone	4000 K
Colour rendering index	90 Ra
C.C. / C.V.	CC
Safety class	3
IP	IP44
Optical compartment IP	IP65
Glow wire test	850°
Direct mounting on normally flammable surfaces	Yes
CE	Yes
Driver included	No
Dimmable article	DALI - 1-10V
Directional	No
Tilting	No
Walk-over	No
Drive-over	No
Cable included	No
Resin potting	No
Type of light emission	Single emission
Net weight	0.192 Kg
Electrostatic discharge protection	No
Surge protection	No
Optics technology	F.O.L. - Honey comb
Product technological characteristics	TVS

### Finishing casing

Material	Die-cast Aluminium EN AB - 46100
Colour	White
Processing	Powder coating

### Finishing diffuser

Material	UV Resistant Polycarbonate
Colour	transparent

### Finishing radiator

Material	Die-cast Aluminium EN AB - 46100
Processing	Tumbling

### Electronics



99147  
On/Off Driver 198~264V AC (2 - 3 art.)



99735  
Multi Power 198~264V AC / 180~275V DC (1 art.)



99733  
1-10V Multi Power 198~264V AC / 180~275V DC (1 art.)



C-E100012  
Push and Simply Dim - DALI-2 Controller (1 art.)



C-E100016  
Push and Simply Dim - DALI-2 Controller (2 - 3 art.)



## Downlights | 1 x powerLED 8 W DC 700 mA | CRI 90 | Base 90666N15

Single emission recessed downlights for indoor application. The natural white LED light source with a spot light distribution is composed of 1 powered LEDs with CCT of 4000 K and a CRI 90; the source luminous flux is 796 lm, with a 99.5 lm/W nominal luminous efficacy.

The device body is made of die-cast aluminium en ab - 46100 and features a white finish, processed by means of powder coating; the diffuser is made of uv resistant polycarbonate. The ingress protection degree is IP44; the total weight is of 0.192 kg. The power supply driver is not provided and is to be ordered separately.

The total absorbed power is 8 W.

The device features protection class III and can be ceiling-mounted, with a 64 mm diameter hole (in plasterboard) with an outer casing, code 89374(for concrete or masonry).

Compliant with the EN 60598-1 standard and its specific provisions.

### Energy efficiency class

This product contains a light source of energy efficiency class F.

### Illuminotechnical Features

Light Output Ratio (LOR)	52 %
Source lumens	796 lm
Delivered lumens	414 lm
Consumption	8 W
Luminaire efficacy	51 lm/W
Colour temperature	4000 K
Standard Deviation of Colour Matching	3 Step MacAdam
Colour rendering index	90 Ra
Black Body Locus	On
Standard Operating Ambient Temperature	-20 / +50°C
Ordinary temperature on the glass	40°C

### LED Life / Failure Ratio

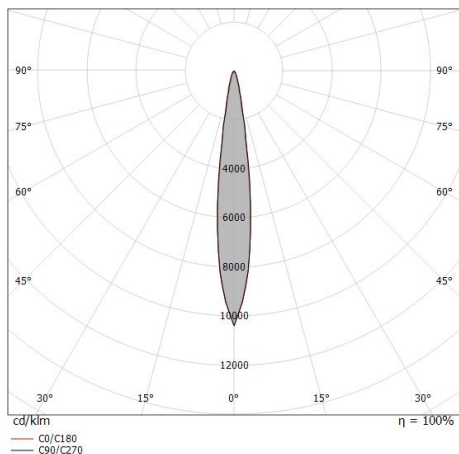
L70 B10 C0 247450h (at Tj 60 Ta 25 )

### UGR

UGR axial	10.7
UGR transversal	10.4
X=4H   Y=8H	S=0.25H
Reflection factor	70/50/20

### OPTICAL

C0/C180 optics	14°
Light distribution simmetry	Symmetrical



Distance [m]	Cone diameter [m]	illuminance [lx]
0.5	0.18 0.18	E(0°) 17225 E(C90) 7.3° 8446 E(C0) 7.2° 8512
1.0	0.26 0.25	E(0°) 4306 E(C90) 7.3° 2111 E(C0) 7.2° 2128
1.5	0.38 0.38	E(0°) 1914 E(C90) 7.3° 938 E(C0) 7.2° 946
2.0	0.51 0.51	E(0°) 1077 E(C90) 7.3° 528 E(C0) 7.2° 532
2.5	0.64 0.63	E(0°) 689 E(C90) 7.3° 338 E(C0) 7.2° 340
3.0	0.77 0.76	E(0°) 478 E(C90) 7.3° 235 E(C0) 7.2° 236

— C0/C180 (Half-peak divergence: 14.4°)  
— C90/C270 (Half-peak divergence: 14.6°)

### COLOR VECTOR GRAPHIC





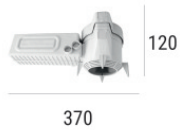
Outer casing

installation position: ceiling; type of installation: masonry L=200mm, H=113mm, D=137mm.

Material:polypropylene, colour:white.

**Code**

89373



Outer casing

installation position: ceiling; type of installation: masonry L=370mm, H=120mm, D=200mm.

Material:polypropylene, colour:white.

**Code**

89374