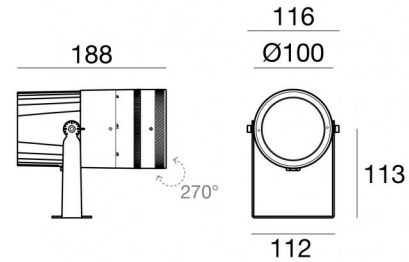


# Iris67 Elliptic



Projectors | 1 arrayLED 30 W DC 840 mA | CRI 80  
84559W88



Technical data	
Type	Surface
Installation position	Wall lights - Ceiling - Floor
Installation environment	Outdoor
Light Source	LED
Circuit structure	arrayLED
Optics	Adjustable Focus Elliptic
Light emission direction	frontal
Nominal power	30 W DC
Source lumens	4741 lm
Input voltage range	840mA
CCT / Tone	3000 K
Colour rendering index	80 Ra
C.C. / C.V.	CC
Safety class	3
IP	IP67
IK	IK10
Glow wire test	850°
Direct mounting on normally flammable surfaces	Yes
CE	Yes
Driver included	No
Dimmable article	DALI - 1-10V
Directional	Swivelling
total angle (vertical plane)	270 °
Tilting	No
Walk-over	No
Drive-over	No
Cable included	Yes
Cable length	1 m
Resin potting	Yes
Type of light emission	Single emission
Net weight	2 Kg
Electrostatic discharge protection	No
Surge protection	No
Product technological characteristics	Acquastop

## Finishing casing

Material	Die-cast Aluminium EN AB - 46100
Colour	Black
Processing	Open pore anodizing + Powder Coating

## Finishing diffuser

Material	Extra clear glass - Tempered
Colour	transparent

## Finishing bracket

Material	AISI 316 steel
Colour	Black
Processing	Powder coating

## Electronics



99269  
On/Off Driver 198-264V AC (1 art.)

# Iris67 Elliptic



Projectors | 1 arrayLED 30 W DC 840 mA | CRI 80 | Angle Max 84559W88

Single emission projectors for outdoor application. The warm white LED light source with a adjustable focus elliptic light distribution is composed of 1 arrayed LEDs with CCT of 3000 K and a CRI 80; the source luminous flux is 4741 lm, with a 158.0 lm/W nominal luminous efficacy.

The device body is made of die-cast aluminium en ab - 46100 and features a black finish, processed by means of open pore anodizing + powder coating; the diffuser is made of extra clear glass - tempered. The ingress protection degree is IP67; the total weight is of 2 kg. The power supply driver is not provided and is to be ordered separately.

The total absorbed power is 30 W. The power supply cable is included and features a 1 m length.

The device features protection class III and can be wall lights, ceiling or floor-mounted.

Compliant with the EN 60598-1 standard and its specific provisions.

## Energy efficiency class

This product contains a light source of energy efficiency class E.

## Illuminotechnical Features

Light Output Ratio (LOR)	28 %
Source lumens	4741 lm
Delivered lumens	1360 lm
Consumption	30 W
Luminaire efficacy	45 lm/W
Colour temperature	3000 K
Standard Deviation of Colour Matching	2 Step MacAdam
Colour rendering index	80 Ra
Standard Operating Ambient Temperature	-20 / +50°C
Ordinary temperature on the glass	40°C

## LED Life / Failure Ratio

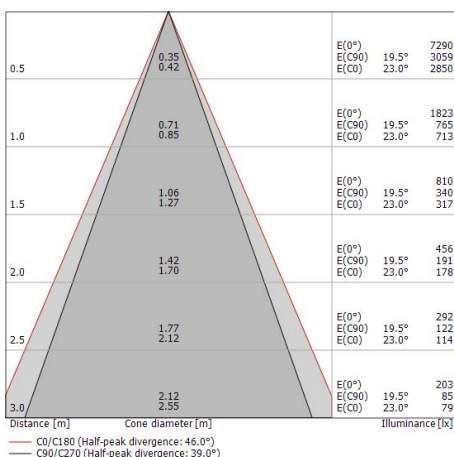
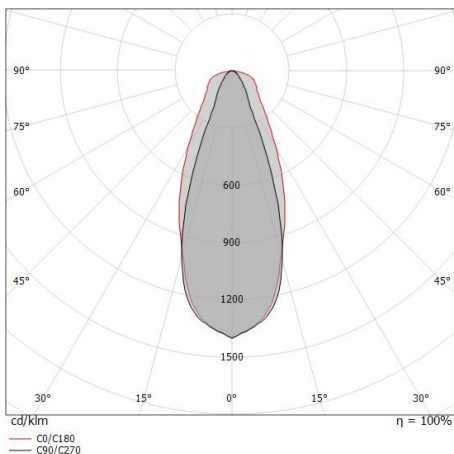
L70 B10 C0 252000h (at Tj 65 Ta 25 )

## UGR

UGR transversal	30.8
UGR axial	21
X=4H   Y=8H	S=0.25H
Reflection factor	70/50/20

## OPTICAL

C0/C180 optics	46°
C90/C270 optics	39°
Light distribution simmetry	Symmetrical 2 assis



# Iris67 Elliptic



Projectors | 1 arrayLED 30 W DC 840 mA | CRI 80 | Angle Min  
84559W88

Single emission projectors for outdoor application. The warm white LED light source with a adjustable focus elliptic light distribution is composed of 1 arrayed LEDs with CCT of 3000 K and a CRI 80; the source luminous flux is 4741 lm, with a 158.0 lm/W nominal luminous efficacy.

The device body is made of die-cast aluminium en ab - 46100 and features a black finish, processed by means of open pore anodizing + powder coating; the diffuser is made of extra clear glass - tempered. The ingress protection degree is IP67; the total weight is of 2 kg. The power supply driver is not provided and is to be ordered separately.

The total absorbed power is 30 W. The power supply cable is included and features a 1 m length.

The device features protection class III and can be wall lights, ceiling or floor-mounted.

Compliant with the EN 60598-1 standard and its specific provisions.

## Energy efficiency class

This product contains a light source of energy efficiency class E.

## Illuminotechnical Features

Light Output Ratio (LOR)	21 %
Source lumens	4741 lm
Delivered lumens	1040 lm
Consumption	30 W
Luminaire efficacy	34 lm/W
Colour temperature	3000 K
Standard Deviation of Colour Matching	2 Step MacAdam
Colour rendering index	80 Ra
Standard Operating Ambient Temperature	-20 / +50°C
Ordinary temperature on the glass	40°C

## LED Life / Failure Ratio

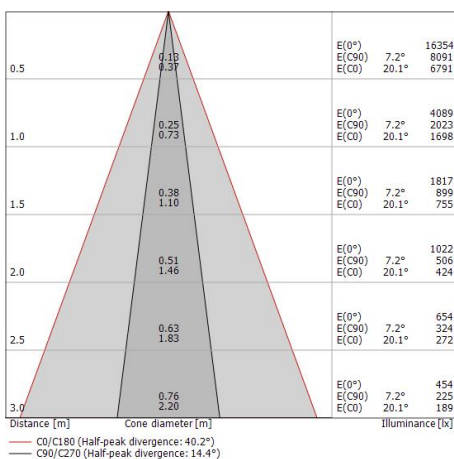
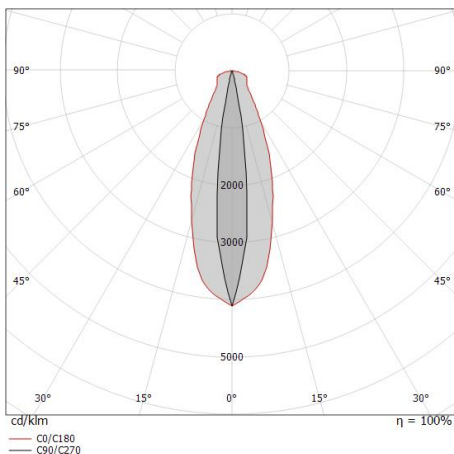
L70 B10 C0 252000h (at Tj 65 Ta 25 )

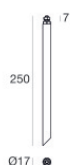
## UGR

UGR transversal	32.7
UGR axial	11.5
X=4H   Y=8H	S=0.25H
Reflection factor	70/50/20

## OPTICAL

C0/C180 optics	40°
C90/C270 optics	14°
Light distribution simmetry	Symmetrical 2 assis





Picket - L. 250mm  
installation position: land,Cover material: aisi 304 steel

**Code**  
84890



Picket - L. 700mm  
installation position: land,Cover material: aisi 304 steel

**Code**  
98112



Picket - L. 1000mm  
installation position: land,Cover material: aisi 304 steel

**Code**  
C-F500001