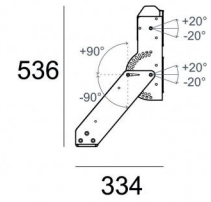
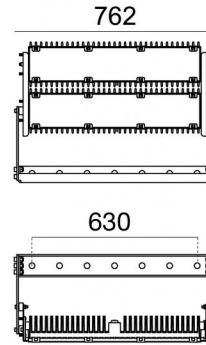


Biglamp Pro



Projectors | 56 + 56 x powerLEDs 900 W DC 3600 mA
CRI 70
84433N35



Technical data	
Type	Surface
Installation position	Wall lights - Ceiling - Floor
Installation environment	Outdoor
Light Source	LED
Circuit structure	powerLEDs
Optics	Medium Flood + Medium Flood
Light emission direction	frontal + frontal
Nominal power	900 W DC
Source lumens	157562 lm
CCT / Tone	4000 K
Colour rendering index	70 Ra
C.C. / C.V.	CC
Safety class	3
IP	IP66
IK	IK08
Glow wire test	850°
Direct mounting on normally flammable surfaces	Yes
CE	Yes
Driver included	No
Dimmable article	DALI - 1-10V
Directional	Swivelling
total angle (vertical plane)	20 °
total angle (horizontal plane)	0 °
Tilting	Yes
total angle (horizontal plane)	0 °
total angle (vertical plane)	90 °
Walk-over	No
Drive-over	No
Cable included	Yes
Cable length	1 m
Resin potting	No
Type of light emission	Double emission
Surface exposed to lateral wind	0,018 m ²
Plant surface exposed to the wind	0,134 m ²
Net weight	28 Kg
Electrostatic discharge protection	No
Surge protection	No
Product technological characteristics	TCS

Finishing casing

Material	Die-cast Aluminium EN AB - 46100
Colour	Aluminium

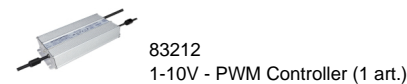
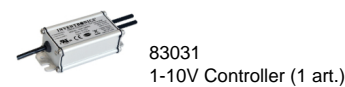
Finishing diffuser

Material	Extra clear glass - Tempered
Colour	transparent

Finishing bracket

Material	Galvanised Iron
Colour	Grey
Processing	Cataphoresis + Powder painting

Electronics





Projectors | 56 + 56 x powerLEDs 900 W DC 3600 mA | CRI 70 | Base 84433N35

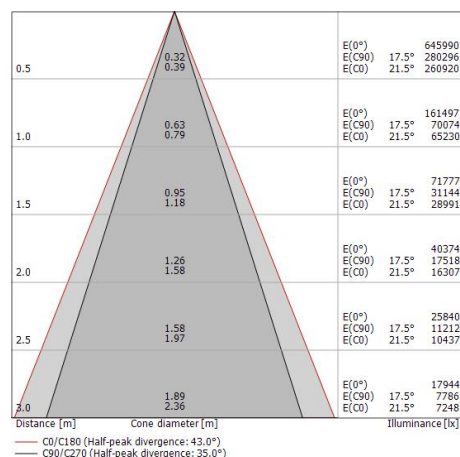
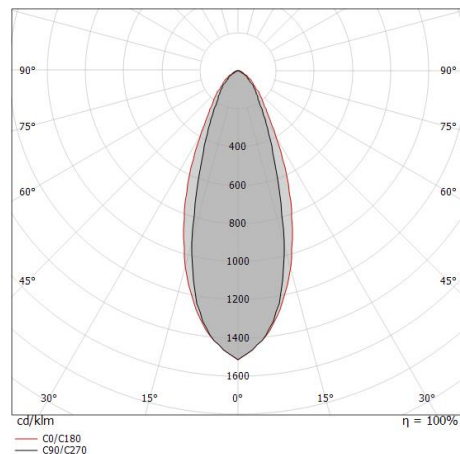
Double emission projectors for outdoor application. The natural white LED light source with a medium wide flood light distribution is composed of 56 powered LEDs with CCT of 4000 K and a CRI 70; the source luminous flux is 78781 lm, with a 175.1 lm/W nominal luminous efficacy. The natural white LED light source with a medium wide flood light distribution is composed of 56 powered LEDs with CCT of 4000 K and a CRI 70; the source luminous flux is 78781 lm, with a 175.1 lm/W nominal luminous efficacy.

The device body is made of die-cast aluminium en ab - 46100 and features a aluminium finish; the diffuser is made of extra clear glass - tempered. The ingress protection degree is IP66; the total weight is of 28 kg. The power supply driver is not provided and is to be ordered separately.

The total absorbed power is 900 W. The power supply cable is included and features a 1 m length.

The device features protection class III and can be wall lights, ceiling or floor-mounted.

Compliant with the EN 60598-1 standard and its specific provisions.



Energy efficiency class

This product contains 2 light sources of energy efficiency class E.

Illuminotechnical Features

Light Output Ratio (LOR)	67 %
Source lumens	157562 lm
Delivered lumens	106769 lm
Consumption	900 W
Luminaire efficacy	118 lm/W
Colour temperature	4000 K
Standard Deviation of Colour Matching	5 Step MacAdam
Colour rendering index	70 Ra
Standard Operating Ambient Temperature	-20 / +50°C
Ordinary temperature on the glass	40°C

LED Life / Failure Ratio

L90 B10 C0 90000h (at Tj 65 Ta 25)

UGR

UGR axial	25.5
UGR transversal	27.9
X=4H Y=8H	S=0.25H
Reflection factor	70/50/20

OPTICAL

C90/C270 optics	35°
C0/C180 optics	43°
Light distribution simmetry	Symmetrical 2 assis