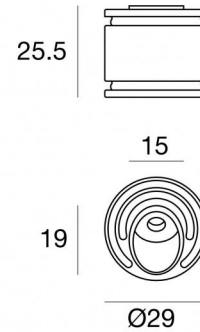
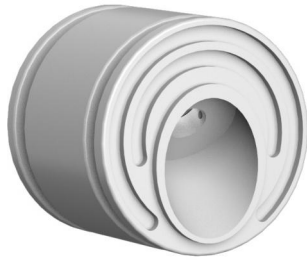




Wall Lights | 1 x powerLED 1 W DC 350 mA | CRI 80  
84078W70



Technical data	
Type	- - -
Installation position	Wall lights
Installation environment	Outdoor
Light Source	LED
Circuit structure	powerLED
Optics	Asymmetric Wallwasher
Light emission direction	downward
Nominal power	1 W DC
Source lumens	106 lm
Input voltage range	350mA
CCT / Tone	3000 K
Colour rendering index	80 Ra
C.C. / C.V.	CC
Safety class	3
IP	IP65
IK	IK10
Glow wire test	850°
Direct mounting on normally flammable surfaces	Yes
CE	Yes
Driver included	No
Dimmable article	DALI - 1-10V
Directional	No
Tilting	No
Walk-over	No
Drive-over	No
Cable included	Yes
Cable length	1 m
Resin potting	Yes
Type of light emission	Single emission
Net weight	0.05 Kg
Electrostatic discharge protection	No
Surge protection	No

### Finishing casing

Material	Aluminium
Colour	White
Processing	Coating

### Electronics



89421  
On/Off Driver 198~264V AC / 176~275V DC (3 - 6 art.)



89419  
On/Off Driver 198~264V AC / 180~275V DC (1 - 2 art.)



C-E200006  
On/Off Driver 198~264V AC / 180~275V DC (6 - 12 art.)



## Wall Lights | 1 x powerLED 1 W DC 350 mA | CRI 80 | Base 84078W70

Single emission wall lights for outdoor application. The warm white LED light source with a asymmetric wallwasher light distribution is composed of 1 powered LEDs with CCT of 3000 K and a CRI 80; the source luminous flux is 106 lm, with a 106.0 lm/W nominal luminous efficacy.

The device body is made of aluminium and features a white finish, processed by means of coating. The ingress protection degree is IP65; the total weight is of 0.05 kg. The power supply driver is not provided and is to be ordered separately.

The total absorbed power is 1 W. The power supply cable is included and features a 1 m length.

The device features protection class III and can be wall lights-mounted, with a 33 mm diameter hole (in plasterboard) with an outer casing, code 83155(for concrete or masonry).

Compliant with the EN 60598-1 standard and its specific provisions.

### Energy efficiency class

This product contains a light source of energy efficiency class E.

### Illuminotechnical Features

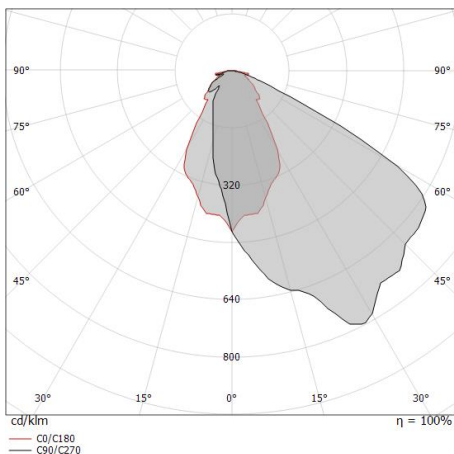
Light Output Ratio (LOR)	36 %
Source lumens	106 lm
Delivered lumens	39 lm
Consumption	1,0 W
Luminaire efficacy	39 lm/W
Colour temperature	3000 K
Standard Deviation of Colour Matching	1/16 ANSI BIN
Colour rendering index	80 Ra
Standard Operating Ambient Temperature	-20 / +50°C
Ordinary temperature on the glass	40°C

### LED Life / Failure Ratio

L70 B10 C0 197960h (at Tj 60 Ta 25 )

### OPTICAL

C0/C180 optics	63°
Light distribution simmetry	Asymmetrical



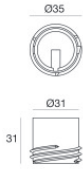
0.5	0.61	E(0°) E(C0)	31.4°	68 21
1.0	1.22	E(0°) E(C0)	31.4°	17 5
1.5	1.83	E(0°) E(C0)	31.4°	8 2
2.0	2.44	E(0°) E(C0)	31.4°	4 1
2.5	3.05	E(0°) E(C0)	31.4°	3 1
3.0	3.66	E(0°) E(C0)	31.4°	2 1

Distance [m]      Cone diameter [m]      Illuminance [lx]

— C0/C180 (Half-peak divergence: 62.8°)



Quara\_F | Step Lights | Accessories  
**84078W70**



Outer casing

installation position: wall lights; type of installation: drywall L=35mm, H=31mm, D=35mm

**Code**

83155