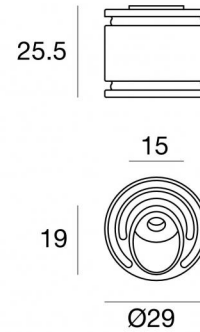
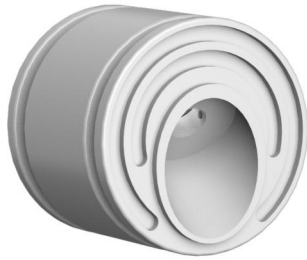




Wall Lights | 1 x powerLED 1 W DC 350 mA | CRI 80
84078M70



Technical data	
Type	- - -
Installation position	Wall lights
Installation environment	Outdoor
Light Source	LED
Circuit structure	powerLED
Optics	Asymmetric Wallwasher
Light emission direction	downward
Nominal power	1 W DC
Source lumens	98 lm
Input voltage range	350mA
CCT / Tone	2700 K
Colour rendering index	80 Ra
C.C. / C.V.	CC
Safety class	3
IP	IP65
IK	IK10
Glow wire test	850°
Direct mounting on normally flammable surfaces	Yes
CE	Yes
Driver included	No
Dimmable article	DALI - 1-10V
Directional	No
Tilting	No
Walk-over	No
Drive-over	No
Cable included	Yes
Cable length	1 m
Resin potting	Yes
Type of light emission	Single emission
Net weight	0.05 Kg
Electrostatic discharge protection	No
Surge protection	No

Finishing casing

Material	Aluminium
Colour	White
Processing	Coating

Electronics



89421
On/Off Driver 198~264V AC / 176~275V DC (1 - 6 art.)



89419
On/Off Driver 198~264V AC / 176~275V DC (1 - 2 art.)



C-E200006
On/Off Driver 198~264V AC / 180~275V DC (1 - 12 art.)



Wall Lights | 1 x powerLED 1 W DC 350 mA | CRI 80 | Base 84078M70

Single emission wall lights for outdoor application. The super warm white LED light source with a asymmetric wallwasher light distribution is composed of 1 powerLED LEDs with CCT of 2700 K and a CRI 80; the source luminous flux is 98 lm, with a 98.0 lm/W nominal luminous efficacy.

The device body is made of aluminium and features a white finish, processed by means of coating. The ingress protection degree is IP65; the total weight is of 0.05 kg. The power supply driver is not provided and is to be ordered separately.

The total absorbed power is 1 W. The power supply cable is included and features a 1 m length.

The device features protection class III and can be wall lights-mounted, with a 33 mm diameter hole (in plasterboard) with an outer casing, code 83155(for concrete or masonry).

Compliant with the EN 60598-1 standard and its specific provisions.

Energy efficiency class

This product contains a light source of energy efficiency class F.

Illuminotechnical Features

Light Output Ratio (LOR)	37 %
Source lumens	98 lm
Delivered lumens	37 lm
Consumption	1,0 W
Luminaire efficacy	37 lm/W
Colour temperature	2700 K
Standard Deviation of Colour Matching	1/16 ANSI BIN
Colour rendering index	80 Ra

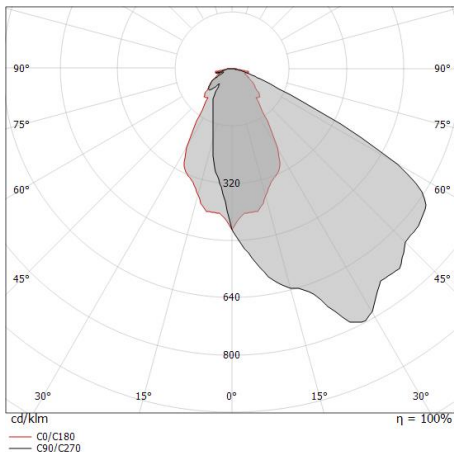
Standard Operating Ambient Temperature	-20 / +50°C
Ordinary temperature on the glass	40°C

LED Life / Failure Ratio

L70 B10 C0 197960h (at Tj 60 Ta 25)

OPTICAL

C0/C180 optics	63°
Light distribution symmetry	Asymmetrical



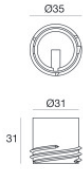
Distance [m]	Cone diameter [m]	Illuminance [lx]
0.5	0.61	E(0°) 65 E(C0) 20
1.0	1.22	E(0°) 16 E(C0) 5
1.5	1.83	E(0°) 7 E(C0) 2
2.0	2.44	E(0°) 4 E(C0) 1
2.5	3.05	E(0°) 3 E(C0) 1
3.0	3.66	E(0°) 2 E(C0) 1

Distance [m] Cone diameter [m] Illuminance [lx]

— C0/C180 (Half-peak divergence: 62.8°)



Quara_F | Step Lights | Accessories
84078M70



Outer casing

installation position: wall lights; type of installation: drywall L=35mm, H=31mm, D=35mm

Code

83155