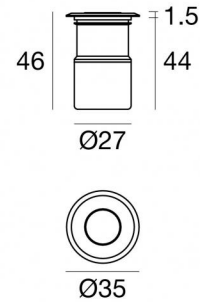
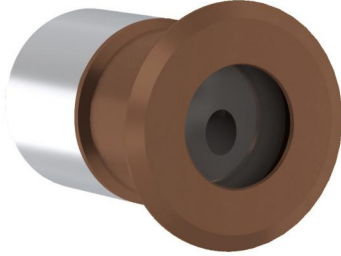




Wall Lights | 1 x powerLED 1.5 W DC 24 V | CRI 90
84076W07



Technical data

Type	Encasement with flange - -
Installation position	Floor
Installation environment	Outdoor
Light Source	LED
Circuit structure	powerLED
Optics	Asymmetric Wallwasher
Light emission direction	upward
Nominal power	1.5 W DC
Source lumens	199 lm
Input voltage range	24 V
CCT / Tone	3000 K
Colour rendering index	90 Ra
C.C. / C.V.	CV
Safety class	3
IP	IP66
IK	IK05
Glow wire test	850°
Direct mounting on normally flammable surfaces	Yes
CE	Yes
Driver included	No
C.V. - C.C. Converter	Converter 24V included
Dimmable article	DALI - 1-10V
Directional	No
Tilting	No
Walk-over	Yes
Drive-over	No
Cable included	Yes
Cable length	1 m
Resin potting	Yes
Type of light emission	Single emission
Net weight	0.174 Kg
Electrostatic discharge protection	No
Surge protection	No
Product technological characteristics	TVS

Finishing casing

Material	OT58 brass
Colour	Dark brown
Processing	Powder coating

Finishing base

Material	Stainless steel 316
Colour	steel

Electronics



89488
On/Off Driver 190~250V AC / 180~275V DC 15 W (1 - 10 art.)



89179
On/Off Driver 198~264V AC 24 W (1 - 16 art.)



89359
On/Off Driver 198~264V AC / 180~275V DC 48 W (1 - 32 art.)



99331
On/Off Driver 198~264V AC / 176~275V DC 150 W (1 art.)



99660
DALI - 1-10V Controller 24V DC 216 W (1 art.)



C-E500023
DALI - 1-10V - Push and Simply Dim Controller 8~53V DC 576 W (1 art.)

Cables Electrification

Cable connector	No
-----------------	----



Wall Lights | 1 x powerLED 1.5 W DC 24 V | CRI 90 | Base 84076W07

Single emission wall lights for outdoor application. The warm white LED light source with a asymmetric wallwasher light distribution is composed of 1 powered LEDs with CCT of 3000 K and a CRI 90; the source luminous flux is 199 lm, with a 132.7 lm/W nominal luminous efficacy.

The device body is made of ot58 brass and features a dark brown finish, processed by means of powder coating. The ingress protection degree is IP66; the total weight is of 0.174 kg.

The total absorbed power is 1.5 W. The power supply cable is included and features a 1 m length.

The device features protection class III and can be floor-mounted with an outer casing, code 84918(for concrete or masonry).

Compliant with the EN 60598-1 standard and its specific provisions.

Energy efficiency class

This product contains a light source of energy efficiency class F.

Illuminotechnical Features

Light Output Ratio (LOR)	4 %
Source lumens	199 lm
Delivered lumens	8 lm
Consumption	1,5 W
Luminaire efficacy	8 lm/W
Colour temperature	3000 K
Standard Deviation of Colour Matching	3 Step MacAdam
Colour rendering index	90 Ra

Standard Operating Ambient Temperature -20 / +50°C

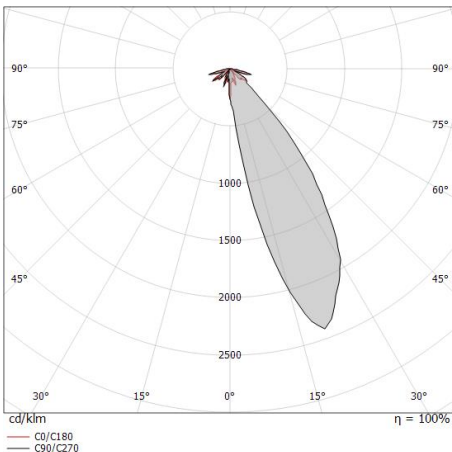
Ordinary temperature on the glass 40°C

LED Life / Failure Ratio

L70 B20 C0 214455h (at Tj 60 Ta 25)

OPTICAL

C0/C180 optics	154°
Light distribution symmetry	Asymmetrical



Distance [m]	Cone diameter [m]	Beam diameter [m]	E(0°)	E(C0)	Beam angle [°]	Illuminance [lx]
0.5	4.40	0.5	8	0	77.2°	8
1.0	8.80	1.0	2	0	77.2°	2
1.5	13.20	1.5	1	0	77.2°	1
2.0	17.61	2.0	0	0	77.2°	0
2.5	22.01	2.5	0	0	77.2°	0
3.0	26.41	3.0	0	0	77.2°	0

Distance [m] Cone diameter [m] Illuminance [lx]

— C0/C180 (Half-peak divergence: 154.4°)



Quara_R | Step Lights | Accessories
84076W07



Outer casing

installation position: floor, land; type of installation: masonry L=87mm, H=60mm, D=60mm.

Material:ABS Plastic, colour:black.

Code

84918