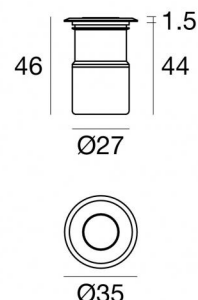
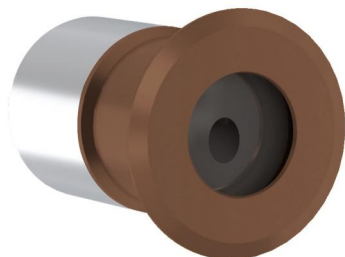




Wall Lights | 1 x powerLEDs 1.5 W DC 24 V | CRI 90  
84076N07



Technical data	
Type	Encasement with flange - -
Installation position	Floor
Installation environment	Outdoor
Light Source	LED
Circuit structure	powerLEDs
Optics	Asymmetric Wallwasher
Light emission direction	upward
Nominal power	1.5 W DC
Source lumens	213 lm
Input voltage range	24 V
CCT / Tone	4000 K
Colour rendering index	90 Ra
C.C. / C.V.	CV
Safety class	3
IP	IP66
IK	IK05
Glow wire test	850°
Direct mounting on normally flammable surfaces	Yes
CE	Yes
Driver included	No
C.V. - C.C. Converter	Converter 24V included
Dimmable article	DALI - 1-10V
Directional	No
Tilting	No
Walk-over	Yes
Drive-over	No
Cable included	Yes
Cable length	1 m
Resin potting	Yes
Type of light emission	Single emission
Net weight	0.174 Kg
Electrostatic discharge protection	No
Surge protection	No
Product technological characteristics	TVS

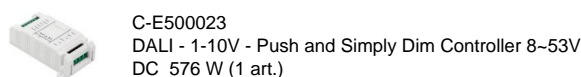
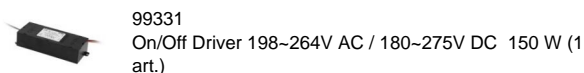
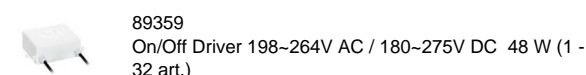
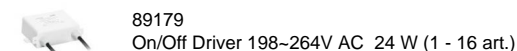
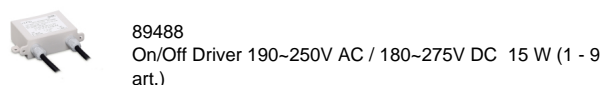
### Finishing casing

Material	OT58 brass
Colour	Dark brown
Processing	Powder coating

### Finishing base

Material	Stainless steel 316
Colour	steel

### Electronics



### Cables Electrification

Cable connector	No
-----------------	----



Wall Lights | 1 x powerLEDs 1.5 W DC 24 V | CRI 90 | Base 84076N07

Single emission wall lights for outdoor application. The natural white LED light source with a asymmetric wallwasher light distribution is composed of 1 powered LEDs with CCT of 4000 K and a CRI 90; the source luminous flux is 213 lm, with a 142.0 lm/W nominal luminous efficacy.

The device body is made of ot58 brass and features a dark brown finish, processed by means of powder coating. The ingress protection degree is IP66; the total weight is of 0.174 kg.

The total absorbed power is 1.5 W. The power supply cable is included and features a 1 m length.

The device features protection class III and can be floor-mounted with an outer casing, code 84918(for concrete or masonry).

Compliant with the EN 60598-1 standard and its specific provisions.

### Energy efficiency class

This product contains a light source of energy efficiency class E.

### Illuminotechnical Features

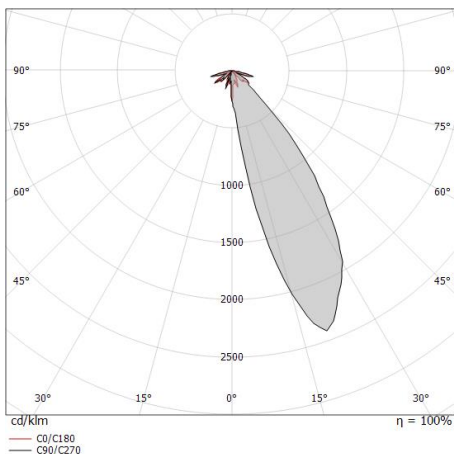
Light Output Ratio (LOR)	4 %
Source lumens	213 lm
Delivered lumens	9 lm
Consumption	1,5 W
Luminaire efficacy	9 lm/W
Colour temperature	4000 K
Standard Deviation of Colour Matching	3 Step MacAdam
Colour rendering index	90 Ra
Standard Operating Ambient Temperature	-20 / +50°C
Ordinary temperature on the glass	40°C

### LED Life / Failure Ratio

L70 B20 C0 214455h (at Tj 60 Ta 25 )

### OPTICAL

C0/C180 optics	154°
Light distribution simmetry	Asymmetrical



Distance [m]	Cone diameter [m]	E(0°) E(C0)	77.2°	90°
0.5	4.40	900	0	0
1.0	8.80	225	0	0
1.5	13.20	150	0	0
2.0	17.61	112.5	0	0
2.5	22.01	81	0	0
3.0	26.41	60	0	0

Distance [m]      Cone diameter [m]      Illuminance [lx]

— C0/C180 (Half-peak divergence: 154.4°)



Quara\_R | Step Lights | Accessories  
**84076N07**



Outer casing

installation position: floor, land; type of installation: masonry L=87mm, H=60mm, D=60mm.

Material:ABS Plastic, colour:black.

**Code**

84918