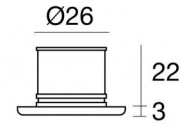
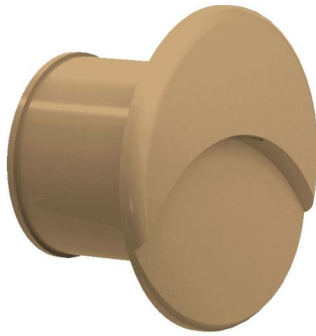


# Envelope\_R



Wall Lights | 1 x powerLED 1 W DC 350 mA | CRI 80  
84072M07



| Technical data                                 |                       |
|--|-----------------------|
| Type   | - - -                 |
| Installation position                          | Wall lights - Ceiling |
| Installation environment                       | Outdoor               |
| Light Source                                   | LED                   |
| Circuit structure                              | powerLED              |
| Optics   | Asymmetric Wallwasher |
| Light emission direction                       | downward              |
| Nominal power                                  | 1 W DC                |
| Source lumens                                  | 145 lm                |
| Input voltage range                            | 350mA                 |
| CCT / Tone                                     | 2700 K                |
| Colour rendering index                         | 80 Ra                 |
| C.C. / C.V.                                    | CC                    |
| Safety class                                   | 3                     |
| IP   | IP66                  |
| IK   | IK10                  |
| Glow wire test                                 | 850°                  |
| Direct mounting on normally flammable surfaces | Yes                   |
| CE   | Yes                   |
| Driver included                                | No                    |
| Dimmable article                               | DALI - 1-10V          |
| Directional                                    | No                    |
| Tilting  | No                    |
| Walk-over                                      | No                    |
| Drive-over                                     | No                    |
| Cable included                                 | Yes                   |
| Cable length                                   | 1 m                   |
| Resin potting                                  | Yes                   |
| Type of light emission                         | Single emission       |
| Net weight                                     | 0.04 Kg               |
| Electrostatic discharge protection             | No                    |
| Surge protection                               | No                    |
| Product technological characteristics          | Acquastop - TVS       |

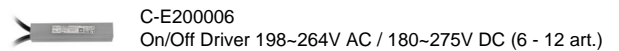
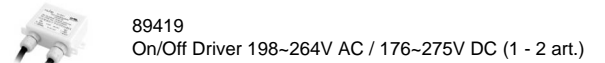
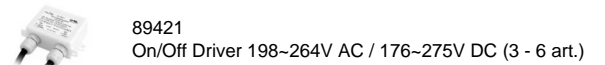
## Finishing casing

|            |              |
|------------|--------------|
| Material   | OT58 brass   |
| Colour     | Raw Brass    |
| Processing | Sandblasting |

## Finishing diffuser

|          |                |
|----------|----------------|
| Material | Silicone resin |
| Colour   | transparent    |

## Electronics





Wall Lights | 1 x powerLED 1 W DC 350 mA | CRI 80 | Base 84072M07

Single emission wall lights for outdoor application. The super warm white LED light source with a asymmetric wallwasher light distribution is composed of 1 powered LEDs with CCT of 2700 K and a CRI 80; the source luminous flux is 145 lm, with a 145.0 lm/W nominal luminous efficacy.

The device body is made of ot58 brass and features a raw brass finish, processed by means of sandblasting; the diffuser is made of silicone resin. The ingress protection degree is IP66; the total weight is of 0.04 kg. The power supply driver is not provided and is to be ordered separately.

The total absorbed power is 1 W. The power supply cable is included and features a 1 m length.

The device features protection class III and can be wall lights or ceiling-mounted, with a 29 mm diameter hole (in plasterboard) with an outer casing, code 84915(for concrete or masonry).

Compliant with the EN 60598-1 standard and its specific provisions.

### Energy efficiency class

This product contains a light source of energy efficiency class D.

### Illuminotechnical Features

|                                       |          |
|---------------------------------------|----------|
| Light Output Ratio (LOR)              | 17 %     |
| Source lumens                         | 145 lm   |
| Delivered lumens                      | 26 lm    |
| Consumption                           | 1,0 W    |
| Luminaire efficacy                    | 26 lm/W  |
| Colour temperature                    | 2700 K   |
| Standard Deviation of Colour Matching | 1.5 Step |
| Colour rendering index                | 80 Ra    |

Standard Operating Ambient Temperature -20 / +50°C

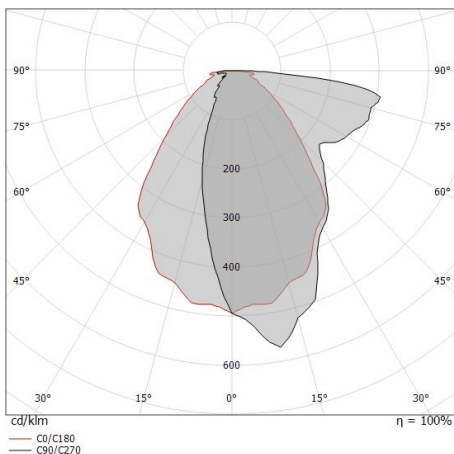
Ordinary temperature on the glass 40°C

### LED Life / Failure Ratio

L70 B10 C0 361980h (at Tj 60 Ta 25 )

### OPTICAL

|                             |              |
|-----------------------------|--------------|
| C0/C180 optics              | 81°          |
| Light distribution simmetry | Asymmetrical |



| Distance [m] | Cone diameter [m] | Illuminance [lx]     |
|--------------|-------------------|----------------------|
| 0.5          | 0.86              | E(0°) 47<br>E(C0) 10 |
| 1.0          | 1.72              | E(0°) 12<br>E(C0) 3  |
| 1.5          | 2.58              | E(0°) 5<br>E(C0) 1   |
| 2.0          | 3.44              | E(0°) 3<br>E(C0) 1   |
| 2.5          | 4.30              | E(0°) 2<br>E(C0) 0   |
| 3.0          | 5.16              | E(0°) 1<br>E(C0) 0   |

Distance [m] Cone diameter [m] Illuminance [lx]  
 — C0/C180 (Half-peak divergence: 81.4°)  
 — C90/C270



Envelope\_R | Step Lights | Accessories  
**84072M07**



Outer casing

installation position: ceiling; type of installation: masonry L=42mm, H=35mm, D=35mm.

Material:ABS Plastic, colour:black.

**Code**

84336



Outer casing

installation position: wall lights; type of installation: masonry L=49mm, H=60mm, D=60mm.

Material:ABS Plastic, colour:black.

**Code**

84915