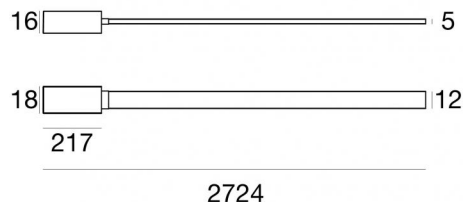


Ink system_L



Systems - Lines | 175 topLED 8 W DC 24 V | CRI 90
83991W00



Technical data	
Designer	Linea Light
Construction year	2020
Type	Cabled - -
Installation position	Cable
Installation environment	Indoor
Light Source	LED
Circuit structure	topLED
Optics	Diffused
Light emission direction	downward
Nominal power	8 W DC
Source lumens	1010 lm
Input voltage range	24 V
Frequency	50-60 Hz
CCT / Tone	3000 K
Colour rendering index	90 Ra
C.C. / C.V.	CV
Safety class	3
IP	IP40
Glow wire test	650°
Direct mounting on normally flammable surfaces	Yes
CE	Yes
Driver included	No
C.V. - C.C. Converter	Converter 24V included
Dimmable article	DALI-2 - P2P
Directional	No
Tilting	No
Walk-over	No
Drive-over	No
Cable included	No
Resin potting	Yes
Type of light emission	Single emission
Net weight	0.996 Kg
Electrostatic discharge protection	No
Surge protection	No

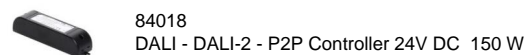
Finishing casing

Material	PU
Colour	white

Finishing mounting frame

Material	PC
Colour	black RAL 9005
Processing	Coating

Electronics





Systems - Lines | 175 topLED 8 W DC 24 V | CRI 90 | Base
83991W00

Single emission systems or lines for indoor application. The warm white LED light source with a diffused light distribution is composed of 175 topped LEDs with CCT of 3000 K and a CRI 90; the source luminous flux is 1010 lm, with a 126.3 lm/W nominal luminous efficacy.

The device body is made of pu and features a white finish; the mounting frame is made of PC, with a black ral 9005 finish, processed by means of coating. The ingress protection degree is IP40; the total weight is of 0.996 kg.

The total absorbed power is 8 W.

The device features protection class III and can be cable-mounted.

Compliant with the EN 60598-1 standard and its specific provisions.

Energy efficiency class

This product contains a light source of energy efficiency class G.

Illuminotechnical Features

Light Output Ratio (LOR)	67 %
Source lumens	1010 lm
Delivered lumens	677 lm
Consumption	8 W
Luminaire efficacy	84 lm/W
Colour temperature	3000 K
Standard Deviation of Colour Matching	3 Step MacAdam
Colour rendering index	90 Ra
Junction temperature (lighting fixture)	80

Standard Operating Ambient Temperature -20 / +50°C

LED Life / Failure Ratio

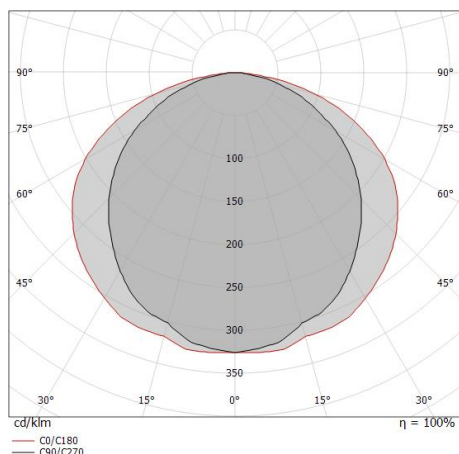
L70 B20 C0 72500h (at Tj 115 Ta 25)

UGR

UGR axial	22.6
UGR transversal	25
X=4H Y=8H	S=0.25H
Reflection factor	70/50/20

OPTICAL

C90/C270 optics	109°
C0/C180 optics	132°
Light distribution simmetry	Symmetrical 2 assis



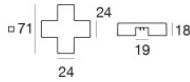
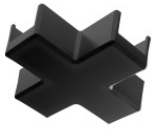
Distance [m]	Cone diameter [m]	illuminance [lx]
0.5	1.41 2.23	E(0°) 881 E(C90) 85 E(C0) 31
1.0	2.82 4.45	E(0°) 220 E(C90) 21 E(C0) 8
1.5	4.24 6.68	E(0°) 98 E(C90) 9 E(C0) 3
2.0	5.65 8.90	E(0°) 55 E(C90) 5 E(C0) 2
2.5	7.06 11.13	E(0°) 35 E(C90) 3 E(C0) 1
3.0	8.47 13.35	E(0°) 24 E(C90) 2 E(C0) 1

Distance [m] Cone diameter [m] illuminance [lx]

— C0/C180 (Half-peak divergence: 131.6°)
— C90/C270 (Half-peak divergence: 109.4°)

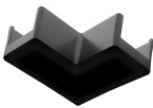


Ink system_L | Lines | Accessories
83991W00



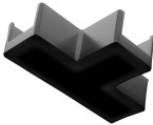
Junction
 Type linear.
 Material:PC, processing:Coating.

Code
81418



Junction - Electrified black L connector
 Type linear.
 Material:PC, processing:Coating.


Code
81419



Junction
 Type linear.
 Material:PC, processing:Coating.

Code
81420

Junction
 Material:Aluminium, processing:Coating.

Finish
 **Code**
83436


Junction

Code
83442

Junction
 Material:Aluminium, processing:Coating.

Finish
 **Code**
83438

Junction
 Material:Aluminium, processing:Coating.

Finish
 **Code**
83440



Cable
 Type of cable power cable; Length 5000 mm; insulation double; section 1.5 mm²; cable gland: no; colors: black - red.

Code
81410



		<p>Cable Type of cable power cable; Length 10000 mm; insulation double; section 1.5 mm²; cable gland: no; colors: black - red.</p>	<p>Code <u>81411</u></p>
		<p>Cable Type of cable power cable; Length 1000 mm; insulation double; section 1.5 mm²; cable gland: no; colors: black - red.</p>	<p>Code <u>84016</u></p>
		<p>Cable Length 1000 mm; colors: black.</p>	<p>Code <u>83445</u></p>
		<p>Cable Length 1000 mm; colors: black.</p>	<p>Code <u>83446</u></p>
		<p>Cables for suspension Material:Aluminium, processing:Coating.</p>	<p>Code <u>81425</u></p>
		<p>Cables for suspension Material:Aluminium, processing:Coating.</p>	<p>Code <u>83426</u></p>
		<p>Cables for suspension Material:Aluminium, processing:Coating.</p>	<p>Code <u>83443</u></p>
		<p>Profile - Kit 5 x Material:Aluminium, colour:5G 9005 Black, processing:Coating.</p>	<p>Code <u>81426</u></p>



Ink system_L | Lines | Accessories
83991W00

		<p>Profile - Kit 2 x Material:Aluminium, colour:5G 9005 Black, processing:Coating.</p>	<p>Code <u>81430</u></p>
		<p>Profile Material:Aluminium, processing:Coating.</p>	<p>Code <u>84010</u></p>
		<p>Profile Material:Aluminium, processing:Coating.</p>	<p>Code <u>84011</u></p>
		<p>Cable cover - 2X Material:Rubber, colour:black.</p>	<p>Code <u>81423</u></p>
		<p>Cable cover - 2X Material:Iron, processing:Coating.</p>	<p>Code <u>81422</u></p>
		<p>Cable cover Material:PC, processing:Coating.</p>	<p>Code <u>81424</u></p>
		<p>Closing cap - Electrified black closing plug Material:PC, processing:Coating.</p>	<p>Code <u>81421</u></p>
		<p>Tool</p>	<p>Code <u>81427</u></p>



Ink system_L | Lines | Accessories
83991W00



Bracket - 2X

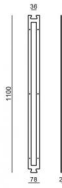
installation position: wall lights, ceiling.
Material:Aluminium, processing:Coating.

Finish



Code

84017



Template

Code

83186

Track

Length: 1000mm.

Material:Aluminium, processing:Coating.

Finish



Code

83432

Track

Length: 2000mm.

Material:Aluminium, processing:Coating.

Finish



Code

83434