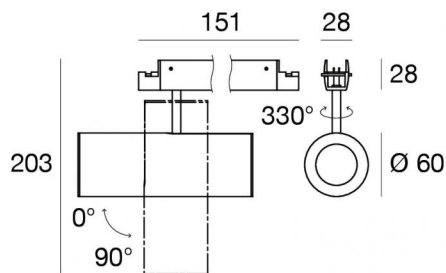


Ink system_SP



Systems - Lines | 1 arrayLED 22 W DC 24 V | CRI 90
83959W35



Technical data	
Designer	Linea Light
Construction year	2020
Type	Cabled - -
Installation position	Cable
Installation environment	Indoor
Light Source	LED
Circuit structure	arrayLED
Optics	Medium Flood
Light emission direction	downward
Nominal power	22 W DC
Source lumens	2534 lm
Input voltage range	24 V
Frequency	50-60 Hz
CCT / Tone	3000 K
Colour rendering index	90 Ra
C.C. / C.V.	CV
Safety class	3
IP	IP40
Glow wire test	650°
Direct mounting on normally flammable surfaces	Yes
CE	Yes
Driver included	No
C.V. - C.C. Converter	Converter 24V included
Dimmable article	DALI - 1-10V - PUSH DIM
Directional	Swivelling
total angle (vertical plane)	330 °
Tilting	Yes
total angle (horizontal plane)	90 °
Walk-over	No
Drive-over	No
Cable included	No
Resin potting	No
Type of light emission	Single emission
Net weight	0.825 Kg
Electrostatic discharge protection	No
Surge protection	No
Optics technology	Honey comb

Finishing casing

Material	Aluminium
Colour	5G 9005 Black
Processing	Coating

Finishing diffuser

Material	PMMA
Colour	transparent


Finishing mounting frame

Material	Aluminium
Colour	5G 9005 Black
Processing	Coating

Electronics

 81416
On/Off Driver 220-240V AC 120 W

 81417
On/Off Driver 220-240V AC 180 W

 83042
1-10V - Push and Simply Dim - DALI-2 Controller



Systems - Lines | 1 arrayLED 22 W DC 24 V | CRI 90 | Base 83959W35

Single emission systems or lines for indoor application. The warm white LED light source with a medium flood light distribution is composed of 1 topped LEDs with CCT of 3000 K and a CRI 90; the source luminous flux is 2534 lm, with a 115.2 lm/W nominal luminous efficacy.

The device body is made of aluminium and features a 5g 9005 black finish, processed by means of coating; the diffuser is made of pmma; the mounting frame is made of aluminium, with a 5g 9005 black finish, processed by means of coating. The ingress protection degree is IP40; the total weight is of 0.825 kg.

The total absorbed power is 22 W.

The device features protection class III and can be cable-mounted.

Compliant with the EN 60598-1 standard and its specific provisions.

Energy efficiency class

This product contains a light source of energy efficiency class F.

Illuminotechnical Features

Light Output Ratio (LOR)	78 %
Source lumens	2534 lm
Delivered lumens	1977 lm
Consumption	22 W
Luminaire efficacy	89 lm/W
Colour temperature	3000 K
Standard Deviation of Colour Matching	3 Step MacAdam
Colour rendering index	90 Ra
Junction temperature (lighting fixture)	80
Standard Operating Ambient Temperature	-20 / +50°C

LED Life / Failure Ratio

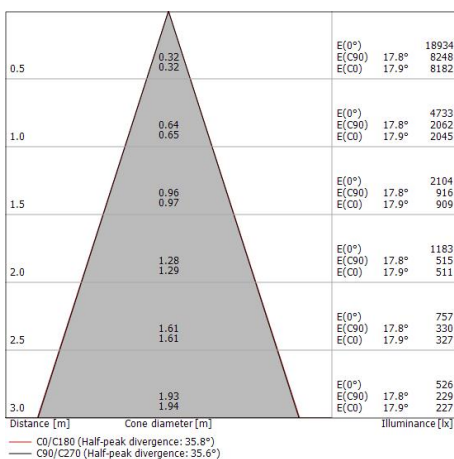
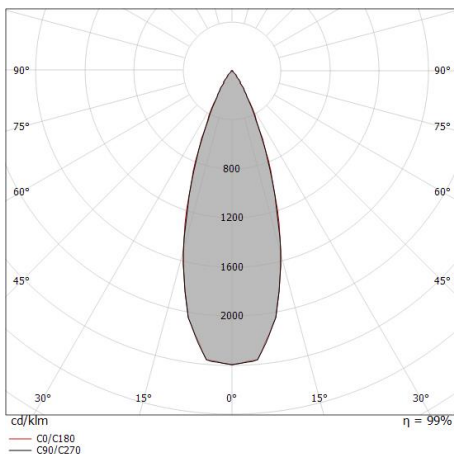
L80 B20 C0 80000h

UGR

UGR axial	17.3
UGR transversal	17.4
X=4H Y=8H	S=0.25H
Reflection factor	70/50/20

OPTICAL

C0/C180 optics	36°
Light distribution simmetry	Symmetrical

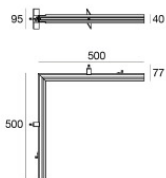




		<p>Tool Material:steel, colour:steel.</p>	<p>Code <u>81427</u></p>
		<p>Cable Type of cable power cable; Length 1000 mm; insulation double; section 1.5 mm²; cable gland: no; colors: black - red.</p>	<p>Code <u>84016</u></p>
		<p>Cable Type of cable power cable; Length 5000 mm; insulation double; section 1.5 mm²; cable gland: no; colors: black - red.</p>	<p>Code <u>81410</u></p>
		<p>Cable Type of cable power cable; Length 10000 mm; insulation double; section 1.5 mm²; cable gland: no; colors: black - red.</p>	<p>Code <u>81411</u></p>
		<p>Profile - L. 1000mm Material:Aluminium, processing:Coating.</p>	<p>Code <u>84012</u></p>
		<p>Profile - L. 2000mm Material:Aluminium, processing:Coating.</p>	<p>Code <u>84013</u></p>
		<p>Profile - L. 3000mm Material:Aluminium, processing:Coating.</p>	<p>Code <u>84014</u></p>
		<p>Profile - Recessed corner Material:Aluminium, processing:Coating.</p>	<p>Code <u>84015</u></p>

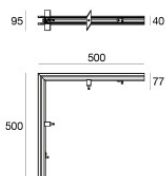


Ink system_SP | Lines | Accessories
83959W35



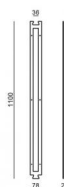
Profile - Recessed corner - IN
Material:Aluminium, processing:Coating.

Code
84073



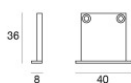
Profile - Recessed corner - OUT
Material:Aluminium, processing:Coating.

Code
84074



Template
Material:Iron, colour:5G 9005 Black, processing:Coating.

Code
83186



Closing cap - 2X
Material:PC, colour:black.

Code
83153