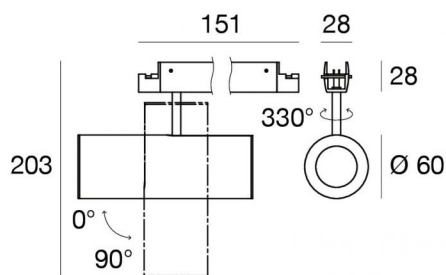


# Ink system\_SP



Systems - Lines | 1 arrayLED 22 W DC 24 V | CRI 90  
83959W20



Technical data	
Designer	Linea Light
Construction year	2020
Type	Cabled - -
Installation position	Cable
Installation environment	Indoor
Light Source	LED
Circuit structure	arrayLED
Optics	Flood
Light emission direction	downward
Nominal power	22 W DC
Source lumens	2534 lm
Input voltage range	24 V
Frequency	50-60 Hz
CCT / Tone	3000 K
Colour rendering index	90 Ra
C.C. / C.V.	CV
Safety class	3
IP	IP40
Glow wire test	650°
Direct mounting on normally flammable surfaces	Yes
CE	Yes
Driver included	No
C.V. - C.C. Converter	Converter 24V included
Dimmable article	DALI - 1-10V - PUSH DIM
Directional	Swivelling
total angle (vertical plane)	330 °
Tilting	Yes
total angle (horizontal plane)	90 °
Walk-over	No
Drive-over	No
Cable included	No
Resin potting	No
Type of light emission	Single emission
Net weight	0.825 Kg
Electrostatic discharge protection	No
Surge protection	No
Optics technology	Honey comb

## Finishing casing

Material	Aluminium
Colour	5G 9005 Black
Processing	Coating


## Finishing diffuser

Material	PMMA
Colour	transparent

## Finishing mounting frame

Material	Aluminium
Colour	5G 9005 Black
Processing	Coating

## Electronics

 81416  
On/Off Driver 220-240V AC 120 W (- art.)

 81417  
On/Off Driver 220-240V AC 180 W (- art.)

 83042  
1-10V - Push and Simply Dim - DALI-2 Controller (- art.)



Systems - Lines | 1 arrayLED 22 W DC 24 V | CRI 90 | Base  
**83959W20**

Single emission systems or lines for indoor application. The warm white LED light source with a flood light distribution is composed of 1 topped LEDs with CCT of 3000 K and a CRI 90; the source luminous flux is 2534 lm, with a 115.2 lm/W nominal luminous efficacy.

The device body is made of aluminium and features a 5g 9005 black finish, processed by means of coating; the diffuser is made of pmma; the mounting frame is made of aluminium, with a 5g 9005 black finish, processed by means of coating. The ingress protection degree is IP40; the total weight is of 0.825 kg.

The total absorbed power is 22 W.

The device features protection class III and can be cable-mounted.

Compliant with the EN 60598-1 standard and its specific provisions.

### Energy efficiency class

This product contains a light source of energy efficiency class F.

### Illuminotechnical Features

Light Output Ratio (LOR)	81 %
Source lumens	2534 lm
Delivered lumens	2062 lm
Consumption	22 W
Luminaire efficacy	93 lm/W
Colour temperature	3000 K
Standard Deviation of Colour Matching	3 Step MacAdam
Colour rendering index	90 Ra
Junction temperature (lighting fixture)	80

Standard Operating Ambient Temperature -20 / +50°C

### LED Life / Failure Ratio

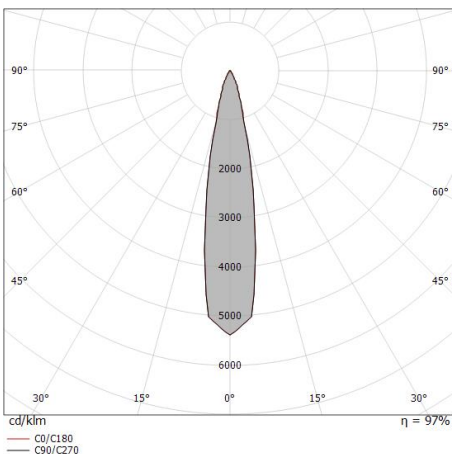
L80 B20 C0 80000h

### UGR

UGR axial	15
UGR transversal	15
X=4H   Y=8H	S=0.25H
Reflection factor	70/50/20

### OPTICAL

C0/C180 optics	21°
Light distribution simmetry	Symmetrical



Distance [m]	Cone diameter [m]	illuminance [lx]
0.5	0.18	E(0°) 44369 E(C0) 21341
1.0	0.36	E(0°) 11092 E(C0) 5335
1.5	0.55	E(0°) 4930 E(C0) 2371
2.0	0.73	E(0°) 2773 E(C0) 1334
2.5	0.91	E(0°) 1775 E(C0) 854
3.0	1.09	E(0°) 1232 E(C0) 593

Distance [m] Cone diameter [m] Illuminance [lx]  
 — C0/C180 (Half-peak divergence: 20.6°)

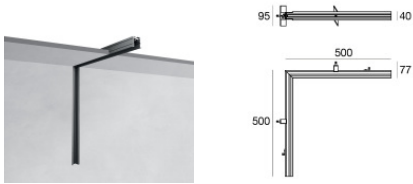


Ink system\_SP | Lines | Accessories  
**83959W20**

		<p>Tool</p>	<p><b>Code</b>  <u>81427</u></p>
		<p>Cable                  Type of cable power cable; Length 1000 mm; insulation double; section 1.5 mm<sup>2</sup>; cable gland: no; colors: black - red.</p>	<p><b>Code</b>  <u>84016</u></p>
		<p>Cable                  Type of cable power cable; Length 5000 mm; insulation double; section 1.5 mm<sup>2</sup>; cable gland: no; colors: black - red.</p>	<p><b>Code</b>  <u>81410</u></p>
		<p>Cable                  Type of cable power cable; Length 10000 mm; insulation double; section 1.5 mm<sup>2</sup>; cable gland: no; colors: black - red.</p>	<p><b>Code</b>  <u>81411</u></p>
		<p>Profile - L. 1000mm                  Material:Aluminium, processing:Coating.</p>	<p><b>Code</b>  <u>84012</u></p>
		<p>Profile - L. 2000mm                  Material:Aluminium, processing:Coating.</p>	<p><b>Code</b>  <u>84013</u></p>
		<p>Profile - L. 3000mm                  Material:Aluminium, processing:Coating.</p>	<p><b>Code</b>  <u>84014</u></p>
		<p>Profile - Recessed corner                  Material:Aluminium, processing:Coating.</p>	<p><b>Code</b>  <u>84015</u></p>

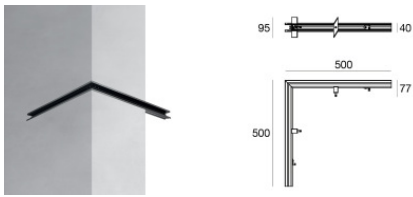


Ink system\_SP | Lines | Accessories  
**83959W20**



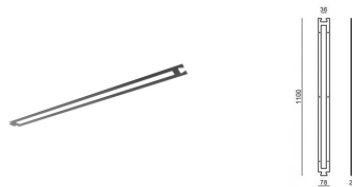
Profile - Recessed corner - IN  
Material:Aluminium, processing:Coating.

**Code**  
84073



Profile - Recessed corner - OUT  
Material:Aluminium, processing:Coating.

**Code**  
84074



Template

**Code**  
83186



Closing cap - 2X  
Material:PC, colour:black.

**Code**  
83153