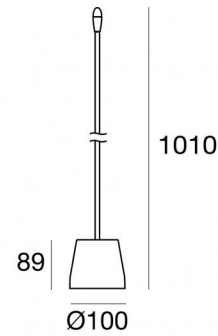




Bollard & Pole | 180-264 V AC /230-280 V DC
1 x powerLEDs 1.5 W DC - 1.8 W AC | CRI 90
83876N00



Technical data	
Type	Bollard
Installation position	Floor
Installation environment	Outdoor
Light Source	LED
Circuit structure	powerLEDs
Optics	Diffused
Light emission direction	frontal
Nominal power	1.5 W DC
Total Power	1.8 W
Source lumens	203 lm
Nominal input voltage	220 - 240 V AC
Input voltage range	180 - 264 V AC
Frequency	50 - 60 Hz
CCT / Tone	4000 K
Colour rendering index	90 Ra
C.C. / C.V.	AC
Safety class	2
IP	IP65
IK	IK08
Glow wire test	650°
Direct mounting on normally flammable surfaces	Yes
CE	Yes
Driver included	Driver
Dimmable article	No
Directional	Swivelling by means of flexible tube
Tilting	No
Walk-over	No
Drive-over	No
Cable included	No
Resin potting	Yes
Type of light emission	Single emission
Net weight	0.35 Kg
Electrostatic discharge protection	Yes
Surge protection	1 KV

Finishing casing

Colour	brown
--------	-------

Finishing diffuser

Material	UV Resistant Polymethylmethacrylate
Colour	opaline
Processing	Sandblasting

Finishing base

Material	ABS Plastic
Colour	brown
Processing	Coating

The driver contained in the device complies with IEC 61347-2-13 annex J, and can therefore be powered by centralized power systems.

Bollard & Pole | 180-264 V AC /230-280 V DC | 1 x powerLEDs 1.5 W DC - 1.8 W AC | CRI 90 | Base
83876N00

Single emission bollard & pole for outdoor application. The natural white LED light source with a diffused light distribution is composed of 1 powered LEDs with CCT of 4000 K and a CRI 90; the source luminous flux is 203 lm, with a 135.3 lm/W nominal luminous efficacy.

The device body and features a brown finish; the diffuser is made of uv resistant polymethylmethacrylate with a sandblasting treatment. The ingress protection degree is IP65; the total weight is of 0.35 kg.

The total absorbed power is 1.8 W.

The device features protection class II and can be floor-mounted.

Compliant with the EN 60598-1 standard and its specific provisions.

Energy efficiency class

This product contains a light source of energy efficiency class E.

Illuminotechnical Features

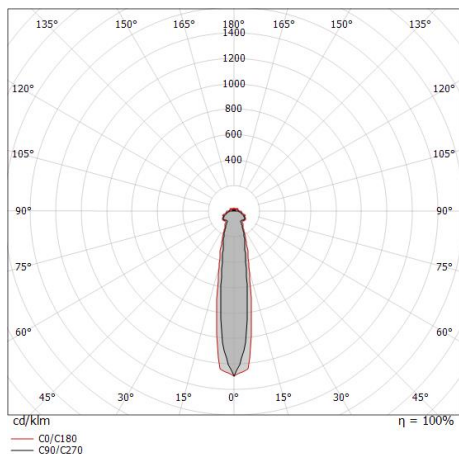
Light Output Ratio (LOR)	33 %
Source lumens	203 lm
Delivered lumens	69 lm
Consumption	1.8 W
Luminaire efficacy	38 lm/W
Colour temperature	4000 K
Standard Deviation of Colour Matching	3 Step MacAdam
Colour rendering index	90 Ra
Standard Operating Ambient Temperature	-20 / +50°C

LED Life / Failure Ratio

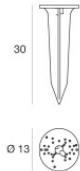
L70 B20 C0 214455h (at Tj 60 Ta 25)

OPTICAL

C90/C270 optics	19°
C0/C180 optics	23°
Light distribution symmetry	Symmetrical 2 axis



Blum | Bollard & Pole | Accessories
83876N00



Picket
installation position: land,Cover material: pc

Code

14931