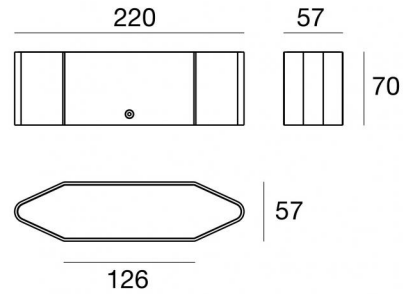




Downlights - Uplights - Lines

220-240 V AC /176-240 V DC | 5 x powerLED 16.2 W DC - 21 W AC | CRI 80

83866N15



## Technical data

Type	-- Encasement without flange - Walk Over - - - Surface
Installation position	Wall lights - Ceiling - Floor
Installation environment	Outdoor
Light Source	LED
Circuit structure	powerLED
Optics	Spot
Light emission direction	upward
Nominal power	16.2 W DC
Total Power	21 W
Source lumens	2177 lm
Nominal input voltage	220 - 240 V AC
Input voltage range	220 - 240 V AC
Frequency	50 - 60 Hz
CCT / Tone	4000 K
Colour rendering index	80 Ra
C.C. / C.V.	AC
Safety class	2
IP	IP67
IK	IK08
Glow wire test	850°
Direct mounting on normally flammable surfaces	No
CE	Yes
Driver included	Driver
Dimmable article	No
Directional	No
Tilting	No
Walk-over	Yes
Drive-over	No
Cable included	Yes
Cable length	0.5 m
Resin potting	Yes
Type of light emission	Single emission
Net weight	1.6 Kg
Electrostatic discharge protection	Yes
Surge protection	2 KV
Product technological characteristics	Acquastop - TCS

## Finishing casing

Material	Aluminium 6060
Colour	Black
Processing	Open pore anodizing + Powder Coating

## Finishing diffuser

Material	UV Resistant Polycarbonate - Extra clear glass
Colour	black - transparent
Processing	Silk-screening

## Finishing bracket

Material	AISI 316 steel
Colour	steel



Downlights - Uplights - Lines | 220-240 V AC /176-240 V DC | 5 x powerLED 16.2 W DC - 21 W AC | CRI 80 | Base 83866N15

### Energy efficiency class

This product contains 5 light sources of energy efficiency class E.

### Illuminotechnical Features

Light Output Ratio (LOR)	54 %
Source lumens	2177 lm
Delivered lumens	1188 lm
Consumption	21 W
Luminaire efficacy	56 lm/W
Colour temperature	4000 K
Standard Deviation of Colour Matching	3 Step MacAdam
Colour rendering index	80 Ra
Standard Operating Ambient Temperature	-20 / +50°C
Ordinary temperature on the glass	50°C

### LED Life / Failure Ratio

L70 B10 C0 247450h (at Tj 60 Ta 25 )

### UGR

UGR axial	6.8
UGR transversal	6.7
X=4H   Y=8H	S=0.25H
Reflection factor	70/50/20

### OPTICAL

C0/C180 optics	14°
Light distribution simmetry	Symmetrical

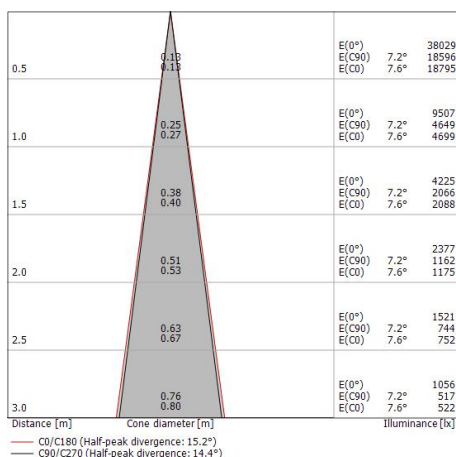
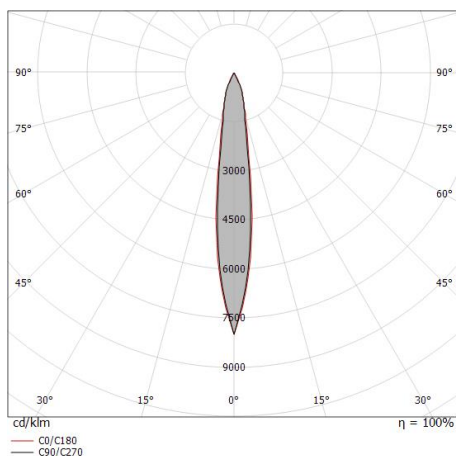
Single emission recessed downlights, recessed downlights, uplights, lines or lines for outdoor application. The natural white LED light source with a spot light distribution is composed of 5 powered LEDs with CCT of 4000 K and a CRI 80; the source luminous flux is 2177 lm, with a 134.4 lm/W nominal luminous efficacy.

The device body is made of aluminium 6060 and features a black finish, processed by means of open pore anodizing + powder coating; the diffuser is made of extra clear glass with a silk-screening treatment; the diffuser is made of uv resistant polycarbonate. The ingress protection degree is IP67; the total weight is of 1.6 kg.

The total absorbed power is 21 W. The power supply cable is included and features a 0.5 m length.

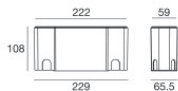
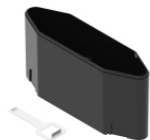
The device features protection class II and can be wall lights, ceiling or floor-mounted with an outer casing, code 83124(for concrete or masonry).

Compliant with the EN 60598-1 standard and its specific provisions.





Skin\_F | Lines | Accessories  
**83866N15**



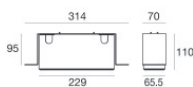
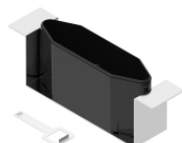
Outer casing - Extraction key included

Type of installation: masonry L=222mm, H=108mm, D=65.5mm.

Material:ABS Plastic, colour:black.

**Code**

83124



Outer casing - Installation in downlight version - Extraction key included

installation position: ceiling; type of installation: masonry L=314mm, H=95mm, D=70mm

**Code**

83126