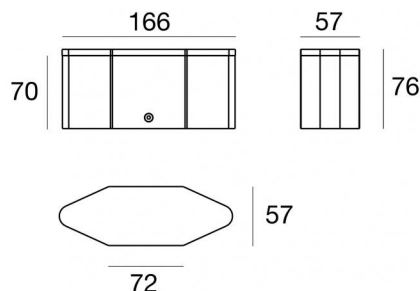




Ceiling Downlights - Downlights

220-240 V AC /176-276 V DC | 3 x powerLED 6 W DC - 6.7 W AC | CRI 80

83864M30



Technical data

Type	Surface - - - Encasement without flange
Installation position	Wall lights - Ceiling
Installation environment	Outdoor
Light Source	LED
Circuit structure	powerLED
Optics	Medium Flood
Light emission direction	upward
Nominal power	6 W DC
Total Power	6.7 W
Source lumens	798 lm
Nominal input voltage	220 - 240 V AC
Input voltage range	220 - 240 V AC
CCT / Tone	2700 K
Colour rendering index	80 Ra
C.C. / C.V.	AC
Safety class	2
IP	IP67
IK	IK10
Glow wire test	850°
Direct mounting on normally flammable surfaces	No
CE	Yes
Driver included	Driver
Dimmable article	No
Directional	No
Tilting	No
Walk-over	Yes
Drive-over	No
Cable included	Yes
Cable length	0.5 m
Resin potting	Yes
Type of light emission	Single emission
Net weight	1.4 Kg
Electrostatic discharge protection	Yes
Surge protection	Yes
Product technological characteristics	Acquastop - TCS

Finishing casing

Material	Aluminium 6060
Colour	Black
Processing	Open pore anodizing + Powder Coating

Finishing diffuser

Material	Extra clear glass - Tempered - UV Resistant Polycarbonate
Colour	Opal white - black
Processing	Sandblasting

Finishing bracket

Material	AISI 316 steel
Colour	steel



Ceiling Downlights - Downlights | 220-240 V AC /176-276 V DC | 3 x powerLED 6 W DC -
6.7 W AC | CRI 80 | Base
83864M30

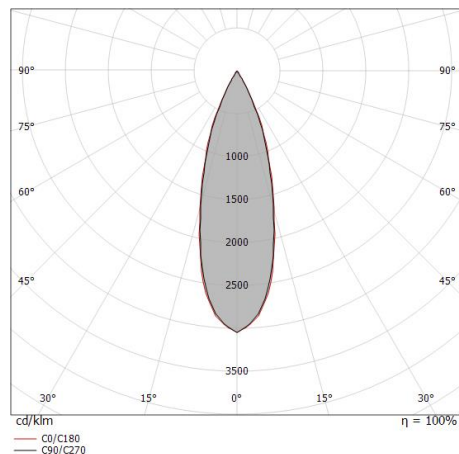
Single emission ceiling downlights, recessed downlights or recessed downlights for outdoor application. The super warm white LED light source with a medium flood light distribution is composed of 3 powered LEDs with CCT of 2700 K and a CRI 80; the source luminous flux is 798 lm, with a 133.0 lm/W nominal luminous efficacy.

The device body is made of aluminium 6060 and features a black finish, processed by means of open pore anodizing + powder coating; the diffuser is made of uv resistant polycarbonate; the diffuser is made of extra clear glass - tempered with a sandblasting treatment. The ingress protection degree is IP67; the total weight is of 1.4 kg.

The total absorbed power is 6.7 W. The power supply cable is included and features a 0.5 m length.

The device features protection class II and can be wall lights or ceiling-mounted with an outer casing, code 83123(for concrete or masonry).

Compliant with the EN 60598-1 standard and its specific provisions.



Distance [m]	Cone diameter [m]	illuminance [lx]
0.5	0.28 0.29	E(0°) 6680 E(C90) 2988 E(C0) 2984
1.0	0.56 0.57	E(0°) 1670 E(C90) 747 E(C0) 746
1.5	0.84 0.86	E(0°) 742 E(C90) 332 E(C0) 332
2.0	1.12 1.15	E(0°) 417 E(C90) 187 E(C0) 186
2.5	1.41 1.43	E(0°) 267 E(C90) 120 E(C0) 119
3.0	1.69 1.72	E(0°) 186 E(C90) 83 E(C0) 83

— C0/C180 (Half-peak divergence: 32.0°)
— C90/C270 (Half-peak divergence: 31.4°)

Energy efficiency class

This product contains 3 light sources of energy efficiency class E.

Illuminotechnical Features

Light Output Ratio (LOR)	68 %
Source lumens	798 lm
Delivered lumens	548 lm
Consumption	6.7 W
Luminaire efficacy	81 lm/W
Colour temperature	2700 K
Standard Deviation of Colour Matching	3 Step MacAdam
Colour rendering index	80 Ra
Black Body Locus	On
Standard Operating Ambient Temperature	-20 / +50°C
Ordinary temperature on the glass	50°C

LED Life / Failure Ratio

L70 B10 C0 247450h (at Tj 60 Ta 25)

UGR

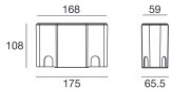
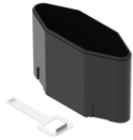
UGR axial	6.4
UGR transversal	6.9
X=4H Y=8H	S=0.25H
Reflection factor	70/50/20

OPTICAL

C0/C180 optics	31°
Light distribution simmetry	Symmetrical

COLOR VECTOR GRAPHIC





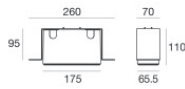
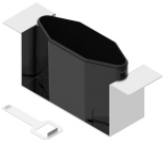
Outer casing - Extraction key included

Type of installation: masonry L=168mm, H=108mm, D=65.5mm.

Material:ABS Plastic, colour:black.

Code

83123



Outer casing - Installation in downlight version - Extraction key included

installation position: ceiling; type of installation: masonry L=260mm, H=95mm, D=70mm

Code

83125