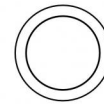




Uplights | 4 x powerLED 9 W DC 24 V | CRI 80
83643N18



Ø85

Technical data	
Type	Walk Over - -
Installation position	Floor
Installation environment	Outdoor
Light Source	LED
Circuit structure	powerLED
Optics	Elliptic Narrow Spot (Wall Grazing)
Light emission direction	upward
Nominal power	9 W DC
Source lumens	922 lm
Input voltage range	24 V
CCT / Tone	4000 K
Colour rendering index	80 Ra
C.C. / C.V.	CV
Safety class	3
IP	IP68
Installation limitations	Not for underwater use
IK	IK10
Glow wire test	850°
Direct mounting on normally flammable surfaces	Yes
CE	Yes
Driver included	No
C.V. - C.C. Converter	Converter 24V included
Dimmable article	No
Directional	No
Tilting	No
Walk-over	Yes
Drive-over	No
Cable included	Yes
Cable length	1 m
Resin potting	Yes
Type of light emission	Single emission
Net weight	0.5 Kg
Electrostatic discharge protection	No
Surge protection	No
Product technological characteristics	Acquastop

Finishing casing

Material	Die-cast Aluminium EN AB - 46100
Colour	black
Processing	Open pore anodizing + Powder Coating

Finishing diffuser

Material	Extra clear glass - Tempered
Colour	transparent
Processing	Silk-screening

Finishing flange

Material	AISI 316L steel
Colour	steel
Processing	Brushing

Electronics



89179
On/Off Driver 198~264V AC 24 W (1 - 2 art.)



89359
On/Off Driver 198~264V AC / 180~275V DC 48 W (1 - 5 art.)



99331
On/Off Driver 198~264V AC / 176~275V DC 150 W (1 - 16 art.)



99660
DALI - 1-10V Controller 24V DC 216 W (- art.)



99786
On/Off Driver 180~295V AC / 255~417V DC 240 W (- art.)



C-E500023
DALI - 1-10V - Push and Simply Dim Controller 8~53V DC 576 W (- art.)

Cables Electrification

Cable connector	No
-----------------	----



Uplights | 4 x powerLED 9 W DC 24 V | CRI 80 | Base 83643N18

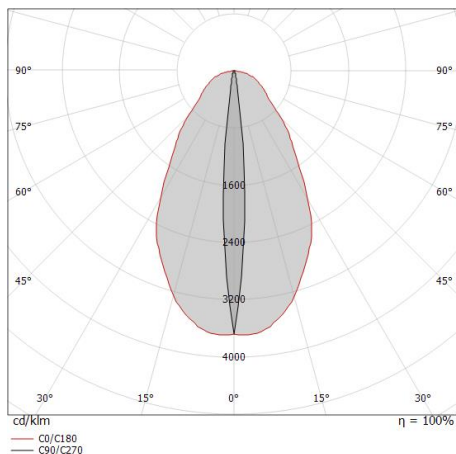
Single emission uplights for outdoor application. The natural white LED light source with a elliptic narrow spot (wall grazing) light distribution is composed of 4 powerleds LEDs with CCT of 4000 K and a CRI 80; the source luminous flux is 922 lm, with a 102.4 lm/W nominal luminous efficacy.

The device body is made of die-cast aluminium en ab - 46100 and features a black finish, processed by means of open pore anodizing + powder coating; the diffuser is made of extra clear glass - tempered with a silk-screening treatment. The ingress protection degree is IP68; the total weight is of 0.5 kg.

The total absorbed power is 9 W. The power supply cable is included and features a 1 m length.

The device features protection class III and can be floor-mounted with an outer casing, code 99856(for concrete or masonry).

Compliant with the EN 60598-1 standard and its specific provisions.



Distance [m]	Cone diameter [m]	illuminance [lx]
0.5	0.08 0.62	E(0°) 3462 E(C90) 1744 E(C0) 1065
1.0	0.16 1.24	E(0°) 866 E(C90) 436 E(C0) 266
1.5	0.24 1.87	E(0°) 385 E(C90) 194 E(C0) 118
2.0	0.32 2.49	E(0°) 216 E(C90) 109 E(C0) 67
2.5	0.40 3.11	E(0°) 138 E(C90) 70 E(C0) 43
3.0	0.48 3.73	E(0°) 96 E(C90) 48 E(C0) 30

— C0/C180 (Half-peak divergence: 63.8°)
— C90/C270 (Half-peak divergence: 9.2°)

Energy efficiency class

This product contains a light source of energy efficiency class E.

Illuminotechnical Features

Light Output Ratio (LOR)	25 %
Source lumens	922 lm
Delivered lumens	235 lm
Consumption	9 W
Luminaire efficacy	26 lm/W
Colour temperature	4000 K
Standard Deviation of Colour Matching	3 Step MacAdam
Colour rendering index	80 Ra

Standard Operating Ambient Temperature -20 / +50°C

Ordinary temperature on the glass 40°C

LED Life / Failure Ratio

L70 B10 C0 60500h

UGR

UGR axial	12.2
UGR transversal	29.1
X=4H Y=8H	S=0.25H
Reflection factor	70/50/20

OPTICAL

C90/C270 optics	9°
C0/C180 optics	64°
Light distribution simmetry	Symmetrical 2 assis



Orma_AB | Effects | Accessories
83643N18



Outer casing

installation position: floor, land; type of installation: masonry L=114mm, H=78mm, D=114mm.

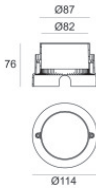
Material:AISI 316 steel, colour:steel.

Finish



Code

99563



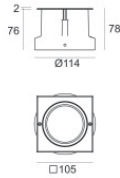
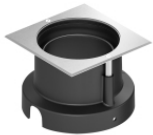
Outer casing

installation position: floor, land; type of installation: masonry L=114mm, H=76mm, D=114mm.

Material:ABS Plastic, colour:black.

Code

99651



Outer casing

installation position: floor, land; type of installation: masonry L=105mm, H=76mm, D=105mm.

Material:ABS Plastic, colour:black.

Code

99856