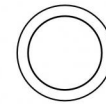




Uplights | x powerLED 0 W DC 630 mA | CRI 80  
83642M18



Ø85

Technical data	
Type	Walk Over - -
Installation position	Floor
Installation environment	Outdoor
Light Source	LED
Circuit structure	powerLED
Optics	Elliptic Narrow Spot (Wall Grazing)
Light emission direction	upward
Nominal power	0 W DC
Input voltage range	630mA
CCT / Tone	2700 K
Colour rendering index	80 Ra
C.C. / C.V.	CC
Safety class	3
IP	IP68
Installation limitations	Not for underwater use
IK	IK10
Glow wire test	850°
Direct mounting on normally flammable surfaces	Yes
CE	Yes
Driver included	No
Dimmable article	DALI - 1-10V
Directional	No
Tilting	No
Walk-over	Yes
Drive-over	No
Cable included	Yes
Cable length	1 m
Resin potting	Yes
Type of light emission	Single emission
Net weight	0.5 Kg
Electrostatic discharge protection	No
Surge protection	No
Product technological characteristics	Acquastop

#### Finishing casing

Material	Die-cast Aluminium EN AB - 46100
Colour	black
Processing	Open pore anodizing + Powder Coating

#### Finishing diffuser

Material	Extra clear glass - Tempered
Colour	transparent
Processing	Silk-screening

#### Finishing flange

Material	AISI 316L steel
Colour	steel
Processing	Brushing

#### Cables Electrification

Cable connector	No
-----------------	----

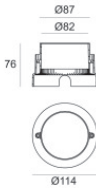


Orma\_AB | Effects | Accessories  
**83642M18**



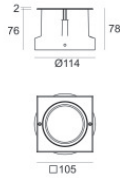
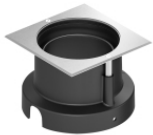
Outer casing  
 installation position: floor, land; type of installation: masonry L=114mm, H=78mm,  
 D=114mm.  
 Material:AISI 316 steel, colour:steel.

Finish	Code
	99563



Outer casing  
 installation position: floor, land; type of installation: masonry L=114mm, H=76mm,  
 D=114mm.  
 Material:ABS Plastic, colour:black.

Code
99651



Outer casing  
 installation position: floor, land; type of installation: masonry L=105mm, H=76mm,  
 D=105mm.  
 Material:ABS Plastic, colour:black.

Code
99856