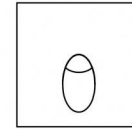
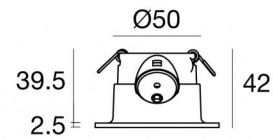




198-264 V AC /186-275 V DC  
 1 x powerLED 2 W DC - 2.7 W AC | CRI 80  
**83585M70**



□70

Technical data	
Installation position	Wall lights
Installation environment	Outdoor
Light Source	LED
Circuit structure	powerLED
Optics	Asymmetric Wallwasher
Light emission direction	downward
Nominal power	2 W DC
Total Power	2.7 W
Source lumens	233 lm
Nominal input voltage	220 - 240 V AC
Input voltage range	198 - 264 V AC
Frequency	50 - 60 Hz
CCT / Tone	2700 K
Colour rendering index	80 Ra
C.C. / C.V.	AC
Safety class	2
IP	IP65
Glow wire test	850°
Direct mounting on normally flammable surfaces	Yes
CE	Yes
Driver included	Driver
Dimmable article	No
Directional	No
Tilting	No
Walk-over	No
Drive-over	No
Cable included	Yes
Cable length	1 m
Resin potting	Yes
Type of light emission	Single emission
Net weight	0.2 Kg
Electrostatic discharge protection	Yes
Surge protection	1 KV

Finishing casing	
Material	Aluminium
Colour	Dark brown
Processing	Coating

198-264 V AC /186-275 V DC | 1 x powerLED 2 W DC - 2.7 W AC | CRI 80 | Base  
**83585M70**

Single emission for outdoor application. The super warm white LED light source with a asymmetric wallwasher light distribution is composed of 1 powered LEDs with CCT of 2700 K and a CRI 80; the source luminous flux is 233 lm, with a 116.5 lm/W nominal luminous efficacy.

The device body is made of aluminium and features a dark brown finish, processed by means of coating. The ingress protection degree is IP65; the total weight is of 0.2 kg.

The total absorbed power is 2.7 W. The power supply cable is included and features a 1 m length.

The device features protection class II and can be wall lights-mounted, with a 52 mm diameter hole (in plasterboard) with an outer casing, code 84338(for concrete or masonry).

Compliant with the EN 60598-1 standard and its specific provisions.

### Energy efficiency class

This product contains a light source of energy efficiency class D.

### Illuminotechnical Features

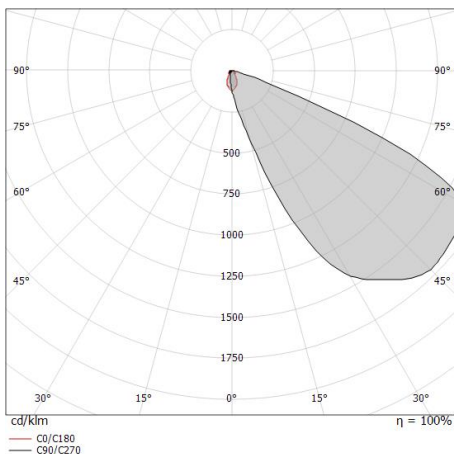
Light Output Ratio (LOR)	29 %
Source lumens	233 lm
Delivered lumens	68 lm
Consumption	2.7 W
Luminaire efficacy	25 lm/W
Colour temperature	2700 K
Standard Deviation of Colour Matching	1.5 Step
Colour rendering index	80 Ra
Standard Operating Ambient Temperature	-20 / +50°C
Ordinary temperature on the glass	40°C

### LED Life / Failure Ratio

L70 B10 C0 361980h (at Tj 60 Ta 25 )

### OPTICAL

C0/C180 optics	53°
Light distribution symmetry	Asymmetrical



Distance [m]	Cone diameter [m]	Illuminance [lx]
0.5	0.50	E(0°) 32 E(C0) 12
1.0	1.01	E(0°) 8 E(C0) 3
1.5	1.51	E(0°) 4 E(C0) 1
2.0	2.01	E(0°) 2 E(C0) 1
2.5	2.51	E(0°) 1 E(C0) 0
3.0	3.02	E(0°) 1 E(C0) 0

— C0/C180 (Half-peak divergence: 53.4°)



Quara\_Q | Step Lights | Accessories  
**83585M70**



Outer casing

installation position: wall lights; type of installation: masonry L=72mm, H=62mm, D=62mm.

Material:ABS Plastic, colour:black.

**Code**

84338