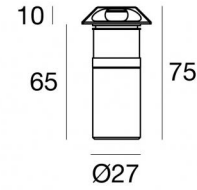


# Alcor\_Q4 316



Uplights | 198-264 V AC /186-275 V DC  
 1 x powerLED 1.6 W DC - 3 W AC | CRI 80  
**83564M18**



Technical data	
Type	Semi-recessed - -
Installation position	Floor
Installation environment	Outdoor
Light Source	LED
Circuit structure	powerLED
Optics	Radial Bi-directional emission
Light emission direction	external
Nominal power	1.6 W DC
Total Power	3 W
Source lumens	233 lm
Nominal input voltage	220 - 240 V AC
Input voltage range	198 - 264 V AC
Frequency	50 - 60 Hz
CCT / Tone	2700 K
Colour rendering index	80 Ra
C.C. / C.V.	AC
Safety class	2
IP	IP67
IK	IK10
Glow wire test	850°
Direct mounting on normally flammable surfaces	Yes
CE	Yes
Driver included	Driver
Dimmable article	No
Directional	No
Tilting	No
Walk-over	Yes
Drive-over	2000 Kg
Cable included	Yes
Cable length	1 m
Resin potting	Yes
Type of light emission	Multiple emission
Net weight	0.260 Kg
Electrostatic discharge protection	Yes
Surge protection	1 KV
Product technological characteristics	Acquastop

Finishing casing	
Material	AISI 316L steel
Colour	steel
Processing	Brushing



Uplights | 198-264 V AC /186-275 V DC | 1 x powerLED 1.6 W DC - 3 W AC | CRI 80 | Base  
**83564M18**

Multiple emission uplights for outdoor application. The super warm white LED light source with a radial bi-directional emission light distribution is composed of 1 powerled LEDs with CCT of 2700 K and a CRI 80; the source luminous flux is 233 lm, with a 145.6 lm/W nominal luminous efficacy.

The device body is made of aisi 316l steel and features a steel finish, processed by means of brushing. The ingress protection degree is IP67; the total weight is of 0.260 kg.

The total absorbed power is 3 W. The power supply cable is included and features a 1 m length.

The device features protection class II and can be floor-mounted with an outer casing, code 84918(for concrete or masonry).

Compliant with the EN 60598-1 standard and its specific provisions.

### Energy efficiency class

This product contains a light source of energy efficiency class D.

### Illuminotechnical Features

Light Output Ratio (LOR)	33 %
Source lumens	233 lm
Delivered lumens	79 lm
Consumption	3 W
Luminaire efficacy	26 lm/W
Colour temperature	2700 K
Standard Deviation of Colour Matching	1.5 Step
Colour rendering index	80 Ra

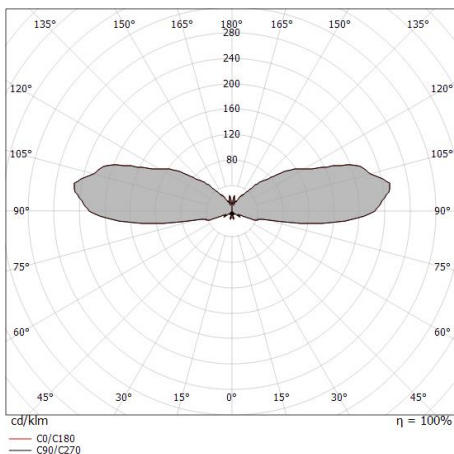
Standard Operating Ambient Temperature	-20 / +50°C
Ordinary temperature on the glass	50°C

### LED Life / Failure Ratio

L70 B10 C0 361980h (at Tj 60 Ta 25 )

### OPTICAL

C0/C180 optics	180°
Light distribution symmetry	Symmetrical





Alcor\_Q4 316 | Step Lights | Accessories  
**83564M18**



Outer casing

installation position: floor, land; type of installation: masonry L=87mm, H=60mm, D=60mm.

Material:ABS Plastic, colour:black.

**Code**

84918