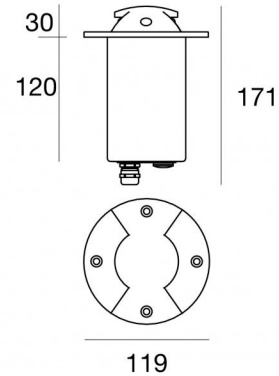


Alcor_R2 Blade



Uplights | 198-264 V
2 x powerLEDs 4 W DC - 4.5 W AC | CRI 80
83521W05



| Technical data | |
|--|-------------------|
| Type | Semi-recessed - - |
| Installation position | Floor |
| Installation environment | Outdoor |
| Light Source | LED |
| Circuit structure | powerLEDs |
| Optics | Ultra Spot |
| Light emission direction | external |
| Nominal power | 4 W DC |
| Total Power | 4.5 W |
| Source lumens | 532 lm |
| Nominal input voltage | 220 - 240 V AC |
| Input voltage range | 198 - 264 V AC |
| CCT / Tone | 3000 K |
| Colour rendering index | 80 Ra |
| C.C. / C.V. | AC |
| Safety class | 1 |
| IP | IP67 |
| IK | IK10 |
| Glow wire test | 850° |
| Direct mounting on normally flammable surfaces | Yes |
| CE | Yes |
| Driver included | Driver |
| Dimmable article | No |
| Directional | No |
| Tilting | No |
| Walk-over | Yes |
| Drive-over | 2500 Kg |
| Cable included | Yes |
| Cable length | 1 m |
| Resin potting | No |
| Type of light emission | Double emission |
| Net weight | 1.32 Kg |
| Electrostatic discharge protection | Yes |
| Surge protection | Yes |
| Product technological characteristics | Acquastop - TVS |

Finishing diffuser

| | |
|------------|------------------------------|
| Material | Extra clear glass - Tempered |
| Colour | opaline |
| Processing | Sandblasting |

Finishing flange

| | |
|------------|---------------|
| Material | Aluminium |
| Colour | grey RAL 9006 |
| Processing | Coating |

Finishing base

| | |
|----------|-------|
| Material | PC |
| Colour | black |

Alcor_R2 Blade



Uplights | 198-264 V | 2 x powerLEDs 4 W DC - 4.5 W AC | CRI 80 | Base
83521W05

Double emission uplights for outdoor application. The warm white LED light source with a ultra spot light distribution is composed of 2 powered LEDs with CCT of 3000 K and a CRI 80; the source luminous flux is 532 lm, with a 133.0 lm/W nominal luminous efficacy.

The diffuser is made of extra clear glass - tempered with a sandblasting treatment. The ingress protection degree is IP67; the total weight is of 1.32 kg.

The total absorbed power is 4.5 W. The power supply cable is included and features a 1 m length.

The device features protection class I and can be floor-mounted with an outer casing, code 84900(for concrete or masonry).

Compliant with the EN 60598-1 standard and its specific provisions.

Energy efficiency class

This product contains 2 light sources of energy efficiency class D.

Illuminotechnical Features

| | |
|---------------------------------------|----------|
| Light Output Ratio (LOR) | 6 % |
| Source lumens | 532 lm |
| Delivered lumens | 33 lm |
| Consumption | 4.5 W |
| Luminaire efficacy | 7 lm/W |
| Colour temperature | 3000 K |
| Standard Deviation of Colour Matching | 1.5 Step |
| Colour rendering index | 80 Ra |

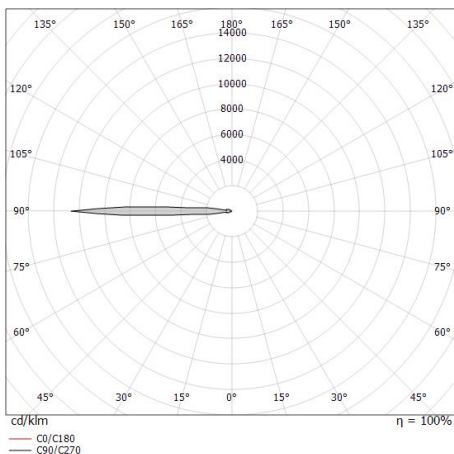
| | |
|--|-------------|
| Standard Operating Ambient Temperature | -20 / +50°C |
| Ordinary temperature on the glass | 50°C |

LED Life / Failure Ratio

L70 B10 C0 361980h (at Tj 60 Ta 25)

OPTICAL

| | |
|-----------------------------|-------------|
| C0/C180 optics | 180° |
| Light distribution symmetry | Symmetrical |



Alcor_R2 Blade



Alcor_R2 Blade | Step Lights | Accessories
83521W05



Outer casing

installation position: floor, land; type of installation: masonry L=220mm, H=110mm,
D=110mm.

Material:ABS Plastic, colour:black.

Code

84900