

# Vedette\_Q Double emission



Wall Lights | 198-264 V  
2 arrayLED 28 W DC - 30 W AC | CRI 80

**82811M60**



| Technical data                                 |                     |
|--|---------------------|
| Type   | Surface             |
| Installation position                          | Wall lights         |
| Installation environment                       | Outdoor             |
| Light Source                                   | LED                 |
| Circuit structure                              | arrayLED            |
| Optics   | Double Wide Flood   |
| Light emission direction                       | downward and upward |
| Nominal power                                  | 28 W DC             |
| Total Power                                    | 30 W                |
| Source lumens                                  | 3352 lm             |
| Nominal input voltage                          | 220 - 240 V AC      |
| Input voltage range                            | 198 - 264 V AC      |
| Frequency                                      | 50 - 60 Hz          |
| CCT / Tone                                     | 2700 K              |
| Colour rendering index                         | 80 Ra               |
| C.C. / C.V.                                    | AC                  |
| Safety class                                   | 1                   |
| IP   | IP65                |
| IK   | IK06                |
| Glow wire test                                 | 850°                |
| Direct mounting on normally flammable surfaces | Yes                 |
| CE   | Yes                 |
| Driver included                                | Driver              |
| Dimmable article                               | No                  |
| Directional                                    | No                  |
| Tilting  | No                  |
| Walk-over                                      | No                  |
| Drive-over                                     | No                  |
| Cable included                                 | Yes                 |
| Cable length                                   | 1 m                 |
| Resin potting                                  | No                  |
| Type of light emission                         | Double emission     |
| Net weight                                     | 1.75 Kg             |
| Electrostatic discharge protection             | Yes                 |
| Surge protection                               | 1 KV                |
| Product technological characteristics          | Acquastop - TVS     |

## Finishing casing

|            |                                      |
|------------|--------------------------------------|
| Material   | Die-cast Aluminium EN AB - 46100     |
| Colour     | Dark brown                           |
| Processing | Open pore anodizing + Powder Coating |

## Cables Electrification

|                 |    |
|-----------------|----|
| Cable connector | No |
|-----------------|----|



Wall Lights | 198-264 V | 2 arrayLED 28 W DC - 30 W AC | CRI 80 | Base **82811M60**

Double emission wall lights for outdoor application. The super warm white LED light source with a double wide flood light distribution is composed of 2 arrayed LEDs with CCT of 2700 K and a CRI 80; the source luminous flux is 3352 lm, with a 119.7 lm/W nominal luminous efficacy.

The device body is made of die-cast aluminium en ab - 46100 and features a dark brown finish, processed by means of open pore anodizing + powder coating. The ingress protection degree is IP65; the total weight is of 1.75 kg.

The total absorbed power is 30 W. The power supply cable is included and features a 1 m length.

The device features protection class I and can be wall lights-mounted.

Compliant with the EN 60598-1 standard and its specific provisions.

### Energy efficiency class

This product contains 2 light sources of energy efficiency class E.

### Illuminotechnical Features

|                                       |                |
|---------------------------------------|----------------|
| Light Output Ratio (LOR)              | 56 %           |
| Source lumens                         | 3352 lm        |
| Delivered lumens                      | 1887 lm        |
| Consumption                           | 30 W           |
| Luminaire efficacy                    | 62 lm/W        |
| Colour temperature                    | 2700 K         |
| Standard Deviation of Colour Matching | 2 Step MacAdam |
| Colour rendering index                | 80 Ra          |

|  |             |
|--|-------------|
| Standard Operating Ambient Temperature | -20 / +50°C |
| Ordinary temperature on the glass      | 40°C        |

### LED Life / Failure Ratio

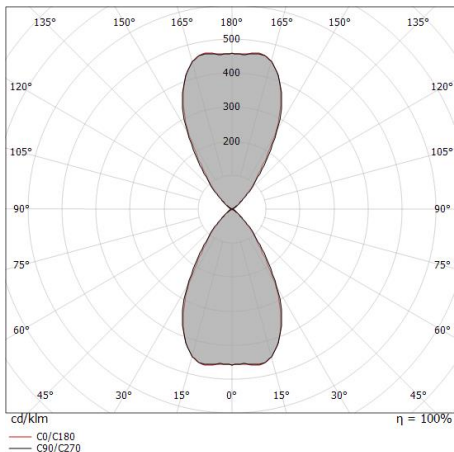
L70 B10 C0 252000h (at Tj 65 Ta 25 )

### UGR

|                   |          |
|-------------------|----------|
| UGR axial         | 19.9     |
| UGR transversal   | 19.5     |
| X=4H   Y=8H       | S=0.25H  |
| Reflection factor | 70/50/20 |

### OPTICAL

|                             |             |
|-----------------------------|-------------|
| C0/C180 optics              | 62°         |
| Light distribution simmetry | Symmetrical |



| Distance [m] | Cone diameter [m] | illuminance [lx]                        |
|--------------|-------------------|---|
| 0.5          | 0.62<br>0.60      | E(0°) 3460<br>E(C90) 1087<br>E(C0) 1111 |
| 1.0          | 1.23<br>1.20      | E(0°) 865<br>E(C90) 272<br>E(C0) 278    |
| 1.5          | 1.85<br>1.80      | E(0°) 384<br>E(C90) 121<br>E(C0) 123    |
| 2.0          | 2.46<br>2.38      | E(0°) 216<br>E(C90) 68<br>E(C0) 69      |
| 2.5          | 3.08<br>2.99      | E(0°) 138<br>E(C90) 43<br>E(C0) 44      |
| 3.0          | 3.69<br>3.59      | E(0°) 96<br>E(C90) 30<br>E(C0) 31       |

— C0/C180 (Half-peak divergence: 61.8°)  
- - C90/C270 (Half-peak divergence: 63.2°)