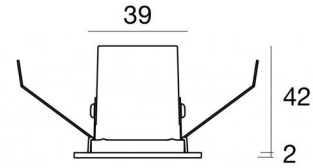
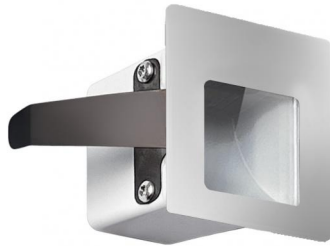
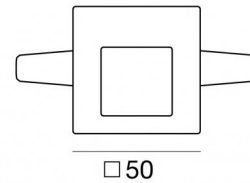




Wall Lights | 176-264 V AC /230-280 V DC
1 x powerLED 1 W DC - 1.5 W AC | CRI 80
82745N07



40 x 45



Technical data

Type	Encasement with flange - -
Installation position	Wall lights
Installation environment	Outdoor
Light Source	LED
Circuit structure	powerLED
Optics	Asymmetric Wallwasher
Light emission direction	downward
Nominal power	1 W DC
Total Power	1.5 W
Source lumens	165 lm
Nominal input voltage	220 - 240 V AC
Input voltage range	176 - 264 V AC
Frequency	50 - 60 Hz
CCT / Tone	4000 K
Colour rendering index	80 Ra
C.C. / C.V.	AC
Safety class	2
IP	IP65
IK	IK08
Glow wire test	850°
Direct mounting on normally flammable surfaces	Yes
CE	Yes
Driver included	Driver
Dimmable article	No
Directional	No
Tilting	No
Walk-over	No
Drive-over	No
Cable included	Yes
Cable length	1 m
Resin potting	No
Type of light emission	Single emission
Net weight	0.027 Kg
Electrostatic discharge protection	Yes
Surge protection	0.5 KV
Product technological characteristics	TVS

Finishing casing

Material	Die-cast Aluminium EN AB - 46100
Colour	Aluminium

Finishing diffuser

Material	Extra clear glass - Tempered
Colour	transparent

Finishing flange

Material	UV Resistant Polycarbonate
Colour	chrome
Processing	Metallization



Wall Lights | 176-264 V AC /230-280 V DC | 1 x powerLED 1 W DC - 1.5 W AC | CRI 80 |
Base
82745N07

Single emission wall lights for outdoor application. The natural white LED light source with a asymmetric wallwasher light distribution is composed of 1 powered LEDs with CCT of 4000 K and a CRI 80; the source luminous flux is 165 lm, with a 165.0 lm/W nominal luminous efficacy.

The device body is made of die-cast aluminium en ab - 46100 and features a aluminium finish; the diffuser is made of extra clear glass - tempered. The ingress protection degree is IP65; the total weight is of 0.027 kg.

The total absorbed power is 1.5 W. The power supply cable is included and features a 1 m length.

The device features protection class II and can be wall lights-mounted, with a 40 x 45 mm hole (in plasterboard) with an outer casing, code 83181(for concrete or masonry).

Compliant with the EN 60598-1 standard and its specific provisions.

Energy efficiency class

This product contains a light source of energy efficiency class D.

Illuminotechnical Features

Light Output Ratio (LOR)	43 %
Source lumens	165 lm
Delivered lumens	71 lm
Consumption	1.5 W
Luminaire efficacy	47 lm/W
Colour temperature	4000 K
Standard Deviation of Colour Matching	1.5 Step
Colour rendering index	80 Ra

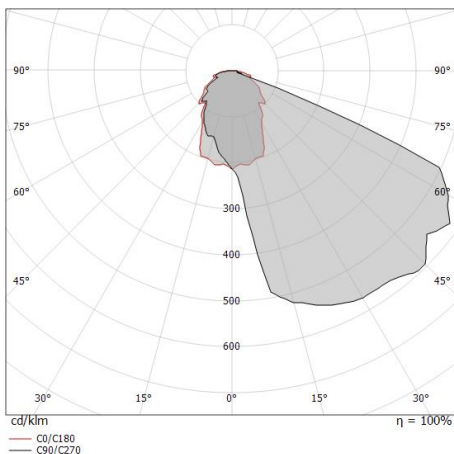
Standard Operating Ambient Temperature	-20 / +50°C
Ordinary temperature on the glass	40°C

LED Life / Failure Ratio

L70 B10 C0 361980h (at Tj 60 Ta 25)

OPTICAL

C0/C180 optics	73°
Light distribution simmetry	Asymmetrical



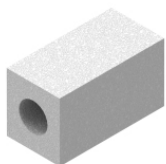
Distance [m]	Cone diameter [m]	Illuminance [lx]
0.5	0.73	60 16
1.0	1.47	15 4
1.5	2.20	7 2
2.0	2.94	4 1
2.5	3.67	2 1
3.0	4.41	2 0

— C0/C180 (Half-peak divergence: 72.6°)

Step66



Step66 | Step Lights | Accessories
82745N07



Outer casing

installation position: wall lights; type of installation: masonry L=45mm, H=40.5mm,
D=80mm

Code

83181