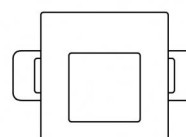
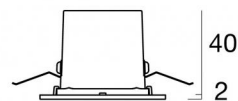
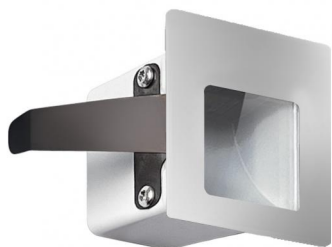


Step66



Wall Lights | 1 x powerLED 1 W DC 350 mA | CRI 80
82741W07



□ 50



40 x
45

Technical data	
Type	Encasement with flange - -
Installation position	Wall lights
Installation environment	Outdoor
Light Source	LED
Circuit structure	powerLED
Optics	Asymmetric Wallwasher
Light emission direction	downward
Nominal power	1 W DC
Source lumens	154 lm
Input voltage range	350mA
CCT / Tone	3000 K
Colour rendering index	80 Ra
C.C. / C.V.	CC
Safety class	3
IP	IP65
IK	IK08
Glow wire test	850°
Direct mounting on normally flammable surfaces	Yes
CE	Yes
Driver included	No
Dimmable article	DALI - 1-10V
Directional	No
Tilting	No
Walk-over	No
Drive-over	No
Cable included	Yes
Cable length	0.5 m
Resin potting	No
Type of light emission	Single emission
Net weight	0.027 Kg
Electrostatic discharge protection	No
Surge protection	No
Product technological characteristics	TVS

Finishing casing

Material	Die-cast Aluminium EN AB - 46100
Colour	Aluminium

Finishing diffuser

Material	Extra clear glass - Tempered
Colour	transparent

Finishing flange

Material	UV Resistant Polycarbonate
Colour	chrome
Processing	Metallization

Electronics



89421
On/Off Driver 198~264V AC / 176~275V DC (1 - 6 art.)



89419
On/Off Driver 198~264V AC / 176~275V DC (1 - 2 art.)



C-E200006
On/Off Driver 198~264V AC / 180~275V DC (1 - 12 art.)

Wall Lights | 1 x powerLED 1 W DC 350 mA | CRI 80 | Base 82741W07

Single emission wall lights for outdoor application. The warm white LED light source with a asymmetric wallwasher light distribution is composed of 1 powered LEDs with CCT of 3000 K and a CRI 80; the source luminous flux is 154 lm, with a 154.0 lm/W nominal luminous efficacy.

The device body is made of die-cast aluminium en ab - 46100 and features a aluminium finish; the diffuser is made of extra clear glass - tempered. The ingress protection degree is IP65; the total weight is of 0.027 kg. The power supply driver is not provided and is to be ordered separately.

The total absorbed power is 1 W. The power supply cable is included and features a 0.5 m length.

The device features protection class III and can be wall lights-mounted, with a 40 x 45 mm hole (in plasterboard) with an outer casing, code 83181 (for concrete or masonry).

Compliant with the EN 60598-1 standard and its specific provisions.

Energy efficiency class

This product contains a light source of energy efficiency class D.

Illuminotechnical Features

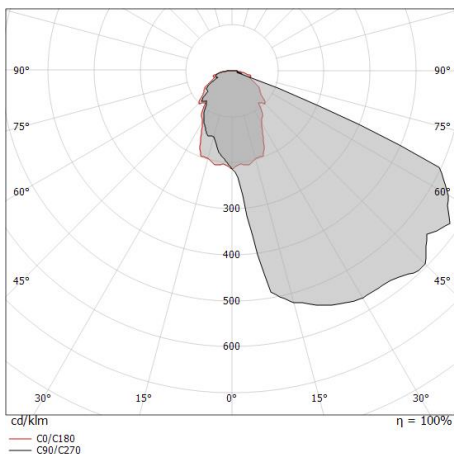
Light Output Ratio (LOR)	42 %
Source lumens	154 lm
Delivered lumens	65 lm
Consumption	1,0 W
Luminaire efficacy	65 lm/W
Colour temperature	3000 K
Standard Deviation of Colour Matching	1.5 Step
Colour rendering index	80 Ra
Standard Operating Ambient Temperature	-20 / +50°C
Ordinary temperature on the glass	40°C

LED Life / Failure Ratio

L70 B10 C0 361980h (at Tj 60 Ta 25)

OPTICAL

C0/C180 optics	73°
Light distribution symmetry	Asymmetrical

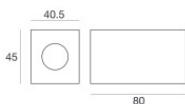
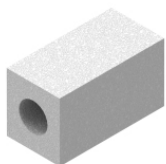


Distance [m]	Cone diameter [m]	Illuminance [lx]
0.5	0.73	55 14
1.0	1.47	14 4
1.5	2.20	6 2
2.0	2.94	3 1
2.5	3.67	2 1
3.0	4.41	2 0

Distance [m] Cone diameter [m] Illuminance [lx]
 — C0/C180 (Half-peak divergence: 72.6°)



Step66 | Step Lights | Accessories
82741W07



Outer casing

installation position: wall lights; type of installation: masonry L=45mm, H=40.5mm,
D=80mm

Code

83181