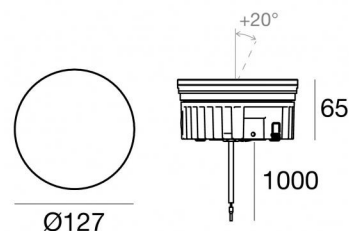


Uplights | arrayLED 0 W DC 24 V | CRI 80
82692N30

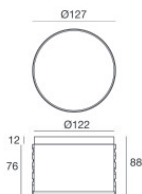


Technical data	
Type	Walk Over
Installation position	Floor
Installation environment	Outdoor
Light Source	LED
Circuit structure	arrayLED
Optics	Flood
Light emission direction	upward
Nominal power	0 W DC
Input voltage range	24 V
CCT / Tone	4000 K
Colour rendering index	80 Ra
C.C. / C.V.	CV
Safety class	3
IP	IP68
Installation limitations	Not for underwater use
IK	IK10
Glow wire test	850°
Direct mounting on normally flammable surfaces	Yes
CE	Yes
Driver included	No
C.V. - C.C. Converter	Converter 24V included
Dimmable article	No
Directional	No
Tilting	Yes
total angle (vertical plane)	20 °
Walk-over	Yes
Drive-over	No
Cable included	Yes
Cable length	1 m
Resin potting	Yes
Type of light emission	Single emission
Net weight	0.9 Kg
Electrostatic discharge protection	No
Surge protection	No
Optics technology	Honey comb
Product technological characteristics	Acquastop

Finishing casing	
Material	Die-cast Aluminium EN AB - 46100
Colour	black
Processing	Open pore anodizing + Powder Coating
Finishing diffuser	
Material	Extra clear glass - Tempered
Colour	transparent
Processing	Silk-screening
Cables Electrification	
Cable connector	No

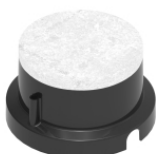


Orma_FJ | Uplights | Accessories
82692N30



Outer casing
 installation position: floor, land; type of installation: masonry L=127mm, H=88mm,
 D=127mm.
 Material:ABS Plastic, colour:black.

Code
99924



Outer casing
 installation position: floor, land; type of installation: masonry L=127mm, H=88mm,
 D=127mm.
 Material:ABS Plastic, colour:black.

Code
83040