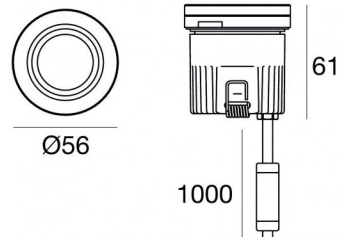




Uplights | 1 x powerLED 1 W DC 350 mA | CRI 80
82665M00



Technical data	
Type	Walk Over
Installation position	Floor
Installation environment	Outdoor
Light Source	LED
Circuit structure	powerLED
Optics	Diffused
Light emission direction	upward
Nominal power	1 W DC
Source lumens	145 lm
Input voltage range	350mA
CCT / Tone	2700 K
Colour rendering index	80 Ra
C.C. / C.V.	CC
Safety class	3
IP	IP68
Installation limitations	Not for underwater use
IK	IK10
Glow wire test	850°
Direct mounting on normally flammable surfaces	Yes
CE	Yes
Driver included	No
Dimmable article	DALI - 1-10V
Directional	No
Tilting	No
Walk-over	Yes
Drive-over	2000 Kg
Cable included	Yes
Cable length	1 m
Resin potting	Yes
Type of light emission	Single emission
Net weight	0.2 Kg
Electrostatic discharge protection	No
Surge protection	No
Product technological characteristics	Acquastop - TVS

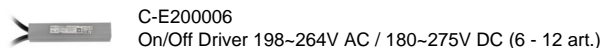
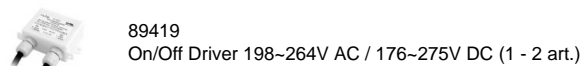
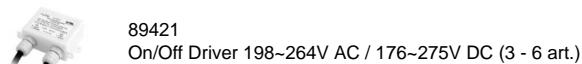
Finishing casing

Material	Die-cast Aluminium EN AB - 46100
Colour	black
Processing	Open pore anodizing + Powder Coating

Finishing diffuser

Material	Extra clear glass - Tempered
Colour	transparent
Processing	Silk-screening

Electronics



Cables Electrification

Cable connector	No
-----------------	----



Uplights | 1 x powerLED 1 W DC 350 mA | CRI 80 | Base 82665M00

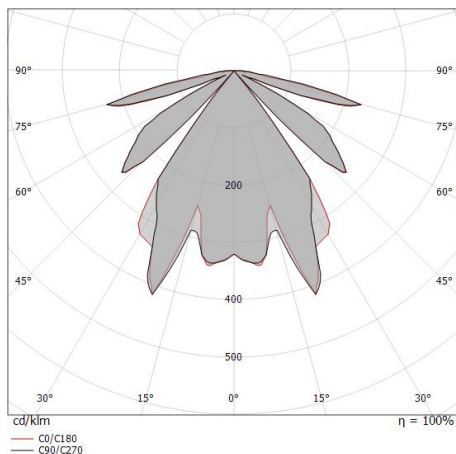
Single emission uplights for outdoor application. The super warm white LED light source with a diffused light distribution is composed of 1 powered LEDs with CCT of 2700 K and a CRI 80; the source luminous flux is 145 lm, with a 145.0 lm/W nominal luminous efficacy.

The device body is made of die-cast aluminium en ab - 46100 and features a black finish, processed by means of open pore anodizing + powder coating; the diffuser is made of extra clear glass - tempered with a silk-screening treatment. The ingress protection degree is IP68; the total weight is of 0.2 kg. The power supply driver is not provided and is to be ordered separately.

The total absorbed power is 1 W. The power supply cable is included and features a 1 m length.

The device features protection class III and can be floor-mounted with an outer casing, code 83038(for concrete or masonry).

Compliant with the EN 60598-1 standard and its specific provisions.



Distance [m]	Cone diameter [m]	Illuminance [lx]	E(0°)	E(C90)	E(C0)
0.5	3.98 3.92	8 0 0	8	0	0
1.0	7.96 7.85	2 0 0	2	0	0
1.5	11.94 11.77	1 0 0	1	0	0
2.0	15.92 15.69	0 0 0	0	0	0
2.5	19.91 19.62	0 0 0	0	0	0
3.0	23.89 23.54	0 0 0	0	0	0

Distance [m] Cone diameter [m] Illuminance [lx]

— C0/C180 (Half-peak divergence: 151.4°)
- - C90/C270 (Half-peak divergence: 151.8°)

Energy efficiency class

This product contains a light source of energy efficiency class D.

Illuminotechnical Features

Light Output Ratio (LOR)	4 %
Source lumens	145 lm
Delivered lumens	7 lm
Consumption	1,0 W
Luminaire efficacy	7 lm/W
Colour temperature	2700 K
Standard Deviation of Colour Matching	1.5 Step
Colour rendering index	80 Ra

Standard Operating Ambient Temperature -20 / +50°C

Ordinary temperature on the glass 40°C

LED Life / Failure Ratio

L70 B10 C0 361980h (at Tj 60 Ta 25)

UGR

UGR axial	20.1
UGR transversal	20
X=4H Y=8H	S=0.25H
Reflection factor	70/50/20

OPTICAL

C0/C180 optics	151°
Light distribution simmetry	Symmetrical



Orma_FO | Uplights | Accessories
82665M00



Outer casing

installation position: floor, land; type of installation: masonry L=56mm, H=88mm, D=56mm.

Material:ABS Plastic, colour:black.

Code

99922



Outer casing

installation position: floor, land; type of installation: masonry L=97mm, H=88mm, D=97mm.

Material:ABS Plastic, colour:black.

Code

83038