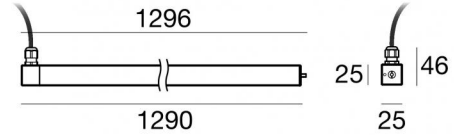
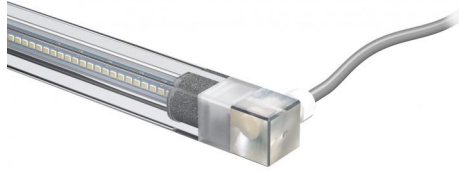


MK68_Q



Submerged | 228 topLED 20 W DC 12 V | CRI 80
82652W30



Technical data	
Type	Surface
Installation position	Wall lights
Installation environment	Outdoor
Light Source	LED
Circuit structure	topLED
Optics	Extra Wide Flood
Light emission direction	frontal
Nominal power	20 W DC
Source lumens	2940 lm
Input voltage range	12V
CCT / Tone	3000 K
Colour rendering index	80 Ra
C.C. / C.V.	CV
Safety class	3
IP	IP68
Maximum installation depth	25 m
IK	IK08
Glow wire test	850°
Direct mounting on normally flammable surfaces	Yes
CE	Yes
Driver included	No
Dimmable article	DALI - 1-10V
Directional	Swivelling
total angle (vertical plane)	360 °
Tilting	No
Walk-over	No
Drive-over	No
Cable included	Yes
Cable length	5 m
Resin potting	Yes
Type of light emission	Single emission
Net weight	0.62 Kg
Electrostatic discharge protection	No
Surge protection	No
Product technological characteristics	Acquastop - UV Resistant





Finishing casing

Material	AISI 316L steel
Colour	steel

Finishing diffuser

Material	UV Resistant Polycarbonate
Colour	transparent

Electronics

	83010 On/Off Driver 90~264V AC / 127~370V DC 60 W (1 - 3 art.)
	83015 DALI Controller 90~305V AC / 127~431V DC 120 W (1 - 5 art.)
	83013 On/Off Driver 180~305V AC / 254~431V DC 120 W (1 - 6 art.)
	83012 DALI Controller 90~305V AC / 127~431V DC 60 W (1 - 3 art.)

Cables Electrification

Cable connector	No
-----------------	----



Submerged | 228 topLED 20 W DC 12 V | CRI 80 | Base 82652W30

Single emission submerged for outdoor application. The warm white LED light source with a extra wide flood light distribution is composed of 228 topped LEDs with CCT of 3000 K and a CRI 80; the source luminous flux is 2940 lm, with a 147.0 lm/W nominal luminous efficacy.

The device body is made of aisi 316l steel and features a steel finish; the diffuser is made of uv resistant polycarbonate. The ingress protection degree is IP68; the total weight is of 0.62 kg. The power supply driver is not provided and is to be ordered separately.

The total absorbed power is 20 W. The power supply cable is included and features a 5 m length.

The device features protection class III and can be wall lights-mounted with an outer casing, code 83023(for concrete or masonry).

Compliant with the EN 60598-1 standard and its specific provisions.

Energy efficiency class

This product contains 4 light sources of energy efficiency class D.

Illuminotechnical Features

Light Output Ratio (LOR)	84 %
Source lumens	2940 lm
Delivered lumens	2486 lm
Consumption	20 W
Luminaire efficacy	124 lm/W
Colour temperature	3000 K
Standard Deviation of Colour Matching	3 Step MacAdam
Colour rendering index	80 Ra
Standard Operating Ambient Temperature	-40 / +50°C
Ordinary temperature on the glass	40°C

LED Life / Failure Ratio

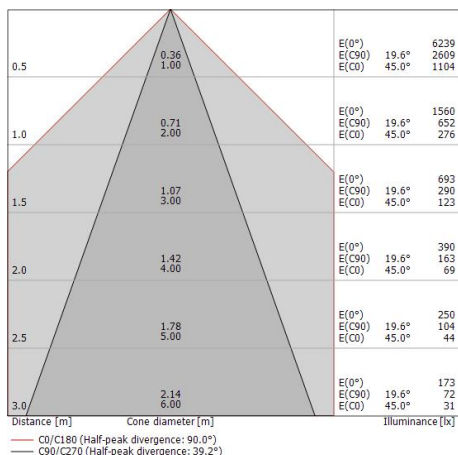
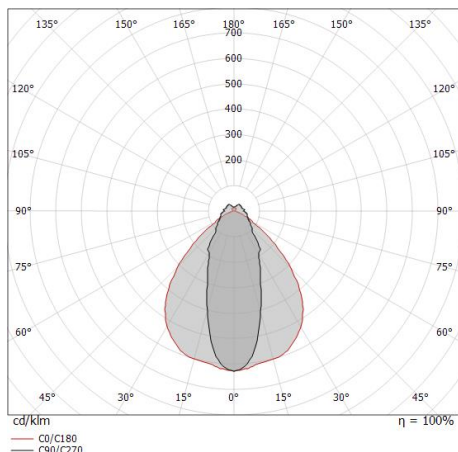
L70 B10 C0 145770h (at Tj 65 Ta 25)

UGR

UGR axial	25.7
UGR transversal	22.1
X=4H Y=8H	S=0.25H
Reflection factor	70/50/20

OPTICAL

C90/C270 optics	39°
C0/C180 optics	90°
Light distribution simmetry	Symmetrical 2 assis





MK68_Q | Submerged | Accessories
82652W30



Connector - 3-way gel connector - IP68 Max 3x1.5 mm2

Code
98991



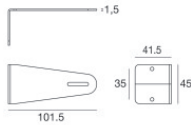
Connector - 3-way connector - IP68 Min.3x0.5mmq / Max 3x1.5mm2

Code
84893



Connector

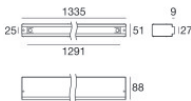
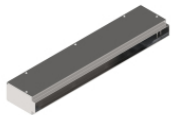
Code
89548



Bracket

installation position: wall lights, ceiling, floor L=101.5mm, H=45mm, D=41.5mm.
 Material:AISI 316 steel, colour:steel.

Finish
 **Code**
83020



Outer casing

installation position: floor; type of installation: masonry L=1335mm, H=88mm, D=51mm.
 Material:AISI 316 steel, colour:steel.

Finish
 **Code**
83023