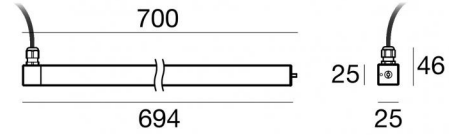
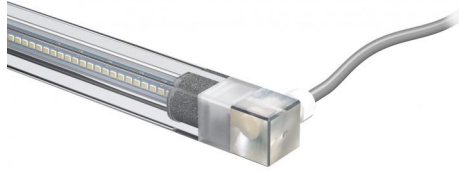


MK68_Q



Submerged | topLED 0 W DC | CRI 80
82650C30



Technical data	
Type	Surface
Installation position	Wall lights
Installation environment	Outdoor
Light Source	LED
Circuit structure	topLED
Optics	Extra Wide Flood
Light emission direction	frontal
Nominal power	0 W DC
CCT / Tone	6000 K
Colour rendering index	80 Ra
C.C. / C.V.	CV
Safety class	3
IP	IP68
Maximum installation depth	25 m
IK	IK08
Glow wire test	850°
Direct mounting on normally flammable surfaces	Yes
CE	Yes
Driver included	No
Dimmable article	DALI - 1-10V
Directional	Swivelling
total angle (vertical plane)	360 °
Tilting	No
Walk-over	No
Drive-over	No
Cable included	Yes
Cable length	5 m
Resin potting	Yes
Type of light emission	Single emission
Net weight	0.40 Kg
Electrostatic discharge protection	No
Surge protection	No
Product technological characteristics	Acquastop - UV Resistant

Finishing casing	
Material	AISI 316L steel
Colour	steel
Finishing diffuser	
Material	UV Resistant Polycarbonate
Colour	transparent
Cables Electrification	
Cable connector	No



MK68_Q | Submerged | Accessories
82650C30



Connector - 3-way gel connector - IP68 Max 3x1.5 mm2

Code
98991



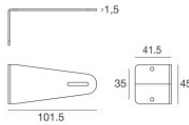
Connector - 3-way connector - IP68 Min.3x0.5mmq / Max 3x1.5mm2

Code
84893



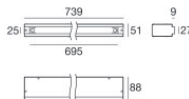
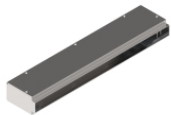
Connector

Code
89548



Bracket
 installation position: wall lights, ceiling, floor L=101.5mm, H=45mm, D=41.5mm.
 Material:AISI 316 steel, colour:steel.

Finish
 **Code**
83020



Outer casing
 installation position: floor; type of installation: masonry L=739mm, H=88mm, D=51mm.
 Material:AISI 316 steel, colour:steel.

Finish
 **Code**
83022