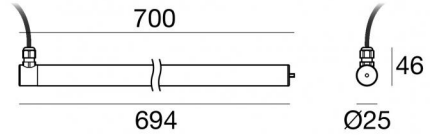


# MK68\_R



Submerged | topLED 0 W DC | CRI 80  
82642N30



Technical data	
Type	Surface
Installation position	Wall lights
Installation environment	Outdoor
Light Source	LED
Circuit structure	topLED
Optics	Extra Wide Flood
Light emission direction	frontal
Nominal power	0 W DC
CCT / Tone	4000 K
Colour rendering index	80 Ra
C.C. / C.V.	CV
Safety class	3
IP	IP68
Maximum installation depth	25 m
IK	IK08
Glow wire test	850°
Direct mounting on normally flammable surfaces	Yes
CE	Yes
Driver included	No
Dimmable article	DALI - 1-10V
Directional	No
Tilting	No
Walk-over	No
Drive-over	No
Cable included	Yes
Cable length	5 m
Resin potting	Yes
Type of light emission	Single emission
Net weight	0.45 Kg
Electrostatic discharge protection	No
Surge protection	No
Product technological characteristics	Acquastop - UV Resistant

### Finishing casing

Material	AISI 316L steel
Colour	steel

### Finishing diffuser

Material	UV Resistant Polycarbonate
Colour	transparent

### Cables Electrification

Cable connector	No
-----------------	----



MK68\_R | Submerged | Accessories  
**82642N30**



Connector - 3-way gel connector - IP68 Max 3x1.5 mm2

**Code**  
98991



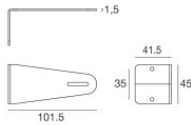
Connector - 3-way connector - IP68 Min.3x0.5mmq / Max 3x1.5mm2

**Code**  
84893



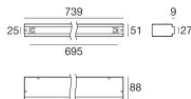
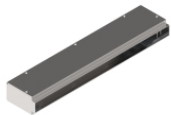
Connector

**Code**  
89548



Bracket  
 installation position: wall lights, ceiling, floor L=101.5mm, H=45mm, D=41.5mm.  
 Material:AISI 316 steel, colour:steel.

**Finish**  
 **Code**  
83020



Outer casing  
 installation position: floor; type of installation: masonry L=739mm, H=88mm, D=51mm.  
 Material:AISI 316 steel, colour:steel.

**Finish**  
 **Code**  
83022