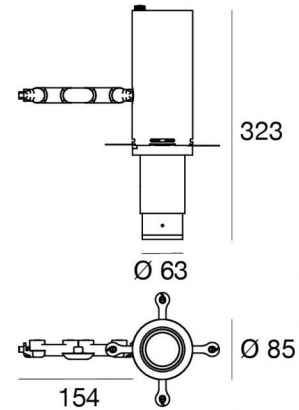


Navata Pound Shaper distance



Projectors | 1 arrayLED 27 W DC 700 mA | CRI 98
82632W66



| Technical data | |
|--|----------------------------------|
| Type | Surface |
| Installation position | Wall lights - Ceiling - Floor |
| Installation environment | Indoor |
| Light Source | LED |
| Circuit structure | arrayLED |
| Optics | Shaper Long Distance |
| Light emission direction | frontal |
| Nominal power | 27 W DC |
| Source lumens | 2785 lm |
| Input voltage range | 700mA |
| CCT / Tone | 3000 K |
| Colour rendering index | 98 Ra |
| C.C. / C.V. | CC |
| Safety class | 3 |
| IP | IP20 |
| Glow wire test | 850° |
| Direct mounting on normally flammable surfaces | Yes |
| CE | Yes |
| Driver included | No |
| Dimmable article | DALI - 1-10V |
| Directional | Swivelling |
| total angle (vertical plane) | 90 ° |
| total angle (horizontal plane) | 360 ° |
| Tilting | No |
| Walk-over | No |
| Drive-over | No |
| Cable included | No |
| Resin potting | No |
| Type of light emission | Single emission |
| Net weight | 1.45 Kg |
| Electrostatic discharge protection | No |
| Surge protection | No |

Finishing casing

| | |
|------------|----------------------------------|
| Material | Die-cast Aluminium EN AB - 46100 |
| Colour | Black |
| Processing | Powder coating |

Electronics



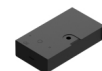
99112
On/Off Driver 198~264V AC (1 art.)



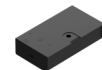
99941
DALI-2 Controller (1 art.)



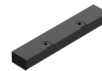
99943
Multi Power 198~264V AC / 176~264V DC (1 art.)



99951
DALI Multi Power 198~264V AC / 176~275V DC (1 art.)



99953
Multi Power 198~264V AC / 176~264V DC (1 art.)



83172
Bluetooth Controller (1 art.)



C-E100008
Multi Power 198~264V AC / 180~275V DC (1 art.)

Navata Pound Shaper distance



Projectors | 1 arrayLED 27 W DC 700 mA | CRI 98 | Base
82632W66

Single emission projectors for indoor application. The warm white LED light source with a shaper long distance light distribution is composed of 1 arrayed LEDs with CCT of 3000 K and a CRI 98; the source luminous flux is 2785 lm, with a 103.1 lm/W nominal luminous efficacy.

The device body is made of die-cast aluminium en ab - 46100 and features a black finish, processed by means of powder coating. The ingress protection degree is IP20; the total weight is of 1.45 kg. The power supply driver is not provided and is to be ordered separately.

The total absorbed power is 27 W.

The device features protection class III and can be wall lights, ceiling or floor-mounted.

Compliant with the EN 60598-1 standard and its specific provisions.

Energy efficiency class

This product contains a light source of energy efficiency class F.

Illuminotechnical Features

| | |
|--|----------------|
| Light Output Ratio (LOR) | 11 % |
| Source lumens | 2785 lm |
| Delivered lumens | 333 lm |
| Consumption | 27 W |
| Luminaire efficacy | 12 lm/W |
| Colour temperature | 3000 K |
| Standard Deviation of Colour Matching | 2 Step MacAdam |
| Colour rendering index | 98 Ra |
| Black Body Locus | On |
| Standard Operating Ambient Temperature | -20 / +50°C |
| Ordinary temperature on the glass | 45°C |

LED Life / Failure Ratio

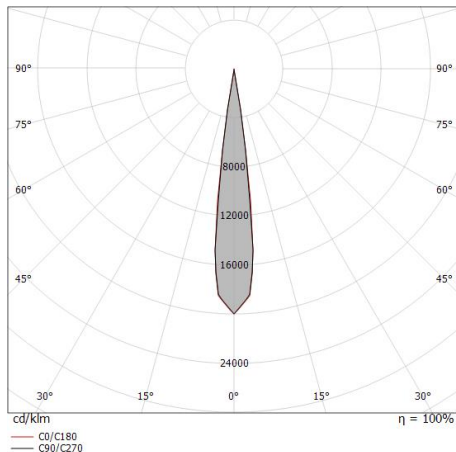
L70 B10 C0 252000h (at Tj 65 Ta 25)

UGR

| | |
|-------------------|----------|
| UGR axial | -5.6 |
| UGR transversal | -5.6 |
| X=4H Y=8H | S=0.25H |
| Reflection factor | 70/50/20 |

OPTICAL

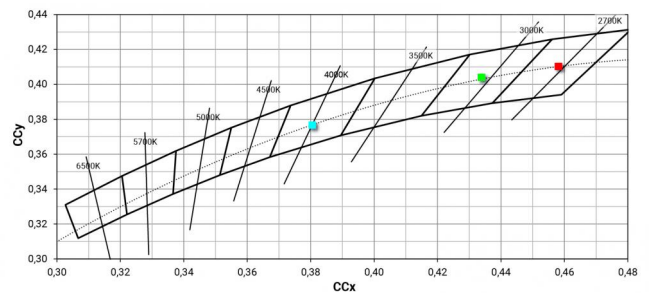
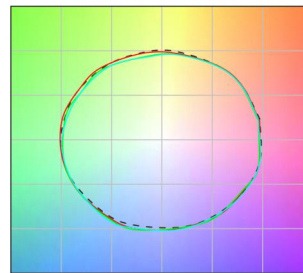
| | |
|-----------------------------|-------------|
| C0/C180 optics | 14° |
| Light distribution symmetry | Symmetrical |



| Distance [m] | Cone diameter [m] | illuminance [lx] |
|--------------|-------------------|--|
| 0.5 | 0.12 0.13 | E(0°) 26645 E(C90) 13478 E(C0) 13040 |
| 1.0 | 0.25 0.25 | E(0°) 6661 E(C90) 3369 E(C0) 3260 |
| 1.5 | 0.37 0.38 | E(0°) 2961 E(C90) 1498 E(C0) 1449 |
| 2.0 | 0.50 0.51 | E(0°) 1665 E(C90) 842 E(C0) 815 |
| 2.5 | 0.62 0.63 | E(0°) 1066 E(C90) 539 E(C0) 522 |
| 3.0 | 0.75 0.76 | E(0°) 740 E(C90) 374 E(C0) 362 |

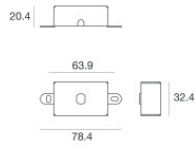
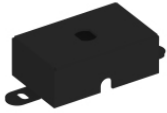
— C0/C180 (Half-peak divergence: 14.4°)
— C90/C270 (Half-peak divergence: 14.2°)

COLOR VECTOR GRAPHIC





Navata Pound Shaper distance | Projectors | Accessories
82632W66



Fixing base - Base without power supply
Material:Iron, colour:Black, processing:Coating.

Code
98589



Tool - Gobo holder
Material:Aluminium, colour:black, processing:Anodisation.

Code
99853