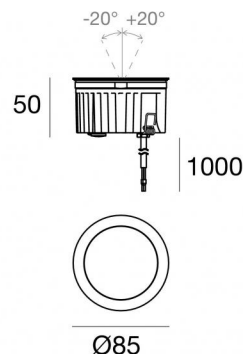




Uplights | 1 arrayLED 8 W DC 220 mA | CRI 80  
82460N60



Technical data	
Type	Walk Over
Installation position	Floor
Installation environment	Outdoor
Light Source	LED
Circuit structure	arrayLED
Optics	Wide Flood
Light emission direction	upward
Nominal power	8 W DC
Source lumens	1188 lm
Input voltage range	220mA
CCT / Tone	4000 K
Colour rendering index	80 Ra
C.C. / C.V.	CC
Safety class	3
IP	IP68
Installation limitations	Not for underwater use
IK	IK10
Glow wire test	850°
Direct mounting on normally flammable surfaces	Yes
CE	Yes
Driver included	No
Dimmable article	DALI - 1-10V
Directional	No
Tilting	Yes
total angle (vertical plane)	40 °
Walk-over	Yes
Drive-over	No
Cable included	Yes
Cable length	1 m
Resin potting	Yes
Type of light emission	Single emission
Net weight	0.5 Kg
Electrostatic discharge protection	No
Surge protection	No
Optics technology	Honey comb
Product technological characteristics	Acquastop

#### Finishing casing

Material	Die-cast Aluminium EN AB - 46100
Colour	black
Processing	Open pore anodizing + Powder Coating

#### Finishing diffuser

Material	Extra clear glass - Tempered
Colour	transparent
Processing	Silk-screening

#### Finishing flange

Material	AISI 316L steel
Colour	steel
Processing	Brushing

#### Electronics



99342  
On/Off Driver 198-264V AC (1 art.)

#### Cables Electrification

Cable connector	No
-----------------	----



## Uplights | 1 arrayLED 8 W DC 220 mA | CRI 80 | Base 82460N60

Single emission uplights for outdoor application. The natural white LED light source is composed of 1 arrayed LEDs with CCT of 4000 K and a CRI 80; the source luminous flux is 1188 lm, with a 148.5 lm/W nominal luminous efficacy.

The device body is made of die-cast aluminium en ab - 46100 and features a black finish, processed by means of open pore anodizing + powder coating; the diffuser is made of extra clear glass - tempered with a silk-screening treatment. The ingress protection degree is IP68; the total weight is of 0.5 kg. The power supply driver is not provided and is to be ordered separately.

The total absorbed power is 8 W. The power supply cable is included and features a 1 m length.

The device features protection class III and can be floor-mounted with an outer casing, code 99856(for concrete or masonry).

Compliant with the EN 60598-1 standard and its specific provisions.

### Energy efficiency class

This product contains a light source of energy efficiency class E.

### Illuminotechnical Features

Light Output Ratio (LOR)	54 %
Source lumens	1188 lm
Delivered lumens	642 lm
Consumption	8 W
Luminaire efficacy	80 lm/W
Colour temperature	4000 K
Standard Deviation of Colour Matching	2 Step MacAdam
Colour rendering index	80 Ra
Black Body Locus	On

Standard Operating Ambient Temperature	-20 / +50°C
Ordinary temperature on the glass	40°C

### LED Life / Failure Ratio

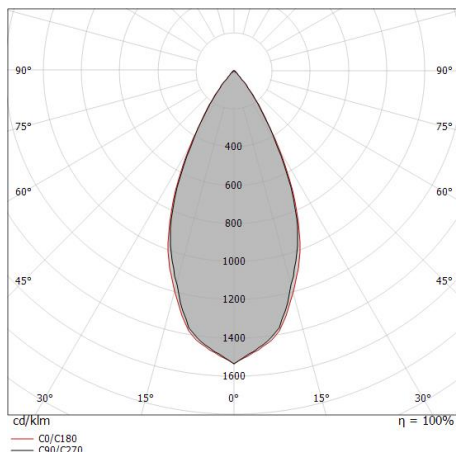
L70 B10 C0 252000h (at Tj 65 Ta 25 )

### UGR

UGR axial	16.3
UGR transversal	16.3
X=4H   Y=8H	S=0.25H
Reflection factor	70/50/20

### OPTICAL

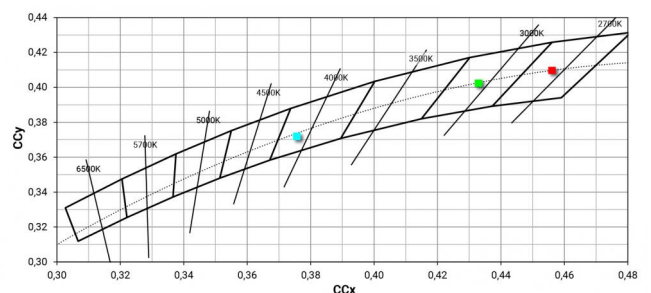
C0/C180 optics	49°
Light distribution simmetry	Symmetrical

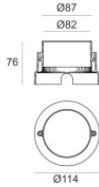


Distance [m]	Cone diameter [m]	Illuminance [lx]
0.5	0.45 0.46	E(0°) 3937 E(C90) 1490 E(C0) 1473
1.0	0.91 0.92	E(0°) 984 E(C90) 372 E(C0) 368
1.5	1.36 1.39	E(0°) 437 E(C90) 166 E(C0) 164
2.0	1.81 1.85	E(0°) 246 E(C90) 93 E(C0) 92
2.5	2.27 2.31	E(0°) 157 E(C90) 60 E(C0) 59
3.0	2.72 2.77	E(0°) 109 E(C90) 41 E(C0) 41

— C0/C180 (Half-peak divergence: 49.6°)  
— C90/C270 (Half-peak divergence: 48.8°)

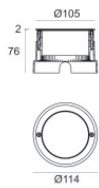
### COLOR VECTOR GRAPHIC






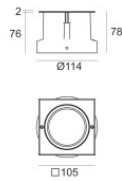
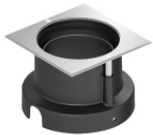
Outer casing  
 installation position: floor, land; type of installation: masonry L=114mm, H=76mm,  
 D=114mm.  
 Material:ABS Plastic, colour:black.

**Code**  
99651



Outer casing  
 installation position: floor, land; type of installation: masonry L=114mm, H=78mm,  
 D=114mm.  
 Material:AISI 316 steel, colour:steel.

**Finish**  
 **Code**  
99563



Outer casing  
 installation position: floor, land; type of installation: masonry L=105mm, H=76mm,  
 D=105mm.  
 Material:ABS Plastic, colour:black.

**Code**  
99856