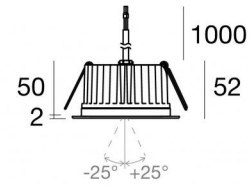




Downlights | 1 arrayLED 9 W DC 24 V | CRI 80
82453W15



Ø97

Technical data	
Type	Encasement with flange
Installation position	Ceiling
Installation environment	Outdoor
Light Source	LED
Circuit structure	arrayLED
Optics	Spot
Light emission direction	downward
Nominal power	9 W DC
Source lumens	1320 lm
Input voltage range	24 V
CCT / Tone	3000 K
Colour rendering index	80 Ra
C.C. / C.V.	CV
Safety class	3
IP	IP67
IK	IK10
Glow wire test	850°
Direct mounting on normally flammable surfaces	Yes
CE	Yes
Driver included	No
C.V. - C.C. Converter	Converter 24V included
Dimmable article	DALI - 1-10V
Directional	No
Tilting	Yes
total angle (vertical plane)	50 °
Walk-over	No
Drive-over	No
Cable included	Yes
Cable length	1 m
Resin potting	Yes
Type of light emission	Single emission
Net weight	0.5 Kg
Electrostatic discharge protection	No
Surge protection	No
Optics technology	Honey comb
Product technological characteristics	Acquastop

Finishing casing

Material	Die-cast Aluminium EN AB - 46100
Colour	black
Processing	Open pore anodizing + Powder Coating

Finishing diffuser

Material	Extra clear glass - Tempered
Colour	transparent
Processing	Silk-screening

Finishing flange

Material	AISI 316L steel
Colour	steel
Processing	Brushing

Electronics

	89488 On/Off Driver 190~250V AC / 180~275V DC 15 W (1 art.)
	89179 On/Off Driver 198~264V AC 24 W (1 - 2 art.)
	89359 On/Off Driver 198~264V AC / 180~275V DC 48 W (1 - 5 art.)
	99331 On/Off Driver 198~264V AC / 176~275V DC 150 W (1 - 16 art.)
	99660 DALI - 1-10V Controller 24V DC 216 W (1 art.)
	C-E500023 DALI - 1-10V - Push and Simply Dim Controller 8~53V DC 576 W (1 art.)

Cables Electrification

Cable connector	No
-----------------	----



Downlights | 1 arrayLED 9 W DC 24 V | CRI 80 | Base 82453W15

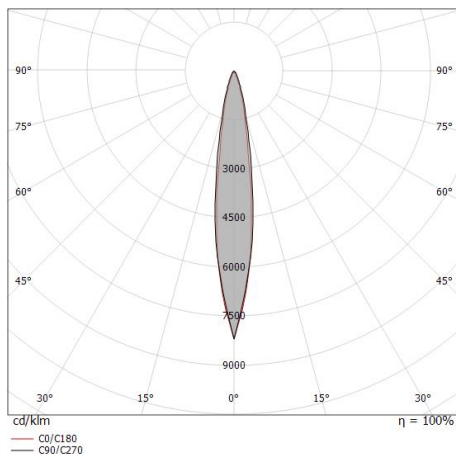
Single emission recessed downlights for outdoor application. The warm white LED light source with a spot light distribution is composed of 1 arrayed LEDs with CCT of 3000 K and a CRI 80; the source luminous flux is 1320 lm, with a 146.7 lm/W nominal luminous efficacy.

The device body is made of die-cast aluminium en ab - 46100 and features a black finish, processed by means of open pore anodizing + powder coating; the diffuser is made of extra clear glass - tempered with a silk-screening treatment. The ingress protection degree is IP67; the total weight is of 0.5 kg.

The total absorbed power is 9 W. The power supply cable is included and features a 1 m length.

The device features protection class III and can be ceiling-mounted, with a 86 mm diameter hole (in plasterboard) with an outer casing, code 99749(for concrete or masonry).

Compliant with the EN 60598-1 standard and its specific provisions.



Distance [m]	Cone diameter [m]	illuminance [lx]
0.5	0.14 0.11	E(0°) 22251 E(C90) 7.9° 10914 E(C0) 7.4° 10946
1.0	0.28 0.26	E(0°) 5563 E(C90) 7.9° 2729 E(C0) 7.4° 2737
1.5	0.42 0.39	E(0°) 2472 E(C90) 7.9° 1213 E(C0) 7.4° 1216
2.0	0.56 0.52	E(0°) 1391 E(C90) 7.9° 682 E(C0) 7.4° 684
2.5	0.69 0.65	E(0°) 890 E(C90) 7.9° 437 E(C0) 7.4° 438
3.0	0.83 0.78	E(0°) 618 E(C90) 7.9° 303 E(C0) 7.4° 304

Distance [m] Cone diameter [m] illuminance [lx]

— C0/C180 (Half-peak divergence: 14.8°)
— C90/C270 (Half-peak divergence: 15.8°)

Energy efficiency class

This product contains a light source of energy efficiency class E.

Illuminotechnical Features

Light Output Ratio (LOR)	51 %
Source lumens	1320 lm
Delivered lumens	679 lm
Consumption	9 W
Luminaire efficacy	75 lm/W
Colour temperature	3000 K
Standard Deviation of Colour Matching	2 Step MacAdam
Colour rendering index	80 Ra

Standard Operating Ambient Temperature -20 / +50°C

Ordinary temperature on the glass 40°C

LED Life / Failure Ratio

L70 B10 C0 252000h (at Tj 65 Ta 25)

UGR

UGR axial	11.4
UGR transversal	10.7
X=4H Y=8H	S=0.25H
Reflection factor	70/50/20

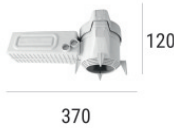
OPTICAL

C0/C180 optics	15°
Light distribution simmetry	Symmetrical



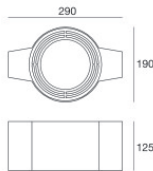
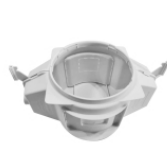
Outer casing
 installation position: ceiling; type of installation: masonry L=200mm, H=113mm, D=137mm.
 Material: polypropylene, colour: white.

Code
89373



Outer casing
 installation position: ceiling; type of installation: masonry L=370mm, H=120mm, D=200mm.
 Material: polypropylene, colour: white.

Code
89374



Outer casing - (to be completed with universal grill 99750)
 installation position: ceiling; type of installation: masonry L=290mm, H=125mm, D=190mm

Code
99749



Accessories for outer casings - Universal grille for outer casing 99749

Code
99750