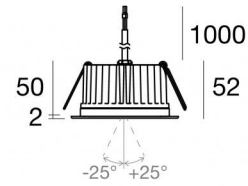
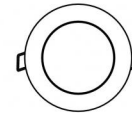




Downlights | 1 arrayLED 9 W DC 24 V | CRI 80  
82453M60



86



Ø97

Technical data	
Type	Encasement with flange
Installation position	Ceiling
Installation environment	Outdoor
Light Source	LED
Circuit structure	arrayLED
Optics	60°
Light emission direction	downward
Nominal power	9 W DC
Source lumens	1265 lm
Input voltage range	24 V
CCT / Tone	2700 K
Colour rendering index	80 Ra
C.C. / C.V.	CV
Safety class	3
IP	IP67
IK	IK10
Glow wire test	850°
Direct mounting on normally flammable surfaces	Yes
CE	Yes
Driver included	No
C.V. - C.C. Converter	Converter 24V included
Dimmable article	DALI - 1-10V
Directional	No
Tilting	Yes
total angle (vertical plane)	50 °
Walk-over	No
Drive-over	No
Cable included	Yes
Cable length	1 m
Resin potting	Yes
Type of light emission	Single emission
Net weight	0.5 Kg
Electrostatic discharge protection	No
Surge protection	No
Optics technology	Honey comb
Product technological characteristics	Acquastop

#### Finishing casing

Material	Die-cast Aluminium EN AB - 46100
Colour	black
Processing	Open pore anodizing + Powder Coating

#### Finishing diffuser

Material	Extra clear glass - Tempered
Colour	transparent
Processing	Silk-screening

#### Finishing flange

Material	AISI 316L steel
Colour	steel
Processing	Brushing

#### Electronics



89488  
On/Off Driver 190~250V AC / 180~275V DC 15 W (1 art.)



89179  
On/Off Driver 198~264V AC 24 W (1 - 2 art.)



89359  
On/Off Driver 198~264V AC / 180~275V DC 48 W (1 - 5 art.)



99331  
On/Off Driver 198~264V AC / 176~275V DC 150 W (1 - 16 art.)



99660  
DALI - 1-10V Controller 24V DC 216 W (- art.)



C-E500023  
DALI - 1-10V - Push and Simply Dim Controller 8~53V DC 576 W (- art.)

#### Cables Electrification

Cable connector	No
-----------------	----



## Downlights | 1 arrayLED 9 W DC 24 V | CRI 80 | Base 82453M60

Single emission recessed downlights for outdoor application. The super warm white LED light source is composed of 1 arrayed LEDs with CCT of 2700 K and a CRI 80; the source luminous flux is 1265 lm, with a 140.6 lm/W nominal luminous efficacy.

The device body is made of die-cast aluminium en ab - 46100 and features a black finish, processed by means of open pore anodizing + powder coating; the diffuser is made of extra clear glass - tempered with a silk-screening treatment. The ingress protection degree is IP67; the total weight is of 0.5 kg.

The total absorbed power is 9 W. The power supply cable is included and features a 1 m length.

The device features protection class III and can be ceiling-mounted, with a 86 mm diameter hole (in plasterboard) with an outer casing, code 99749(for concrete or masonry).

Compliant with the EN 60598-1 standard and its specific provisions.



Distance [m]	Cone diameter [m]	illuminance [lx]
0.5	0.45 0.46	E(0°) 3964 E(C90) 24.4° 1500 E(C0) 24.8° 1483
1.0	0.91 0.92	E(0°) 991 E(C90) 24.4° 375 E(C0) 24.8° 371
1.5	1.36 1.39	E(0°) 440 E(C90) 24.4° 167 E(C0) 24.8° 165
2.0	1.81 1.85	E(0°) 248 E(C90) 24.4° 94 E(C0) 24.8° 93
2.5	2.27 2.31	E(0°) 159 E(C90) 24.4° 60 E(C0) 24.8° 59
3.0	2.72 2.77	E(0°) 110 E(C90) 24.4° 42 E(C0) 24.8° 41

— C0/C180 (Half-peak divergence: 49.6°)  
— C90/C270 (Half-peak divergence: 48.8°)

### Energy efficiency class

This product contains a light source of energy efficiency class E.

### Illuminotechnical Features

Light Output Ratio (LOR)	51 %
Source lumens	1265 lm
Delivered lumens	646 lm
Consumption	9 W
Luminaire efficacy	71 lm/W
Colour temperature	2700 K
Standard Deviation of Colour Matching	2 Step MacAdam
Colour rendering index	80 Ra

Standard Operating Ambient Temperature -20 / +50°C

Ordinary temperature on the glass 40°C

### LED Life / Failure Ratio

L70 B10 C0 252000h (at Tj 65 Ta 25 )

### UGR

UGR axial	16.3
UGR transversal	16.3
X=4H   Y=8H	S=0.25H
Reflection factor	70/50/20

### OPTICAL

C0/C180 optics	49°
Light distribution simmetry	Symmetrical

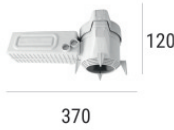


Orma\_CJ | Downlights | Accessories  
**82453M60**



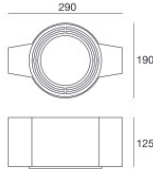
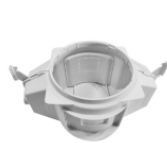
Outer casing  
 installation position: ceiling; type of installation: masonry L=200mm, H=113mm, D=137mm.  
 Material:polypropylene, colour:white.

**Code**  
89373



Outer casing  
 installation position: ceiling; type of installation: masonry L=370mm, H=120mm, D=200mm.  
 Material:polypropylene, colour:white.

**Code**  
89374



Outer casing - (to be completed with universal grill 99750)  
 installation position: ceiling; type of installation: masonry L=290mm, H=125mm, D=190mm

**Code**  
99749



Accessories for outer casings - Universal grille for outer casing 99749

**Code**  
99750