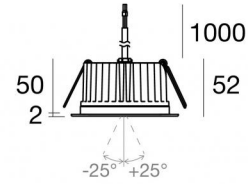




Downlights | 1 arrayLED 8 W DC 220 mA | CRI 80  
82452W60



86



Ø97

Technical data	
Type	Encasement with flange
Installation position	Ceiling
Installation environment	Outdoor
Light Source	LED
Circuit structure	arrayLED
Optics	60°
Light emission direction	downward
Nominal power	8 W DC
Source lumens	1182 lm
Input voltage range	220mA
CCT / Tone	3000 K
Colour rendering index	80 Ra
C.C. / C.V.	CC
Safety class	3
IP	IP67
IK	IK10
Glow wire test	850°
Direct mounting on normally flammable surfaces	Yes
CE	Yes
Driver included	No
Dimmable article	DALI - 1-10V
Directional	No
Tilting	Yes
total angle (vertical plane)	50 °
Walk-over	No
Drive-over	No
Cable included	Yes
Cable length	1 m
Resin potting	Yes
Type of light emission	Single emission
Net weight	0.5 Kg
Electrostatic discharge protection	No
Surge protection	No
Optics technology	Honey comb
Product technological characteristics	Acquastop

#### Finishing casing

Material	Die-cast Aluminium EN AB - 46100
Colour	black
Processing	Open pore anodizing + Powder Coating

#### Finishing diffuser

Material	Extra clear glass - Tempered
Colour	transparent
Processing	Silk-screening

#### Finishing flange

Material	AISI 316L steel
Colour	steel
Processing	Brushing

#### Electronics



99342  
On/Off Driver 198-264V AC (1 art.)

#### Cables Electrification

Cable connector	No
-----------------	----



## Downlights | 1 arrayLED 8 W DC 220 mA | CRI 80 | Base 82452W60

Single emission recessed downlights for outdoor application. The warm white LED light source is composed of 1 arrayLEDs with CCT of 3000 K and a CRI 80; the source luminous flux is 1182 lm, with a 147.8 lm/W nominal luminous efficacy.

The device body is made of die-cast aluminium en ab - 46100 and features a black finish, processed by means of open pore anodizing + powder coating; the diffuser is made of extra clear glass - tempered with a silk-screening treatment. The ingress protection degree is IP67; the total weight is of 0.5 kg. The power supply driver is not provided and is to be ordered separately.

The total absorbed power is 8 W. The power supply cable is included and features a 1 m length.

The device features protection class III and can be ceiling-mounted, with a 86 mm diameter hole (in plasterboard) with an outer casing, code 99749(for concrete or masonry).

Compliant with the EN 60598-1 standard and its specific provisions.



Distance [m]	Cone diameter [m]	illuminance [lx]
0.5	0.45 0.46	E(0°) 3732 E(C90) 24.4° 1412 E(C0) 24.8° 1396
1.0	0.91 0.92	E(0°) 933 E(C90) 24.4° 353 E(C0) 24.8° 349
1.5	1.36 1.39	E(0°) 415 E(C90) 24.4° 157 E(C0) 24.8° 155
2.0	1.81 1.85	E(0°) 233 E(C90) 24.4° 88 E(C0) 24.8° 87
2.5	2.27 2.31	E(0°) 149 E(C90) 24.4° 56 E(C0) 24.8° 56
3.0	2.72 2.77	E(0°) 104 E(C90) 24.4° 39 E(C0) 24.8° 39

— C0/C180 (Half-peak divergence: 49.6°)  
— C90/C270 (Half-peak divergence: 48.8°)

### Energy efficiency class

This product contains a light source of energy efficiency class E.

### Illuminotechnical Features

Light Output Ratio (LOR)	51 %
Source lumens	1182 lm
Delivered lumens	608 lm
Consumption	8 W
Luminaire efficacy	76 lm/W
Colour temperature	3000 K
Standard Deviation of Colour Matching	2 Step MacAdam
Colour rendering index	80 Ra
Standard Operating Ambient Temperature	-20 / +50°C
Ordinary temperature on the glass	40°C

### LED Life / Failure Ratio

L70 B10 C0 252000h (at Tj 65 Ta 25 )

### UGR

UGR axial	16.1
UGR transversal	16.1
X=4H   Y=8H	S=0.25H
Reflection factor	70/50/20

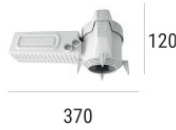
### OPTICAL

C0/C180 optics	49°
Light distribution simmetry	Symmetrical



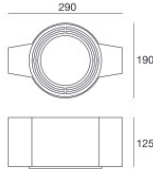
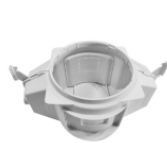
Outer casing  
 installation position: ceiling; type of installation: masonry L=200mm, H=113mm, D=137mm.  
 Material: polypropylene, colour: white.

**Code**  
89373



Outer casing  
 installation position: ceiling; type of installation: masonry L=370mm, H=120mm, D=200mm.  
 Material: polypropylene, colour: white.

**Code**  
89374



Outer casing - (to be completed with universal grill 99750)  
 installation position: ceiling; type of installation: masonry L=290mm, H=125mm, D=190mm

**Code**  
99749



Accessories for outer casings - Universal grille for outer casing 99749

**Code**  
99750