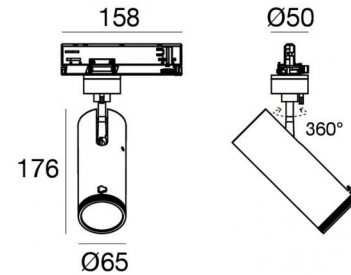




Projectors | 198-264 V  
1 arrayLED 23 W DC - 29 W AC | CRI 98  
**82447W85**



Technical data	
Type	Track
Installation position	Ceiling
Installation environment	Indoor
Light Source	LED
Circuit structure	arrayLED
Optics	Adjustable Focus
Light emission direction	frontal
Nominal power	23 W DC
Total Power	29 W
Source lumens	2892 lm
Nominal input voltage	220 - 240 V AC
Input voltage range	198 - 264 V AC
Frequency	50 - 60 Hz
CCT / Tone	3000 K
Colour rendering index	98 Ra
C.C. / C.V.	AC
Safety class	2
IP	IP20
Glow wire test	850°
Direct mounting on normally flammable surfaces	Yes
CE	Yes
Driver included	Driver
Dimmable article	Dimming on Board
Directional	Swivelling
total angle (vertical plane)	90 °
total angle (horizontal plane)	360 °
Tilting	No
Walk-over	No
Drive-over	No
Cable included	No
Resin potting	No
Type of light emission	Single emission
Net weight	0.612 Kg
Electrostatic discharge protection	Yes
Surge protection	2 KV

Finishing casing	
Material	Die-cast Aluminium EN AB - 46100
Colour	Black
Processing	Powder coating



Projectors | 198-264 V | 1 arrayLED 23 W DC - 29 W AC | CRI 98 | Angle Max  
82447W85

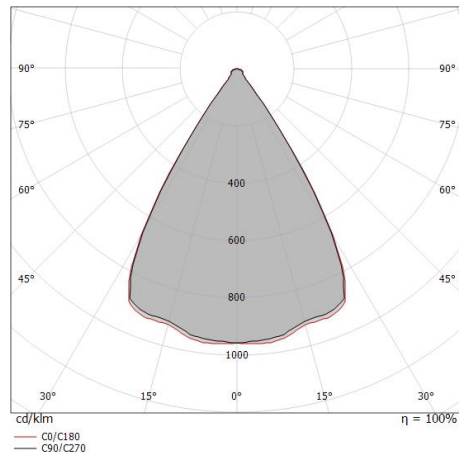
Single emission projectors for indoor application. The warm white LED light source with a adjustable focus light distribution is composed of 1 arrayed LEDs with CCT of 3000 K and a CRI 98; the source luminous flux is 2892 lm, with a 125.7 lm/W nominal luminous efficacy.

The device body is made of die-cast aluminium en ab - 46100 and features a black finish, processed by means of powder coating. The ingress protection degree is IP20; the total weight is of 0.612 kg.

The total absorbed power is 29 W.

The device features protection class II and can be ceiling-mounted.

Compliant with the EN 60598-1 standard and its specific provisions.



Distance [m]	Cone diameter [m]	illuminance [lx]
0.5	0.63	E(0°) 4792 E(C90) 1463 E(C0) 1473
1.0	1.26	E(0°) 1198 E(C90) 366 E(C0) 368
1.5	1.89	E(0°) 532 E(C90) 163 E(C0) 164
2.0	2.52	E(0°) 300 E(C90) 91 E(C0) 92
2.5	3.15	E(0°) 192 E(C90) 59 E(C0) 59
3.0	3.78	E(0°) 133 E(C90) 41 E(C0) 41

Distance [m] Cone diameter [m] illuminance [lx]

— C0/C180 (Half-peak divergence: 64.6°)  
— C90/C270 (Half-peak divergence: 64.4°)

### Energy efficiency class

This product contains a light source of energy efficiency class E.

### Illuminotechnical Features

Light Output Ratio (LOR)	43 %
Source lumens	2892 lm
Delivered lumens	1251 lm
Consumption	29 W
Luminaire efficacy	43 lm/W
Colour temperature	3000 K
Standard Deviation of Colour Matching	2 Step MacAdam
Colour rendering index	98 Ra
Black Body Locus	On
Standard Operating Ambient Temperature	-20 / +50°C
Ordinary temperature on the glass	40°C

### LED Life / Failure Ratio

L70 B10 C0 252000h (at Tj 65 Ta 25)

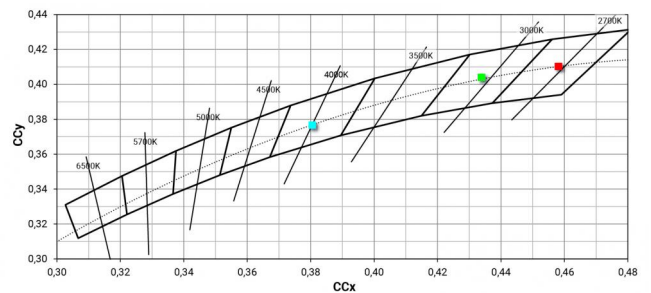
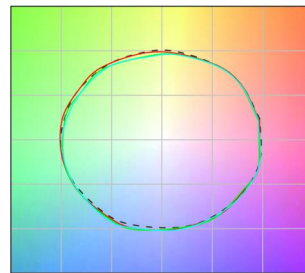
### UGR

UGR axial	23.8
UGR transversal	23.9
X=4H   Y=8H	S=0.25H
Reflection factor	70/50/20

### OPTICAL

C0/C180 optics	64°
Light distribution simmetry	Symmetrical

### COLOR VECTOR GRAPHIC





Projectors | 198-264 V | 1 arrayLED 23 W DC - 29 W AC | CRI 98 | Angle Min

**82447W85**

Single emission projectors for indoor application. The warm white LED light source with an adjustable focus light distribution is composed of 1 arrayed LEDs with CCT of 3000 K and a CRI 98; the source luminous flux is 2892 lm, with a 125.7 lm/W nominal luminous efficacy.

The device body is made of die-cast aluminium en ab - 46100 and features a black finish, processed by means of powder coating. The ingress protection degree is IP20; the total weight is of 0.612 kg.

The total absorbed power is 29 W.

The device features protection class II and can be ceiling-mounted.

Compliant with the EN 60598-1 standard and its specific provisions.

### Energy efficiency class

This product contains a light source of energy efficiency class E.

### Illuminotechnical Features

Light Output Ratio (LOR)	18 %
Source lumens	2892 lm
Delivered lumens	535 lm
Consumption	29 W
Luminaire efficacy	18 lm/W
Colour temperature	3000 K
Standard Deviation of Colour Matching	2 Step MacAdam
Colour rendering index	98 Ra
Black Body Locus	On
Standard Operating Ambient Temperature	-20 / +50°C
Ordinary temperature on the glass	40°C

### LED Life / Failure Ratio

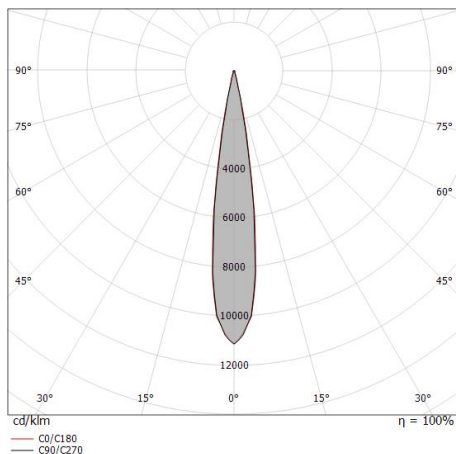
L70 B10 C0 252000h (at Tj 65 Ta 25 )

### UGR

UGR axial	13.9
UGR transversal	14.3
X=4H   Y=8H	S=0.25H
Reflection factor	70/50/20

### OPTICAL

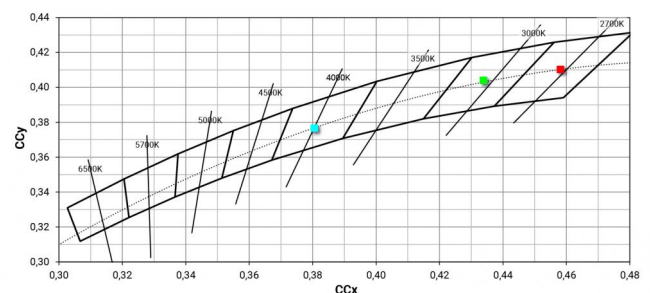
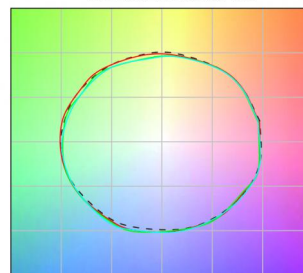
C0/C180 optics	16°
Light distribution symmetry	Symmetrical

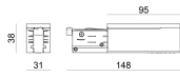


Distance [m]	Cone diameter [m]	illuminance [lx]
0.5	0.14 0.15	E(0°) 23793 E(C90) 8.1° 11611 E(C0) 8.3° 11589
1.0	0.28 0.29	E(0°) 5948 E(C90) 8.1° 2903 E(C0) 8.3° 2897
1.5	0.43 0.44	E(0°) 2644 E(C90) 8.1° 1290 E(C0) 8.3° 1288
2.0	0.57 0.58	E(0°) 1487 E(C90) 8.1° 726 E(C0) 8.3° 724
2.5	0.71 0.73	E(0°) 952 E(C90) 8.1° 464 E(C0) 8.3° 464
3.0	0.85 0.88	E(0°) 661 E(C90) 8.1° 323 E(C0) 8.3° 322

— C0/C180 (Half-peak divergence: 16.6°)  
— C90/C270 (Half-peak divergence: 16.2°)

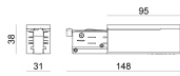
### COLOR VECTOR GRAPHIC





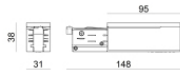
Power supply - White Right power supply header (9001/W)  
Material:PC, colour:white.

**Code**  
81033



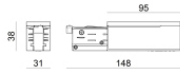
Power supply - White left power supply header (9002/W)  
Material:PC, colour:white.

**Code**  
81036



Power supply - Black left power supply header (9002/B)  
Material:PC, colour:black.

**Code**  
81037



Power supply - Black Right power supply header (9001/B)  
Material:PC, colour:black.

**Code**  
81034



Closing cap - White end cap 9004/W  
Material:PC, colour:white.

**Code**  
80999



Closing cap - Black end cap 9004/B  
Material:PC, colour:black.

**Code**  
81000



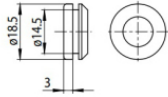
Closing cap - Recessed white end cap 9004-R/W  
Material:PC, colour:white.

**Code**  
81002



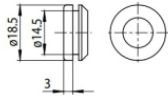
Closing cap - Recessed black end cap 9004-R/B  
Material:PC, colour:black.

**Code**  
81003



Closing cap - White gasket (S-9001/115-W)  
Material:white.

**Code**  
81084



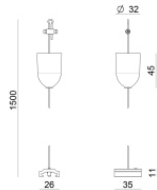
Closing cap - Black gasket (S-9001/115-B)  
Material:black, colour:black.

**Code**  
81085



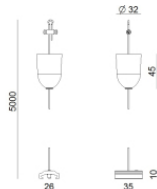
Ceiling rose - 1.5m white pendant luminaire kit + bracket (9000-KIT5-1,5-W)  
Material:plastic, colour:white.

**Code**  
81012



Ceiling rose - 1.5m black pendant luminaire kit + bracket ((9000-KIT5-1,5-B)  
Material:plastic, colour:black.

**Code**  
81014



Ceiling rose - 5m white pendant luminaire kit + bracket (9000-KIT5-5-W)  
Material:plastic, colour:white.

**Code**  
81013



Ceiling rose - 5m black pendant luminaire kit + bracket (9000-KIT5-5-B)  
Material:plastic, colour:black.

**Code**  
81015



Bracket - Anodized fixing bracket (S-9000/131)  
L=35mm, H=14mm, D=24mm.  
Material:Aluminium, colour:translucent.

**Finish**    **Code**  
Anod. Al.    81086



Bracket - Anodized stiffening bracket (S-9000/333)  
L=180mm, H=24mm, D=26mm.

Material:Aluminium, colour:Anodised Aluminum, processing:Anodisation.

**Finish**    **Code**  
Anod. Al.    81024



		<p>Bracket - White stiffening bracket (S-9000/333-W) L=180mm, H=24mm, D=20mm. Material:Aluminium, colour:white RAL 9010, processing:Coating.</p>	<table border="1"> <thead> <tr> <th>Finish</th> <th>Code</th> </tr> </thead> <tbody> <tr> <td>White</td> <td>81025</td> </tr> </tbody> </table>	Finish	Code	White	81025
Finish	Code						
White	81025						
		<p>Bracket - Black stiffening bracket (S-9000/333-B) L=180mm, H=24mm, D=20mm. Material:Aluminium, colour:black RAL 9005, processing:Coating.</p>	<table border="1"> <thead> <tr> <th>Finish</th> <th>Code</th> </tr> </thead> <tbody> <tr> <td>Black</td> <td>81026</td> </tr> </tbody> </table>	Finish	Code	Black	81026
Finish	Code						
Black	81026						
		<p>Bracket - White fixing bracket (S-9000/131-W) L=35mm, H=14mm, D=24mm. Material:Aluminium, colour:white, processing:Coating.</p>	<table border="1"> <thead> <tr> <th>Finish</th> <th>Code</th> </tr> </thead> <tbody> <tr> <td>White</td> <td>81087</td> </tr> </tbody> </table>	Finish	Code	White	81087
Finish	Code						
White	81087						
		<p>Bracket - Black fixing bracket (S-9000/131-B) L=35mm, H=14mm, D=24mm. Material:Aluminium, colour:Black, processing:Coating.</p>	<table border="1"> <thead> <tr> <th>Finish</th> <th>Code</th> </tr> </thead> <tbody> <tr> <td>Black</td> <td>81088</td> </tr> </tbody> </table>	Finish	Code	Black	81088
Finish	Code						
Black	81088						
		<p>Junction - White electrical junction - internal (9003/W) Type linear. Material:PC, colour:white.</p>	<table border="1"> <thead> <tr> <th>Finish</th> <th>Code</th> </tr> </thead> <tbody> <tr> <td>White</td> <td>81039</td> </tr> </tbody> </table>	Finish	Code	White	81039
Finish	Code						
White	81039						
		<p>Junction - Black electrical junction - internal (9003/B) Type linear. Material:PC, colour:black.</p>	<table border="1"> <thead> <tr> <th>Finish</th> <th>Code</th> </tr> </thead> <tbody> <tr> <td>Black</td> <td>81040</td> </tr> </tbody> </table>	Finish	Code	Black	81040
Finish	Code						
Black	81040						
		<p>Junction - White power supply junction - central (9010/W) Type linear. Material:PC, colour:white.</p>	<table border="1"> <thead> <tr> <th>Finish</th> <th>Code</th> </tr> </thead> <tbody> <tr> <td>White</td> <td>81042</td> </tr> </tbody> </table>	Finish	Code	White	81042
Finish	Code						
White	81042						
		<p>Junction - White L junction - internal (9011/W) Type linear. Material:PC, colour:white.</p>	<table border="1"> <thead> <tr> <th>Finish</th> <th>Code</th> </tr> </thead> <tbody> <tr> <td>White</td> <td>81045</td> </tr> </tbody> </table>	Finish	Code	White	81045
Finish	Code						
White	81045						



		<p>Junction - White L junction - external (9012/W) Type linear. Material:PC, colour:white.</p>	<p><b>Finish</b> White</p>	<p><b>Code</b> 81048</p>
		<p>Junction - Flexible white junction (9018/W) Type flexible curve. Material:PC, colour:white.</p>	<p><b>Finish</b> White</p>	<p><b>Code</b> 81066</p>
		<p>Junction - White X junction (9017/W) Type linear. Material:PC, colour:white.</p>	<p><b>Finish</b> White</p>	<p><b>Code</b> 81063</p>
		<p>Junction - Left white T junction - external (9013/W) Type linear. Material:PC, colour:white.</p>	<p><b>Finish</b> White</p>	<p><b>Code</b> 81051</p>
		<p>Junction - Right white T junction - external (9014/W) Type linear. Material:PC, colour:white.</p>	<p><b>Finish</b> White</p>	<p><b>Code</b> 81054</p>
		<p>Junction - Left white T junction - internal (9015/W) Type linear. Material:PC, colour:white.</p>	<p><b>Finish</b> White</p>	<p><b>Code</b> 81057</p>
		<p>Junction - Right White T junction - internal (9016/W) Type linear. Material:PC, colour:white.</p>	<p><b>Finish</b> White</p>	<p><b>Code</b> 81060</p>
		<p>Junction - Black power supply junction - centrale (9010/B) Type linear. Material:PC, colour:black.</p>	<p><b>Finish</b> Black</p>	<p><b>Code</b> 81043</p>



		<p>Junction - Black L junction - internal (9011/B) Type linear. Material:PC, colour:black.</p>	<p><b>Finish</b> Black</p>	<p><b>Code</b> 81046</p>
		<p>Junction - Black L junction - external (9012/B) Type linear. Material:PC, colour:black.</p>	<p><b>Finish</b> Black</p>	<p><b>Code</b> 81049</p>
		<p>Junction - Flexible black junction (9018/B) Type flexible curve. Material:PC, colour:black.</p>	<p><b>Finish</b> Black</p>	<p><b>Code</b> 81067</p>
		<p>Junction - Black X junction (9017/B) Type linear. Material:PC, colour:black.</p>	<p><b>Finish</b> Black</p>	<p><b>Code</b> 81064</p>
		<p>Junction - Black left T junction - external (9013/B) Type linear. Material:PC, colour:black.</p>	<p><b>Finish</b> Black</p>	<p><b>Code</b> 81052</p>
		<p>Junction - Right black T junction - external (9014/B) Type linear. Material:PC, colour:black.</p>	<p><b>Finish</b> Black</p>	<p><b>Code</b> 81055</p>
		<p>Junction - Left black T junction - internal (9015/B) Type linear. Material:PC, colour:black.</p>	<p><b>Finish</b> Black</p>	<p><b>Code</b> 81058</p>
		<p>Junction - Right black T junction - internal (9016/B) Type linear. Material:PC, colour:black.</p>	<p><b>Finish</b> Black</p>	<p><b>Code</b> 81061</p>





	<p>Suspensions - 1.5m white pendant luminaires kit (9000-KIT3-1,5-W) Material:plastic, colour:white.</p>	<p><b>Code</b> <u>81006</u></p>
	<p>Suspensions - 5m white pendant luminaires kit (9000-KIT3-5-W) Material:plastic, colour:white.</p>	<p><b>Code</b> <u>81007</u></p>
	<p>Suspensions - 1.5m black pendant luminaires kit (9000-KIT3-1,5-B) Material:plastic, colour:black.</p>	<p><b>Code</b> <u>81008</u></p>
	<p>Suspensions - 5m black pendant luminaires kit (9000-KIT3-5-B) Material:plastic, colour:black.</p>	<p><b>Code</b> <u>81009</u></p>
	<p>Suspensions - White rigid suspension clip (S-9000-P2-W) Material:plastic, colour:white.</p>	<p><b>Code</b> <u>81018</u></p>
	<p>Suspensions - Black rigid suspension clip (S-9000-P2-B) Material:plastic, colour:black.</p>	<p><b>Code</b> <u>81019</u></p>
	<p>Suspensions - White rigid suspension 1m (S-9000-P3-W) Material:plastic, colour:white.</p>	<p><b>Code</b> <u>81021</u></p>
	<p>Suspensions - Black rigid suspension 1m (S-9000-P3-B) Material:plastic, colour:black.</p>	<p><b>Code</b> <u>81022</u></p>



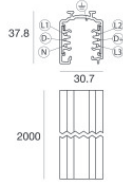
		<p>Cable cover - White recessed cover (S-9001-R/6-W) Material:PC, colour:white.</p>	<p><b>Code</b> <u>81069</u></p>
		<p>Cable cover - White cover for recessed junction (S-9010-R/6-W) Material:PC, colour:white.</p>	<p><b>Code</b> <u>81072</u></p>
		<p>Cable cover - White cover for recessed L junction (S-9011-R/6-W) Material:PC, colour:white.</p>	<p><b>Code</b> <u>81075</u></p>
		<p>Cable cover - White cover for recessed T junction (S-9013-R/6-W) Material:PC, colour:white.</p>	<p><b>Code</b> <u>81078</u></p>
		<p>Cable cover - White cover for recessed X junction (S-9017-R/6-W) Material:PC, colour:white.</p>	<p><b>Code</b> <u>81081</u></p>
		<p>Cable cover - Black recessed cover (S-9001-R/6-B) Material:PC, colour:black.</p>	<p><b>Code</b> <u>81070</u></p>
		<p>Cable cover - Black cover for recessed junction (S-9010-R/6-B) Material:PC, colour:black.</p>	<p><b>Code</b> <u>81073</u></p>
		<p>Cable cover Material:PC, colour:black.</p>	<p><b>Code</b> <u>81076</u></p>



		<p>Cable cover - Black cover for recessed T junction (S-9013-R/6-B) Material:PC, colour:black.</p>	<p><b>Code</b> <u>81079</u></p>
		<p>Cable cover - Black cover for recessed X junction (S-9017-R/6-B) Material:PC, colour:black.</p>	<p><b>Code</b> <u>81082</u></p>
		<p>Cable cover Material:white.</p>	<p><b>Code</b> <u>83249</u></p>
		<p>Cable cover Material:black, colour:black.</p>	<p><b>Code</b> <u>83250</u></p>
		<p>White three-phase/DALI adapter (9009/W)</p>	<p><b>Code</b> <u>81094</u></p>
		<p>White three-phase adapter (9009-4/W)</p>	<p><b>Code</b> <u>81091</u></p>
		<p>Black three-phase/DALI adapter (9009/B)</p>	<p><b>Code</b> <u>81095</u></p>
		<p>Black three-phase adapter (9009-4/B)</p>	<p><b>Code</b> <u>81093</u></p>



	Tool - Cutter S-9000/T	<b>Code</b>		
		81005		
		Track - Three-phase Recessed White DALI Track, 1 m (9000-1/W-R) Length: 1000mm; Type of track: Standard. Material:Aluminium, colour:White, processing:Coating.	<b>Finish</b>	<b>Code</b>
			White	80990
		Track - Three-phase Recessed White DALI Track, 2 m (9000-2/W-R) Length: 2000mm; Type of track: Standard. Material:Aluminium, colour:White, processing:Coating.	<b>Finish</b>	<b>Code</b>
			White	80991
		Track - Three-phase Recessed White DALI Track, 3 m (9000-3/W-R) Length: 3000mm; Type of track: Standard. Material:Aluminium, colour:White, processing:Coating.	<b>Finish</b>	<b>Code</b>
			White	80992
		Track - Three-phase Recessed Grey DALI Track, 1 m (9000-1/B-R) Length: 1000mm; Type of track: Standard. Material:Aluminium, colour:Black, processing:Coating.	<b>Finish</b>	<b>Code</b>
			Black	80993
		Track - Three-phase Recessed Black DALI Track, 2 m (9000-1/B-R) Length: 2000mm; Type of track: Standard. Material:Aluminium, colour:Black, processing:Coating.	<b>Finish</b>	<b>Code</b>
			Black	80994
		Track - Three-phase Recessed Black DALI Track, 3 m (9000-3/B-R) Length: 3000mm; Type of track: Standard. Material:Aluminium, colour:Black, processing:Coating.	<b>Finish</b>	<b>Code</b>
			Black	80995
		Track Length: 1000mm; Type of track: Standard. Material:Aluminium, colour:White, processing:Coating.	<b>Finish</b>	<b>Code</b>
			White	83336

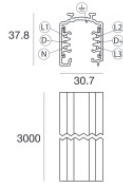


Track

Length: 2000mm; Type of track: Standard.

Material:Aluminium, colour:White, processing:Coating.

Finish	Code
White	83337

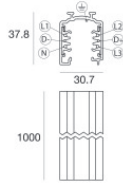
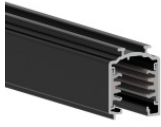


Track

Length: 3000mm; Type of track: Standard.

Material:Aluminium, colour:White, processing:Coating.

Finish	Code
White	83338

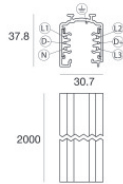
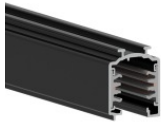


Track

Length: 1000mm; Type of track: Standard.

Material:Aluminium, colour:Black, processing:Coating.

Finish	Code
Black	83339

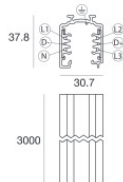
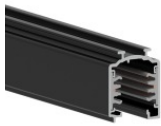


Track

Length: 2000mm; Type of track: Standard.

Material:Aluminium, colour:Black, processing:Coating.

Finish	Code
Black	83340



Track

Length: 3000mm; Type of track: Standard.

Material:Aluminium, colour:Black, processing:Coating.

Finish	Code
Black	83341