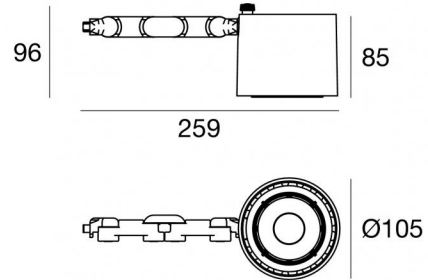


Navata_Optus



Projectors | 1 arrayLED 35 W DC 950 mA | CRI 98
82397W60










Technical data	
Type	Surface
Installation position	Wall lights - Ceiling - Floor
Installation environment	Indoor
Light Source	LED
Circuit structure	arrayLED
Optics	Medium Wide Flood
Light emission direction	frontal
Nominal power	35 W DC
Source lumens	4416 lm
Input voltage range	950mA
CCT / Tone	3000 K
Colour rendering index	98 Ra
C.C. / C.V.	CC
Safety class	3
IP	IP20
Glow wire test	850°
Direct mounting on normally flammable surfaces	Yes
CE	Yes
Driver included	No
Dimmable article	DALI - 1-10V
Directional	Swivelling
total angle (vertical plane)	180 °
total angle (horizontal plane)	360 °
Tilting	No
Walk-over	No
Drive-over	No
Cable included	Yes
Cable length	0,2 m
Resin potting	No
Type of light emission	Single emission
Net weight	0.800 Kg
Electrostatic discharge protection	No
Surge protection	No

Finishing casing

Material	Aluminium
Colour	White
Processing	Coating

Electronics

	99146 On/Off Driver 198~264V AC (1 art.)
	99330 DALI - Push and Simply Dim Multi Power 198~264V AC / 176~275V DC (1 art.)
	99938 Multi Power 198~264V AC / 176~264V DC (1 art.)
	99936 DALI-2 Controller (1 art.)
	99948 Multi Power 198~264V AC / 176~264V DC (1 art.)
	83174 Bluetooth Controller (1 art.)
	C-E100009 Multi Power 198~264V AC / 180~275V DC (1 art.)



Projectors | 1 arrayLED 35 W DC 950 mA | CRI 98 | Base
82397W60

Single emission projectors for indoor application. The warm white LED light source with a medium wide flood light distribution is composed of 1 arrayed LEDs with CCT of 3000 K and a CRI 98; the source luminous flux is 4416 lm, with a 126.2 lm/W nominal luminous efficacy.

The device body is made of aluminium and features a white finish, processed by means of coating. The ingress protection degree is IP20; the total weight is of 0.800 kg. The power supply driver is not provided and is to be ordered separately.

The total absorbed power is 35 W. The power supply cable is included and features a 0,2 m length.

The device features protection class III and can be wall lights, ceiling or floor-mounted.

Compliant with the EN 60598-1 standard and its specific provisions.

Energy efficiency class

This product contains a light source of energy efficiency class E.

Illuminotechnical Features

Light Output Ratio (LOR)	76 %
Source lumens	4416 lm
Delivered lumens	3388 lm
Consumption	34 W
Luminaire efficacy	99 lm/W
Colour temperature	3000 K
Standard Deviation of Colour Matching	2 Step MacAdam
Colour rendering index	98 Ra
Black Body Locus	On
Standard Operating Ambient Temperature	-20 / +50°C
Ordinary temperature on the glass	40°C

LED Life / Failure Ratio

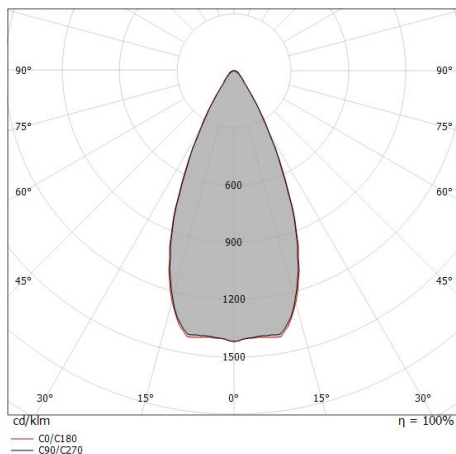
L70 B10 C0 252000h (at Tj 65 Ta 25)

UGR

UGR axial	24.7
UGR transversal	24.8
X=4H Y=8H	S=0.25H
Reflection factor	70/50/20

OPTICAL

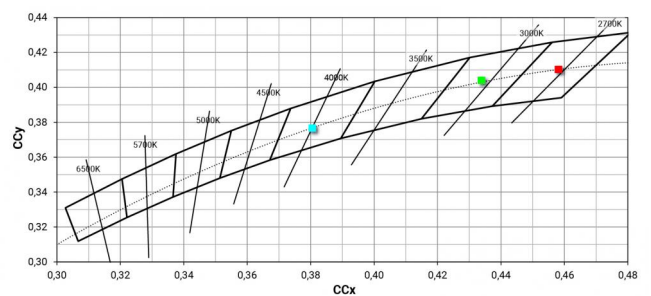
C0/C180 optics	48°
Light distribution symmetry	Symmetrical

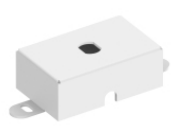


Distance [m]	Cone diameter [m]	illuminance [lx]
0.5	0.44 0.45	E(0°) 19243 E(C90) 7357 E(C0) 7380
1.0	0.89 0.89	E(0°) 4811 E(C90) 1839 E(C0) 1845
1.5	1.33 1.34	E(0°) 2138 E(C90) 817 E(C0) 820
2.0	1.77 1.78	E(0°) 1203 E(C90) 460 E(C0) 461
2.5	2.22 2.23	E(0°) 770 E(C90) 294 E(C0) 295
3.0	2.66 2.67	E(0°) 535 E(C90) 204 E(C0) 205

— C0/C180 (Half-peak divergence: 48.0°)
— C90/C270 (Half-peak divergence: 47.8°)

COLOR VECTOR GRAPHIC





Fixing base - Base without power supply
Material:Iron, colour:White, processing:Coating.

Code
98588



Diffuser - Not compatible with 60° optics

Code
C-U300013



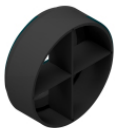
Anti-glare
Anti-glare Type: honeycomb louvre.
Material:Pom-C, colour:Black.

Code
C-U300014



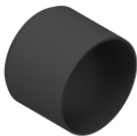
Anti-glare
Anti-glare Type: 45° cylindrical screen.
Material:Pom-C, colour:Black.

Code
C-U300030



Anti-glare
Anti-glare Type: cross louveres.
Material:Pom-C, colour:Black.

Code
C-U300031



Anti-glare
Anti-glare Type: cylindrical screen.
Material:Pom-C, colour:Black.

Code
C-U300029



Optics - SPOT
Light distribution: spot,Cover material: uv resistant polycarbonate

Code
C-U300015



Optics - FLOOD
Light distribution: flood,Cover material: ,uv resistant polycarbonate,uv resistant polycarbonate,uv resistant polycarbonate

Code
C-U300016



Optics - WIDE FLOOD

Light distribution: medium flood,Cover material: ,uv resistant polycarbonate,uv resistant polycarbonate,uv resistant polycarbonate

Code

C-U300017



Optics

Light distribution: adjustable,Cover material: ,aluminium

Code

C-U300034