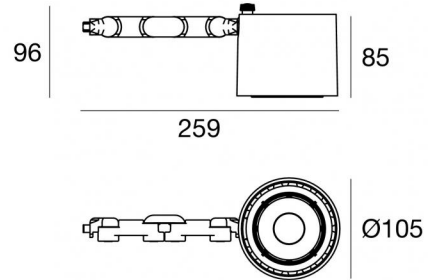


Navata_Optus



Projectors | 1 arrayLED 35 W DC 950 mA | CRI 98
82397W15



| Technical data | |
|--|----------------------------------|
| Type | Surface |
| Installation position | Wall lights - Ceiling - Floor |
| Installation environment | Indoor |
| Light Source | LED |
| Circuit structure | arrayLED |
| Optics | Spot |
| Light emission direction | frontal |
| Nominal power | 35 W DC |
| Source lumens | 4416 lm |
| Input voltage range | 950mA |
| CCT / Tone | 3000 K |
| Colour rendering index | 98 Ra |
| C.C. / C.V. | CC |
| Safety class | 3 |
| IP | IP20 |
| Glow wire test | 850° |
| Direct mounting on normally flammable surfaces | Yes |
| CE | Yes |
| Driver included | No |
| Dimmable article | DALI - 1-10V |
| Directional | Swivelling |
| total angle (vertical plane) | 180 ° |
| total angle (horizontal plane) | 360 ° |
| Tilting | No |
| Walk-over | No |
| Drive-over | No |
| Cable included | Yes |
| Cable length | 0,2 m |
| Resin potting | No |
| Type of light emission | Single emission |
| Net weight | 0.800 Kg |
| Electrostatic discharge protection | No |
| Surge protection | No |

Finishing casing

| | |
|------------|-----------|
| Material | Aluminium |
| Colour | White |
| Processing | Coating |

Electronics

| | |
|--|---|
| | 99146 On/Off Driver 198~264V AC |
| | 99330 DALI - Push and Simply Dim Multi Power 198~264V AC / 176~275V DC |
| | 99938 Multi Power 198~264V AC / 176~264V DC |
| | 99936 Push and Simply Dim - DALI-2 Controller |
| | 99948 Multi Power 198~264V AC / 176~264V DC |
| | 83174 Bluetooth Controller |
| | C-E100009 Multi Power 198~264V AC / 180~275V DC |



Projectors | 1 arrayLED 35 W DC 950 mA | CRI 98 | Base 82397W15

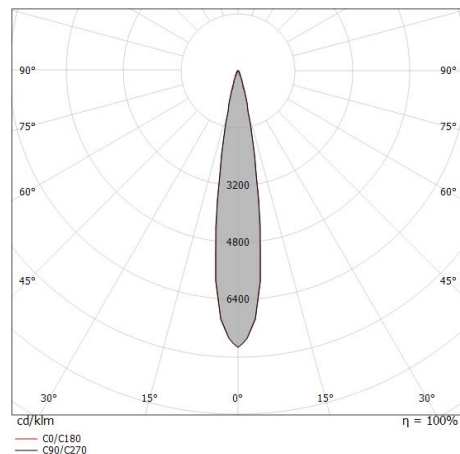
Single emission projectors for indoor application. The warm white LED light source with a spot light distribution is composed of 1 arrayed LEDs with CCT of 3000 K and a CRI 98; the source luminous flux is 4416 lm, with a 126.2 lm/W nominal luminous efficacy.

The device body is made of aluminium and features a white finish, processed by means of coating. The ingress protection degree is IP20; the total weight is of 0.800 kg. The power supply driver is not provided and is to be ordered separately.

The total absorbed power is 35 W. The power supply cable is included and features a 0,2 m length.

The device features protection class III and can be wall lights, ceiling or floor-mounted.

Compliant with the EN 60598-1 standard and its specific provisions.



| Distance [m] | Cone diameter [m] | illuminance [lx] |
|--------------|-------------------|---|
| 0.5 | 0.15 0.15 | E(0°) 109326 E(C90) 8.7° 53249 E(C0) 8.6° 53442 |
| 1.0 | 0.31 0.30 | E(0°) 27331 E(C90) 8.7° 13312 E(C0) 8.6° 13361 |
| 1.5 | 0.46 0.45 | E(0°) 12147 E(C90) 8.7° 5917 E(C0) 8.6° 5938 |
| 2.0 | 0.61 0.60 | E(0°) 6833 E(C90) 8.7° 3328 E(C0) 8.6° 3340 |
| 2.5 | 0.77 0.76 | E(0°) 4373 E(C90) 8.7° 2130 E(C0) 8.6° 2138 |
| 3.0 | 0.92 0.91 | E(0°) 3037 E(C90) 8.7° 1479 E(C0) 8.6° 1485 |

— C0/C180 (Half-peak divergence: 17.2°)
— C90/C270 (Half-peak divergence: 17.4°)

Energy efficiency class

This product contains a light source of energy efficiency class E.

Illuminotechnical Features

| | |
|--|----------------|
| Light Output Ratio (LOR) | 79 % |
| Source lumens | 4416 lm |
| Delivered lumens | 3532 lm |
| Consumption | 34 W |
| Luminaire efficacy | 103 lm/W |
| Colour temperature | 3000 K |
| Standard Deviation of Colour Matching | 2 Step MacAdam |
| Colour rendering index | 98 Ra |
| Black Body Locus | On |
| Standard Operating Ambient Temperature | -20 / +50°C |
| Ordinary temperature on the glass | 40°C |

LED Life / Failure Ratio

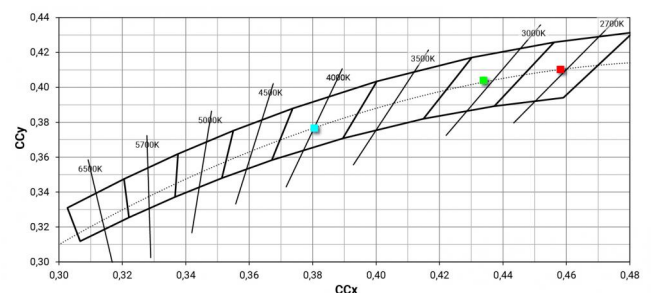
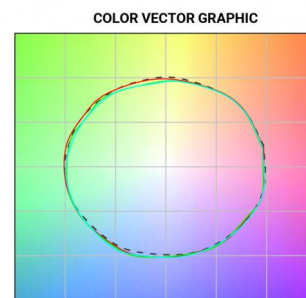
L70 B10 C0 252000h (at Tj 65 Ta 25)

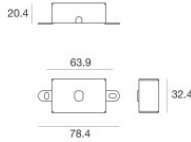
UGR

| | |
|-------------------|----------|
| UGR axial | 23.2 |
| UGR transversal | 23.2 |
| X=4H Y=8H | S=0.25H |
| Reflection factor | 70/50/20 |

OPTICAL

| | |
|-----------------------------|-------------|
| C0/C180 optics | 17° |
| Light distribution simmetry | Symmetrical |





Fixing base - Base without power supply
Material:Iron, colour:White, processing:Coating.

Code
98588



Diffuser - Not compatible with 60° optics

Code
C-U300013



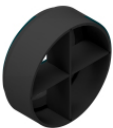
Anti-glare
Anti-glare Type: honeycomb louvre.
Material:Pom-C, colour:Black.

Code
C-U300014



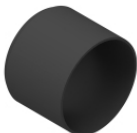
Anti-glare
Anti-glare Type: 45° cylindrical screen.
Material:Pom-C, colour:Black.

Code
C-U300030



Anti-glare
Anti-glare Type: cross louveres.
Material:Pom-C, colour:Black.

Code
C-U300031



Anti-glare
Anti-glare Type: cylindrical screen.
Material:Pom-C, colour:Black.

Code
C-U300029



Optics - SPOT
Light distribution: spot,Cover material: uv resistant polycarbonate

Code
C-U300015



Optics - FLOOD
Light distribution: flood,Cover material: uv resistant polycarbonate

Code
C-U300016



Optics - WIDE FLOOD
Light distribution: medium flood,Cover material: uv resistant polycarbonate

Code
C-U300017



Optics
Light distribution: adjustable,Cover material: aluminium

Code
C-U300034