

# Navata\_Optus



Projectors | 1 arrayLED 35 W DC 950 mA | CRI 98  
82397N30



Technical data	
Type	Surface
Installation position	Wall lights - Ceiling - Floor
Installation environment	Indoor
Light Source	LED
Circuit structure	arrayLED
Optics	Flood
Light emission direction	frontal
Nominal power	35 W DC
Source lumens	4695 lm
Input voltage range	950mA
CCT / Tone	4000 K
Colour rendering index	98 Ra
C.C. / C.V.	CC
Safety class	3
IP	IP20
Glow wire test	850°
Direct mounting on normally flammable surfaces	Yes
CE	Yes
Driver included	No
Dimmable article	DALI - 1-10V
Directional	Swivelling
total angle (vertical plane)	180 °
total angle (horizontal plane)	360 °
Tilting	No
Walk-over	No
Drive-over	No
Cable included	Yes
Cable length	0,2 m
Resin potting	No
Type of light emission	Single emission
Net weight	0.800 Kg
Electrostatic discharge protection	No
Surge protection	No

## Finishing casing

Material	Aluminium
Colour	White
Processing	Coating

## Electronics



99146  
On/Off Driver 198~264V AC (1 art.)



99330  
DALI - Push and Simply Dim Multi Power 198~264V AC / 176~275V DC (1 art.)



99938  
Multi Power 198~264V AC / 176~264V DC (1 art.)



99936  
DALI-2 Controller (1 art.)



99948  
Multi Power 198~264V AC / 176~264V DC (1 art.)



83174  
Bluetooth Controller (1 art.)



C-E100009  
Multi Power 198~264V AC / 180~275V DC (1 art.)



Projectors | 1 arrayLED 35 W DC 950 mA | CRI 98 | Base 82397N30

Single emission projectors for indoor application. The natural white LED light source with a flood light distribution is composed of 1 arrayed LEDs with CCT of 4000 K and a CRI 98; the source luminous flux is 4695 lm, with a 134.1 lm/W nominal luminous efficacy.

The device body is made of aluminium and features a white finish, processed by means of coating. The ingress protection degree is IP20; the total weight is of 0.800 kg. The power supply driver is not provided and is to be ordered separately.

The total absorbed power is 35 W. The power supply cable is included and features a 0,2 m length.

The device features protection class III and can be wall lights, ceiling or floor-mounted.

Compliant with the EN 60598-1 standard and its specific provisions.

### Energy efficiency class

This product contains a light source of energy efficiency class E.

### Illuminotechnical Features

Light Output Ratio (LOR)	79 %
Source lumens	4695 lm
Delivered lumens	3751 lm
Consumption	34 W
Luminaire efficacy	110 lm/W
Colour temperature	4000 K
Standard Deviation of Colour Matching	2 Step MacAdam
Colour rendering index	98 Ra
Black Body Locus	On
Standard Operating Ambient Temperature	-20 / +50°C
Ordinary temperature on the glass	40°C

### LED Life / Failure Ratio

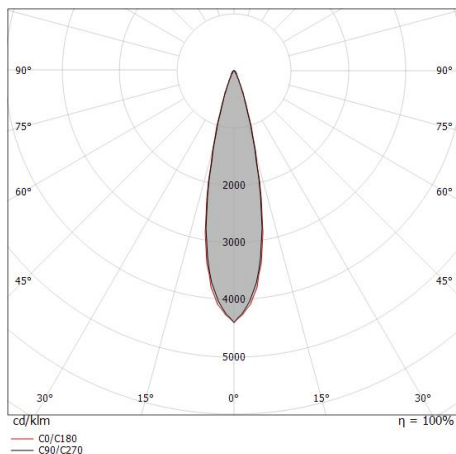
L70 B10 C0 252000h (at Tj 65 Ta 25 )

### UGR

UGR axial	24
UGR transversal	23.9
X=4H   Y=8H	S=0.25H
Reflection factor	70/50/20

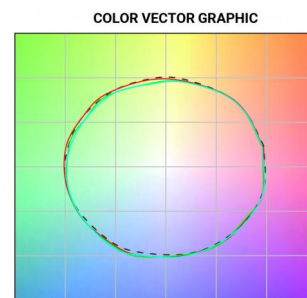
### OPTICAL

C0/C180 optics	24°
Light distribution symmetry	Symmetrical



Distance [m]	Cone diameter [m]	illuminance [lx]
0.5	0.21 0.22	E(0°) 65904 E(C90) 12.0° 30975 E(C0) 12.2° 31157
1.0	0.43 0.43	E(0°) 16476 E(C90) 12.0° 7744 E(C0) 12.2° 7789
1.5	0.64 0.65	E(0°) 7323 E(C90) 12.0° 3442 E(C0) 12.2° 3462
2.0	0.85 0.86	E(0°) 4119 E(C90) 12.0° 1936 E(C0) 12.2° 1947
2.5	1.06 1.08	E(0°) 2636 E(C90) 12.0° 1239 E(C0) 12.2° 1246
3.0	1.28 1.30	E(0°) 1831 E(C90) 12.0° 860 E(C0) 12.2° 865

— C0/C180 (Half-peak divergence: 24.4°)  
— C90/C270 (Half-peak divergence: 24.0°)





Fixing base - Base without power supply  
Material:Iron, colour:White, processing:Coating.

**Code**  
98588



Diffuser - Not compatible with 60° optics

**Code**  
C-U300013



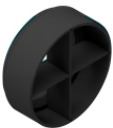
Anti-glare  
Anti-glare Type: honeycomb louvre.  
Material:Pom-C, colour:Black.

**Code**  
C-U300014



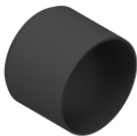
Anti-glare  
Anti-glare Type: 45° cylindrical screen.  
Material:Pom-C, colour:Black.

**Code**  
C-U300030



Anti-glare  
Anti-glare Type: cross louveres.  
Material:Pom-C, colour:Black.

**Code**  
C-U300031



Anti-glare  
Anti-glare Type: cylindrical screen.  
Material:Pom-C, colour:Black.

**Code**  
C-U300029



Optics - SPOT  
Light distribution: spot,Cover material: uv resistant polycarbonate

**Code**  
C-U300015



Optics - FLOOD  
Light distribution: flood,Cover material: ,uv resistant polycarbonate,uv resistant polycarbonate,uv resistant polycarbonate

**Code**  
C-U300016



Optics - WIDE FLOOD

Light distribution: medium flood,Cover material: ,uv resistant polycarbonate,uv resistant polycarbonate,uv resistant polycarbonate

**Code**

C-U300017



Optics

Light distribution: adjustable,Cover material: ,aluminium

**Code**

C-U300034