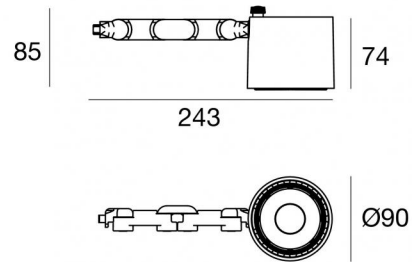


# Navata\_Optus



Projectors | 1 arrayLED 24 W DC 700 mA | CRI 98  
82392M30



Technical data	
Type	Surface
Installation position	Wall lights - Ceiling - Floor
Installation environment	Indoor
Light Source	LED
Circuit structure	arrayLED
Optics	Flood
Light emission direction	frontal
Nominal power	24 W DC
Source lumens	3790 lm
Input voltage range	700mA
CCT / Tone	2700 K
Colour rendering index	98 Ra
C.C. / C.V.	CC
Safety class	3
IP	IP20
Glow wire test	850°
Direct mounting on normally flammable surfaces	Yes
CE	Yes
Driver included	No
Dimmable article	DALI - 1-10V
Directional	Swivelling
total angle (vertical plane)	180 °
total angle (horizontal plane)	360 °
Tilting	No
Walk-over	No
Drive-over	No
Cable included	Yes
Cable length	0,2 m
Resin potting	No
Type of light emission	Single emission
Net weight	0.600 Kg
Electrostatic discharge protection	No
Surge protection	No

## Finishing casing

Material	Aluminium
Colour	Black
Processing	Coating

## Electronics

	99112 On/Off Driver 198~264V AC (1 art.)
	99941 Push and Simply Dim - DALI-2 Controller (1 art.)
	99943 Multi Power 198~264V AC / 176~264V DC (1 art.)
	99951 DALI Multi Power 198~264V AC / 176~275V DC (1 art.)
	99953 Multi Power 198~264V AC / 176~264V DC (1 art.)
	83172 Bluetooth Controller (1 art.)
	C-E100008 Multi Power 198~264V AC / 180~275V DC (1 art.)



Projectors | 1 arrayLED 24 W DC 700 mA | CRI 98 | Base 82392M30

Single emission projectors for indoor application. The super warm white LED light source with a flood light distribution is composed of 1 arrayed LEDs with CCT of 2700 K and a CRI 98; the source luminous flux is 3790 lm, with a 157.9 lm/W nominal luminous efficacy.

The device body is made of aluminium and features a black finish, processed by means of coating. The ingress protection degree is IP20; the total weight is of 0.600 kg. The power supply driver is not provided and is to be ordered separately.

The total absorbed power is 24 W. The power supply cable is included and features a 0,2 m length.

The device features protection class III and can be wall lights, ceiling or floor-mounted.

Compliant with the EN 60598-1 standard and its specific provisions.

### Energy efficiency class

This product contains a light source of energy efficiency class E.

### Illuminotechnical Features

Light Output Ratio (LOR)	72 %
Source lumens	3790 lm
Delivered lumens	2750 lm
Consumption	24 W
Luminaire efficacy	114 lm/W
Colour temperature	2700 K
Standard Deviation of Colour Matching	2 Step MacAdam
Colour rendering index	98 Ra
Black Body Locus	On
Standard Operating Ambient Temperature	-20 / +50°C
Ordinary temperature on the glass	40°C

### LED Life / Failure Ratio

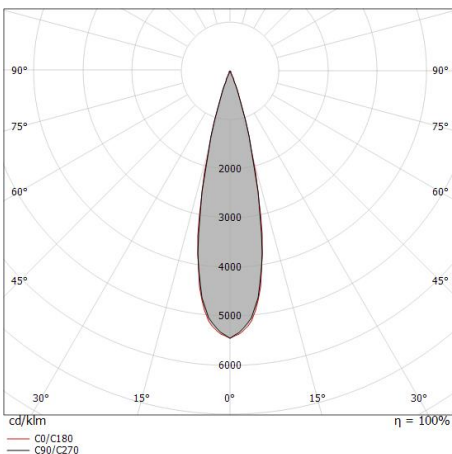
L70 B10 C0 252000h (at Tj 65 Ta 25 )

### UGR

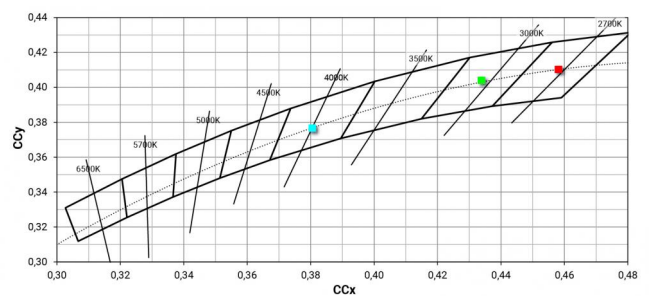
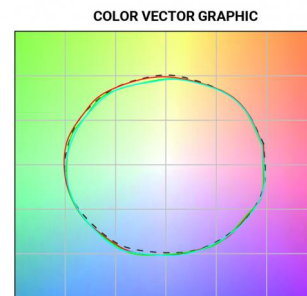
UGR axial	11.7
UGR transversal	11.7
X=4H   Y=8H	S=0.25H
Reflection factor	70/50/20

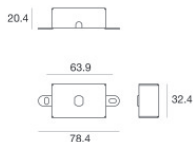
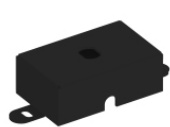
### OPTICAL

C0/C180 optics	25°
Light distribution simmetry	Symmetrical



Distance [m]	Cone diameter [m]	illuminance [lx]
0.5	0.22 0.22	E(0°) 59886 E(C90) 12.5° 28010 E(C0) 12.6° 28084
1.0	0.44 0.45	E(0°) 14972 E(C90) 12.5° 7003 E(C0) 12.6° 7021
1.5	0.67 0.67	E(0°) 6654 E(C90) 12.5° 3112 E(C0) 12.6° 3120
2.0	0.89 0.89	E(0°) 3743 E(C90) 12.5° 1751 E(C0) 12.6° 1755
2.5	1.11 1.12	E(0°) 2395 E(C90) 12.5° 1120 E(C0) 12.6° 1123
3.0	1.33 1.34	E(0°) 1664 E(C90) 12.5° 778 E(C0) 12.6° 780





Fixing base - Base without power supply  
Material:Iron, colour:Black, processing:Coating.

**Code**  
98589



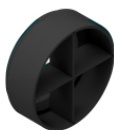
Diffuser  
Diffuser Type: elliptical filter.  
Material:Pom-C, colour:Black.

**Code**  
99797



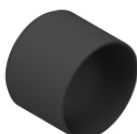
Anti-glare  
Anti-glare Type: honeycomb louvre.  
Material:Pom-C, colour:Black.

**Code**  
99798



Anti-glare  
Anti-glare Type: cross louvres.  
Material:Pom-C, colour:Black.

**Code**  
99799



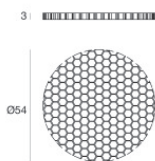
Anti-glare  
Anti-glare Type: cylindrical screen.  
Material:Pom-C, colour:Black.

**Code**  
99796



Anti-glare  
Anti-glare Type: 45° cylindrical screen.  
Material:Pom-C, colour:Black.

**Code**  
99795



Anti-glare  
Anti-glare Type: honeycomb louvre.  
Material:Pom-C, colour:Black.

**Code**  
99842



Optics  
Light distribution: spot,Cover material: uv resistant polycarbonate

**Code**  
99808



Optics  
Light distribution: medium flood,Cover material: uv resistant polycarbonate

**Code**  
99809



Optics  
Light distribution: flood,Cover material: uv resistant polycarbonate

**Code**  
99810



Optics - Focal kit (min 16° max 42°)  
Light distribution: adjustable,Cover material: aluminium

**Code**  
99843