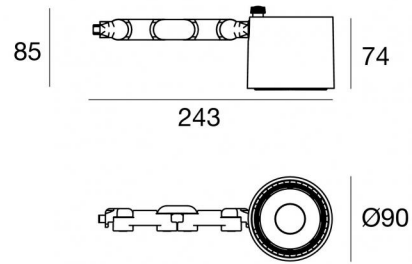


# Navata\_Optus



Projectors | 1 arrayLED 24 W DC 700 mA | CRI 90  
82389M60



Technical data	
Type	Surface
Installation position	Wall lights - Ceiling - Floor
Installation environment	Indoor
Light Source	LED
Circuit structure	arrayLED
Optics	Wide Flood
Light emission direction	frontal
Nominal power	24 W DC
Source lumens	3829 lm
Input voltage range	700mA
CCT / Tone	2700 K
Colour rendering index	90 Ra
C.C. / C.V.	CC
Safety class	3
IP	IP20
Glow wire test	850°
Direct mounting on normally flammable surfaces	Yes
CE	Yes
Driver included	No
Dimmable article	DALI - 1-10V
Directional	Swivelling
total angle (vertical plane)	180 °
total angle (horizontal plane)	360 °
Tilting	No
Walk-over	No
Drive-over	No
Cable included	Yes
Cable length	0,2 m
Resin potting	No
Type of light emission	Single emission
Net weight	0.600 Kg
Electrostatic discharge protection	No
Surge protection	No

## Finishing casing

Material	Aluminium
Colour	White
Processing	Coating

## Electronics



99112  
On/Off Driver 198~264V AC



99938  
Multi Power 198~264V AC / 176~264V DC



99936  
DALI-2 Controller



99946  
DALI Multi Power 198~264V AC / 176~275V DC



99948  
Multi Power 198~264V AC / 176~264V DC



83171  
Bluetooth Controller



C-E100008  
Multi Power 198~264V AC / 180~275V DC



Projectors | 1 arrayLED 24 W DC 700 mA | CRI 90 | Base  
**82389M60**

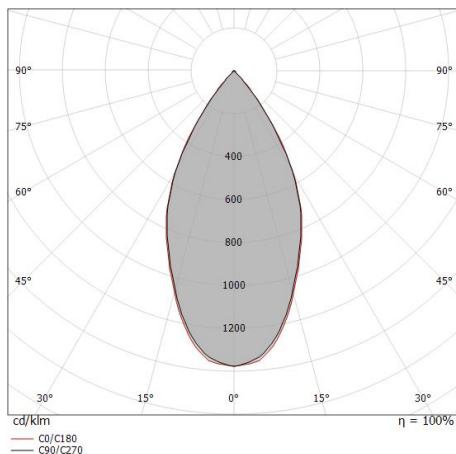
Single emission projectors for indoor application. The super warm white LED light source with a wide flood light distribution is composed of 1 arrayed LEDs with CCT of 2700 K and a CRI 90; the source luminous flux is 3829 lm, with a 159.5 lm/W nominal luminous efficacy.

The device body is made of aluminium and features a white finish, processed by means of coating. The ingress protection degree is IP20; the total weight is of 0.600 kg. The power supply driver is not provided and is to be ordered separately.

The total absorbed power is 24 W. The power supply cable is included and features a 0,2 m length.

The device features protection class III and can be wall lights, ceiling or floor-mounted.

Compliant with the EN 60598-1 standard and its specific provisions.



Distance [m]	Cone diameter [m]	illuminance [lx]
0.5	0.49 0.50	E(0°) 14242 E(C90) 26.2° 5159 E(C0) 26.5° 5122
1.0	0.98 1.00	E(0°) 3560 E(C90) 26.2° 1290 E(C0) 26.5° 1281
1.5	1.48 1.50	E(0°) 1582 E(C90) 26.2° 573 E(C0) 26.5° 569
2.0	1.97 1.99	E(0°) 890 E(C90) 26.2° 322 E(C0) 26.5° 320
2.5	2.46 2.49	E(0°) 570 E(C90) 26.2° 206 E(C0) 26.5° 205
3.0	2.95 2.99	E(0°) 396 E(C90) 26.2° 143 E(C0) 26.5° 142

— C0/C180 (Half-peak divergence: 53.0°)  
— C90/C270 (Half-peak divergence: 52.4°)

### Energy efficiency class

This product contains a light source of energy efficiency class E.

### Illuminotechnical Features

Light Output Ratio (LOR)	67 %
Source lumens	3829 lm
Delivered lumens	2584 lm
Consumption	24 W
Luminaire efficacy	107 lm/W
Colour temperature	2700 K
Standard Deviation of Colour Matching	2 Step MacAdam
Colour rendering index	90 Ra
Colour Rendering Index	60 R9
Black Body Locus	On
Standard Operating Ambient Temperature	-20 / +50°C
Ordinary temperature on the glass	40°C

### LED Life / Failure Ratio

L70 B10 C0 252000h (at Tj 65 Ta 25 )

### UGR

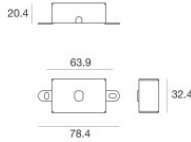
UGR axial	21.9
UGR transversal	22
X=4H   Y=8H	S=0.25H
Reflection factor	70/50/20

### OPTICAL

C0/C180 optics	52°
Light distribution symmetry	Symmetrical

### COLOR VECTOR GRAPHIC





Fixing base - Base without power supply  
 Material:Iron, colour:White, processing:Coating.

**Code**  
98588



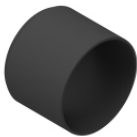
Diffuser  
 Diffuser Type: elliptical filter.  
 Material:Pom-C, colour:Black.

**Code**  
99797



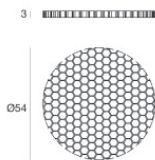
Anti-glare  
 Anti-glare Type: honeycomb louvre.  
 Material:Pom-C, colour:Black.

**Code**  
99798



Anti-glare  
 Anti-glare Type: cylindrical screen.  
 Material:Pom-C, colour:Black.

**Code**  
99796



Anti-glare  
 Anti-glare Type: honeycomb louvre.  
 Material:Pom-C, colour:Black.

**Code**  
99842



Optics  
 Light distribution: spot,Cover material: uv resistant polycarbonate

**Code**  
99808



Optics  
 Light distribution: medium flood,Cover material: ,uv resistant polycarbonate,uv resistant polycarbonate,uv resistant polycarbonate

**Code**  
99809



Optics  
 Light distribution: flood,Cover material: ,uv resistant polycarbonate,uv resistant polycarbonate,uv resistant polycarbonate

**Code**  
99810



Optics - Focal kit (min 16° max 42°)

Light distribution: adjustable,Cover material: ,aluminium

**Code**

99843