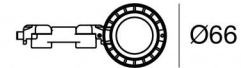
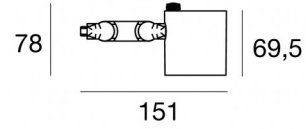


# Navata\_Optus



Projectors | 1 arrayLED 16 W DC 450 mA | CRI 98  
82385W15



Technical data	
Type	Surface
Installation position	Wall lights - Ceiling - Floor
Installation environment	Indoor
Light Source	LED
Circuit structure	arrayLED
Optics	Spot
Light emission direction	frontal
Nominal power	16 W DC
Source lumens	2263 lm
Input voltage range	450mA
CCT / Tone	3000 K
Colour rendering index	98 Ra
C.C. / C.V.	CC
Safety class	3
IP	IP20
Glow wire test	850°
Direct mounting on normally flammable surfaces	Yes
CE	Yes
Driver included	No
Dimmable article	DALI - 1-10V
Directional	Swivelling
total angle (vertical plane)	180 °
total angle (horizontal plane)	360 °
Tilting	No
Walk-over	No
Drive-over	No
Cable included	Yes
Cable length	0,2 m
Resin potting	No
Type of light emission	Single emission
Net weight	0.380 Kg
Electrostatic discharge protection	No
Surge protection	No

## Finishing casing

Material	Aluminium
Colour	White
Processing	Coating

## Electronics

	99734 Multi Power 198~264V AC / 180~275V DC (- art.)
	99730 DALI - Push and Simply Dim Multi Power 198~264V AC / 180~275V DC (- art.)
	99938 Multi Power 198~264V AC / 176~264V DC (1 - 2 art.)
	99936 DALI-2 Controller (1 - 2 art.)
	99946 DALI Multi Power 198~264V AC / 176~275V DC (1 art.)
	99948 Multi Power 198~264V AC / 176~264V DC (1 art.)
	83168 Bluetooth Controller (1 art.)
	C-E100007 Multi Power 198~264V AC / 180~275V DC (1 art.)



Projectors | 1 arrayLED 16 W DC 450 mA | CRI 98 | Base  
**82385W15**

Single emission projectors for indoor application. The warm white LED light source with a spot light distribution is composed of 1 arrayed LEDs with CCT of 3000 K and a CRI 98; the source luminous flux is 2263 lm, with a 141.4 lm/W nominal luminous efficacy.

The device body is made of aluminium and features a white finish, processed by means of coating. The ingress protection degree is IP20; the total weight is of 0.380 kg. The power supply driver is not provided and is to be ordered separately.

The total absorbed power is 16 W. The power supply cable is included and features a 0,2 m length.

The device features protection class III and can be wall lights, ceiling or floor-mounted.

Compliant with the EN 60598-1 standard and its specific provisions.

### Energy efficiency class

This product contains a light source of energy efficiency class E.

### Illuminotechnical Features

Light Output Ratio (LOR)	68 %
Source lumens	2263 lm
Delivered lumens	1551 lm
Consumption	16 W
Luminaire efficacy	96 lm/W
Colour temperature	3000 K
Standard Deviation of Colour Matching	2 Step MacAdam
Colour rendering index	98 Ra
Black Body Locus	On
Standard Operating Ambient Temperature	-20 / +50°C
Ordinary temperature on the glass	40°C

### LED Life / Failure Ratio

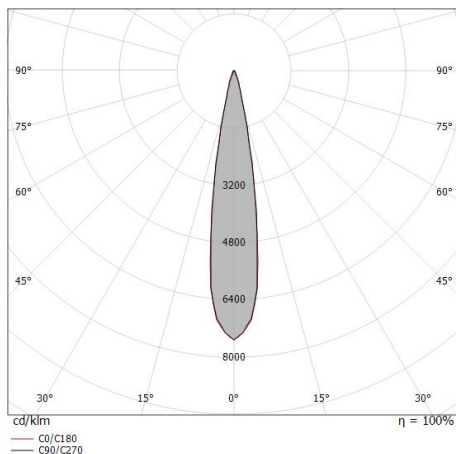
L70 B10 C0 252000h (at Tj 65 Ta 25 )

### UGR

UGR axial	17.5
UGR transversal	17.6
X=4H   Y=8H	S=0.25H
Reflection factor	70/50/20

### OPTICAL

C0/C180 optics	18°
Light distribution symmetry	Symmetrical



Distance [m]	Cone diameter [m]	illuminance [lx]
0.5	0.16 0.16	E(0°) 46670 E(C90) 22488 E(C0) 22849
1.0	0.32 0.32	E(0°) 11668 E(C90) 5622 E(C0) 5712
1.5	0.49 0.48	E(0°) 5186 E(C90) 2499 E(C0) 2539
2.0	0.65 0.64	E(0°) 2917 E(C90) 1406 E(C0) 1428
2.5	0.81 0.80	E(0°) 1867 E(C90) 900 E(C0) 914
3.0	0.97 0.96	E(0°) 1296 E(C90) 625 E(C0) 635

— C0/C180 (Half-peak divergence: 18.2°)  
— C90/C270 (Half-peak divergence: 18.4°)

### COLOR VECTOR GRAPHIC





Fixing base - Base without power supply  
 Material:Iron, colour:White, processing:Coating.

**Code**  
98588



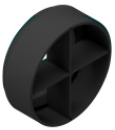
Diffuser  
 Diffuser Type: elliptical filter.  
 Material:Pom-C, colour:Black.

**Code**  
99781



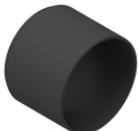
Anti-glare  
 Anti-glare Type: honeycomb louvre.  
 Material:Pom-C, colour:Black.

**Code**  
99780



Anti-glare  
 Anti-glare Type: cross louvres.  
 Material:Pom-C, colour:Black.

**Code**  
99779



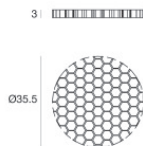
Anti-glare  
 Anti-glare Type: cylindrical screen.  
 Material:Pom-C, colour:Black.

**Code**  
99783



Anti-glare  
 Anti-glare Type: 45° cylindrical screen.  
 Material:Pom-C, colour:Black.

**Code**  
99782



Anti-glare - Accessory for focal kit with code 83347.  
 Anti-glare Type: honeycomb louvre.  
 Material:Pom-C, colour:Black.

**Code**  
99841



Optics  
 Light distribution: spot,Cover material: uv resistant polycarbonate

**Code**  
99827



Optics

Light distribution: medium flood,Cover material: ,uv resistant polycarbonate,uv resistant polycarbonate,uv resistant polycarbonate

**Code**

99828



Optics

Light distribution: flood,Cover material: ,uv resistant polycarbonate,uv resistant polycarbonate,uv resistant polycarbonate

**Code**

99829



Optics - Focal kit (min 16° max 50°)

Light distribution: adjustable,Cover material: ,aluminium

**Code**

99844