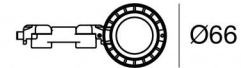
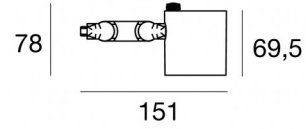


Navata_Optus



Projectors | 1 arrayLED 16 W DC 450 mA | CRI 98
82385M60











| Technical data | |
|--|-------------------------------|
| Type | Surface |
| Installation position | Wall lights - Ceiling - Floor |
| Installation environment | Indoor |
| Light Source | LED |
| Circuit structure | arrayLED |
| Optics | Wide Flood |
| Light emission direction | frontal |
| Nominal power | 16 W DC |
| Source lumens | 2212 lm |
| Input voltage range | 450mA |
| CCT / Tone | 2700 K |
| Colour rendering index | 98 Ra |
| C.C. / C.V. | CC |
| Safety class | 3 |
| IP | IP20 |
| Glow wire test | 850° |
| Direct mounting on normally flammable surfaces | Yes |
| CE | Yes |
| Driver included | No |
| Dimmable article | DALI - 1-10V |
| Directional | Swivelling |
| total angle (vertical plane) | 180 ° |
| total angle (horizontal plane) | 360 ° |
| Tilting | No |
| Walk-over | No |
| Drive-over | No |
| Cable included | Yes |
| Cable length | 0,2 m |
| Resin potting | No |
| Type of light emission | Single emission |
| Net weight | 0.380 Kg |
| Electrostatic discharge protection | No |
| Surge protection | No |

Finishing casing

| | |
|------------|-----------|
| Material | Aluminium |
| Colour | White |
| Processing | Coating |

Electronics

| | |
|--|--|
|  | 99734 Multi Power 198~264V AC / 180~275V DC (- art.) |
|  | 99730 DALI - Push and Simply Dim Multi Power 198~264V AC / 180~275V DC (- art.) |
|  | 99938 Multi Power 198~264V AC / 176~264V DC (1 - 2 art.) |
|  | 99936 DALI-2 Controller (1 - 2 art.) |
|  | 99946 DALI Multi Power 198~264V AC / 176~275V DC (1 art.) |
|  | 99948 Multi Power 198~264V AC / 176~264V DC (1 art.) |
|  | 83168 Bluetooth Controller (1 art.) |
|  | C-E100007 Multi Power 198~264V AC / 180~275V DC (1 art.) |



Projectors | 1 arrayLED 16 W DC 450 mA | CRI 98 | Base
82385M60

Single emission projectors for indoor application. The super warm white LED light source is composed of 1 arrayed LEDs with CCT of 2700 K and a CRI 98; the source luminous flux is 2212 lm, with a 138.3 lm/W nominal luminous efficacy.

The device body is made of aluminium and features a white finish, processed by means of coating. The ingress protection degree is IP20; the total weight is of 0.380 kg. The power supply driver is not provided and is to be ordered separately.

The total absorbed power is 16 W. The power supply cable is included and features a 0,2 m length.

The device features protection class III and can be wall lights, ceiling or floor-mounted.

Compliant with the EN 60598-1 standard and its specific provisions.

Energy efficiency class

This product contains a light source of energy efficiency class E.

Illuminotechnical Features

| | |
|--|----------------|
| Light Output Ratio (LOR) | 71 % |
| Source lumens | 2212 lm |
| Delivered lumens | 1590 lm |
| Consumption | 16 W |
| Luminaire efficacy | 99 lm/W |
| Colour temperature | 2700 K |
| Standard Deviation of Colour Matching | 2 Step MacAdam |
| Colour rendering index | 98 Ra |
| Black Body Locus | On |
| Standard Operating Ambient Temperature | -20 / +50°C |
| Ordinary temperature on the glass | 40°C |

LED Life / Failure Ratio

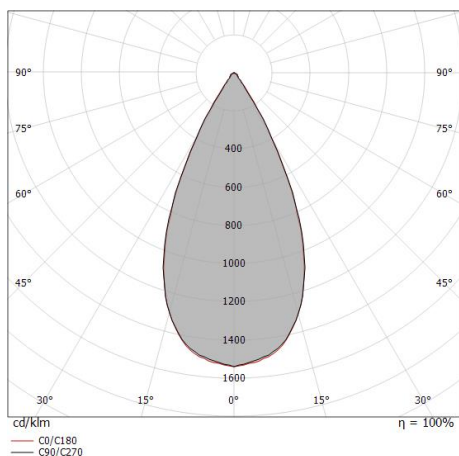
L70 B10 C0 252000h (at Tj 65 Ta 25)

UGR

| | |
|-------------------|----------|
| UGR axial | 20 |
| UGR transversal | 20 |
| X=4H Y=8H | S=0.25H |
| Reflection factor | 70/50/20 |

OPTICAL

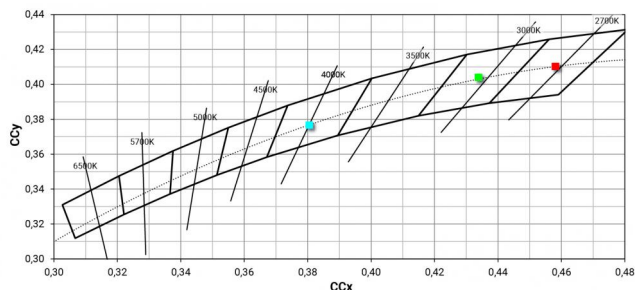
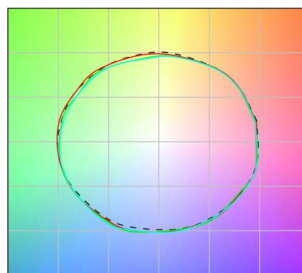
| | |
|-----------------------------|-------------|
| C0/C180 optics | 49° |
| Light distribution simmetry | Symmetrical |

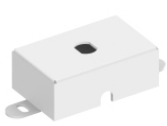


| Distance [m] | Cone diameter [m] | illuminance [lx] |
|--------------|-------------------|---|
| 0.5 | 0.47 0.46 | E(0°) 9784 E(C90) 25.0° 3652 E(C0) 24.7° 3698 |
| 1.0 | 0.93 0.92 | E(0°) 2446 E(C90) 25.0° 913 E(C0) 24.7° 925 |
| 1.5 | 1.40 1.38 | E(0°) 1087 E(C90) 25.0° 406 E(C0) 24.7° 411 |
| 2.0 | 1.87 1.84 | E(0°) 612 E(C90) 25.0° 228 E(C0) 24.7° 231 |
| 2.5 | 2.33 2.30 | E(0°) 391 E(C90) 25.0° 146 E(C0) 24.7° 148 |
| 3.0 | 2.80 2.76 | E(0°) 272 E(C90) 25.0° 101 E(C0) 24.7° 103 |

— C0/C180 (Half-peak divergence: 49.4°)
— C90/C270 (Half-peak divergence: 50.0°)

COLOR VECTOR GRAPHIC





Fixing base - Base without power supply
Material:Iron, colour:White, processing:Coating.

Code
98588



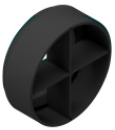
Diffuser
Diffuser Type: elliptical filter.
Material:Pom-C, colour:Black.

Code
99781



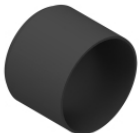
Anti-glare
Anti-glare Type: honeycomb louvre.
Material:Pom-C, colour:Black.

Code
99780



Anti-glare
Anti-glare Type: cross louvres.
Material:Pom-C, colour:Black.

Code
99779



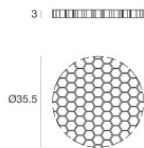
Anti-glare
Anti-glare Type: cylindrical screen.
Material:Pom-C, colour:Black.

Code
99783



Anti-glare
Anti-glare Type: 45° cylindrical screen.
Material:Pom-C, colour:Black.

Code
99782



Anti-glare - Accessory for focal kit with code 83347.
Anti-glare Type: honeycomb louvre.
Material:Pom-C, colour:Black.

Code
99841



Optics
Light distribution: spot,Cover material: uv resistant polycarbonate

Code
99827



Optics

Light distribution: medium flood,Cover material: ,uv resistant polycarbonate,uv resistant polycarbonate,uv resistant polycarbonate

Code

99828



Optics

Light distribution: flood,Cover material: ,uv resistant polycarbonate,uv resistant polycarbonate,uv resistant polycarbonate

Code

99829



Optics - Focal kit (min 16° max 50°)

Light distribution: adjustable,Cover material: ,aluminium

Code

99844