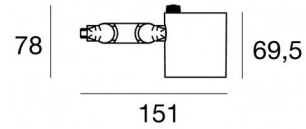


Navata_Optus



Projectors | 1 arrayLED 16 W DC 450 mA | CRI 90
82384N30



Technical data	
Type	Surface
Installation position	Wall lights - Ceiling - Floor
Installation environment	Indoor
Light Source	LED
Circuit structure	arrayLED
Optics	Medium Flood
Light emission direction	frontal
Nominal power	16 W DC
Source lumens	2675 lm
Input voltage range	450mA
CCT / Tone	4000 K
Colour rendering index	90 Ra
C.C. / C.V.	CC
Safety class	3
IP	IP20
Glow wire test	850°
Direct mounting on normally flammable surfaces	Yes
CE	Yes
Driver included	No
Dimmable article	DALI - 1-10V
Directional	Swivelling
total angle (vertical plane)	180 °
total angle (horizontal plane)	360 °
Tilting	No
Walk-over	No
Drive-over	No
Cable included	Yes
Cable length	0,2 m
Resin potting	No
Type of light emission	Single emission
Net weight	0.351 Kg
Electrostatic discharge protection	No
Surge protection	No

Finishing casing

Material	Aluminium
Colour	Black
Processing	Coating

Electronics

	99734 Multi Power 198~264V AC / 180~275V DC (- art.)
	99730 DALI - Push and Simply Dim Multi Power 198~264V AC / 180~275V DC (- art.)
	99941 DALI-2 Controller (1 - 2 art.)
	99943 Multi Power 198~264V AC / 176~264V DC (1 - 2 art.)
	99951 DALI Multi Power 198~264V AC / 176~275V DC (1 art.)
	99953 Multi Power 198~264V AC / 176~264V DC (1 art.)
	83169 Bluetooth Controller (1 art.)
	C-E100007 Multi Power 198~264V AC / 180~275V DC (1 art.)



Projectors | 1 arrayLED 16 W DC 450 mA | CRI 90 | Base
82384N30

Single emission projectors for indoor application. The natural white LED light source with a medium flood light distribution is composed of 1 arrayed LEDs with CCT of 4000 K and a CRI 90; the source luminous flux is 2675 lm, with a 167.2 lm/W nominal luminous efficacy.

The device body is made of aluminium and features a black finish, processed by means of coating. The ingress protection degree is IP20; the total weight is of 0.351 kg. The power supply driver is not provided and is to be ordered separately.

The total absorbed power is 16 W. The power supply cable is included and features a 0,2 m length.

The device features protection class III and can be wall lights, ceiling or floor-mounted.

Compliant with the EN 60598-1 standard and its specific provisions.



Distance [m]	Cone diameter [m]	illuminance [lx]
0.5	0.35 0.35	E(0°) 18306 E(C90) 19.1° 7801 E(C0) 19.2° 7770
1.0	0.69 0.70	E(0°) 4576 E(C90) 19.1° 1950 E(C0) 19.2° 1942
1.5	1.04 1.04	E(0°) 2034 E(C90) 19.1° 867 E(C0) 19.2° 863
2.0	1.39 1.38	E(0°) 1144 E(C90) 19.1° 488 E(C0) 19.2° 486
2.5	1.73 1.74	E(0°) 732 E(C90) 19.1° 312 E(C0) 19.2° 311
3.0	2.08 2.09	E(0°) 508 E(C90) 19.1° 217 E(C0) 19.2° 216

— C0/C180 (Half-peak divergence: 38.4°)
— C90/C270 (Half-peak divergence: 38.2°)

Energy efficiency class

This product contains a light source of energy efficiency class E.

Illuminotechnical Features

Light Output Ratio (LOR)	72 %
Source lumens	2675 lm
Delivered lumens	1947 lm
Consumption	16 W
Luminaire efficacy	121 lm/W
Colour temperature	4000 K
Standard Deviation of Colour Matching	2 Step MacAdam
Colour rendering index	90 Ra
Colour Rendering Index	60 R9
Black Body Locus	On
Standard Operating Ambient Temperature	-20 / +50°C
Ordinary temperature on the glass	40°C

LED Life / Failure Ratio

L70 B10 C0 252000h (at Tj 65 Ta 25)

UGR

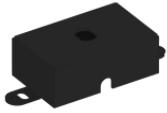
UGR axial	18.8
UGR transversal	18.8
X=4H Y=8H	S=0.25H
Reflection factor	70/50/20

OPTICAL

C0/C180 optics	38°
Light distribution symmetry	Symmetrical

COLOR VECTOR GRAPHIC





Fixing base - Base without power supply
Material:Iron, colour:Black, processing:Coating.

Code
98589



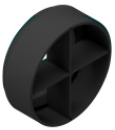
Diffuser
Diffuser Type: elliptical filter.
Material:Pom-C, colour:Black.

Code
99781



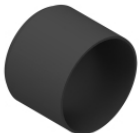
Anti-glare
Anti-glare Type: honeycomb louvre.
Material:Pom-C, colour:Black.

Code
99780



Anti-glare
Anti-glare Type: cross louvres.
Material:Pom-C, colour:Black.

Code
99779



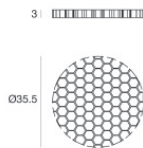
Anti-glare
Anti-glare Type: cylindrical screen.
Material:Pom-C, colour:Black.

Code
99783



Anti-glare
Anti-glare Type: 45° cylindrical screen.
Material:Pom-C, colour:Black.

Code
99782



Anti-glare - Accessory for focal kit with code 83347.
Anti-glare Type: honeycomb louvre.
Material:Pom-C, colour:Black.

Code
99841



Optics
Light distribution: spot,Cover material: uv resistant polycarbonate

Code
99827



Optics

Light distribution: medium flood,Cover material: ,uv resistant polycarbonate,uv resistant polycarbonate,uv resistant polycarbonate

Code

99828



Optics

Light distribution: flood,Cover material: ,uv resistant polycarbonate,uv resistant polycarbonate,uv resistant polycarbonate

Code

99829



Optics - Focal kit (min 16° max 50°)

Light distribution: adjustable,Cover material: ,aluminium

Code

99844