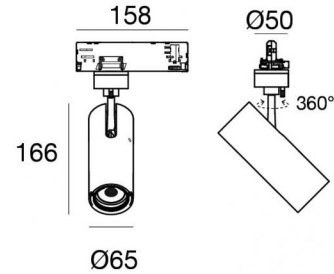




Projectors | 198-264 V | 1 arrayLED 23 W DC 630 mA
CRI 90
82229W15



Technical data	
Type	Track
Installation position	Ceiling
Installation environment	Indoor
Light Source	LED
Circuit structure	arrayLED
Optics	Spot
Light emission direction	frontal
Nominal power	23 W DC
Source lumens	3287 lm
Nominal input voltage	220 - 240 V AC
Input voltage range	198 - 264 V AC
Frequency	50 - 60 Hz
CCT / Tone	3000 K
Colour rendering index	90 Ra
C.C. / C.V.	AC
Safety class	2
IP	IP20
Glow wire test	850°
Direct mounting on normally flammable surfaces	Yes
CE	Yes
Driver included	Driver
Dimmable article	Dimming on Board
Directional	Swivelling
total angle (vertical plane)	90 °
total angle (horizontal plane)	360 °
Tilting	No
Walk-over	No
Drive-over	No
Cable included	No
Resin potting	No
Type of light emission	Single emission
Net weight	0.612 Kg
Electrostatic discharge protection	Yes
Surge protection	2 KV
Optics technology	Anti - Glare

Finishing casing	
Material	Die-cast Aluminium EN AB - 46100
Colour	White
Processing	Powder coating



Projectors | 198-264 V | 1 arrayLED 23 W DC 630 mA | CRI 90 | Base
82229W15

Single emission projectors for indoor application. The warm white LED light source with a spot light distribution is composed of 1 arrayed LEDs with CCT of 3000 K and a CRI 90; the source luminous flux is 3287 lm, with a 142.9 lm/W nominal luminous efficacy.

The device body is made of die-cast aluminium en ab - 46100 and features a white finish, processed by means of powder coating. The ingress protection degree is IP20; the total weight is of 0.612 kg.

The total absorbed power is 26 W.

The device features protection class II and can be ceiling-mounted.

Compliant with the EN 60598-1 standard and its specific provisions.

Energy efficiency class

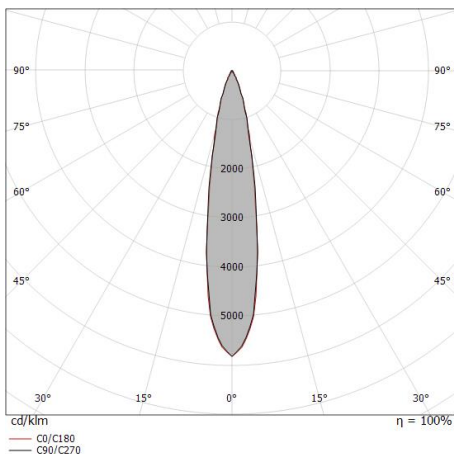
This product contains a light source of energy efficiency class E.

Illuminotechnical Features

Source lumens	3287 lm
Colour temperature	3000 K
Standard Deviation of Colour Matching	2 Step MacAdam
Colour rendering index	90 Ra
Colour Rendering Index	60 R9
Black Body Locus	On
Standard Operating Ambient Temperature	-20 / +50°C
Ordinary temperature on the glass	40°C

LED Life / Failure Ratio

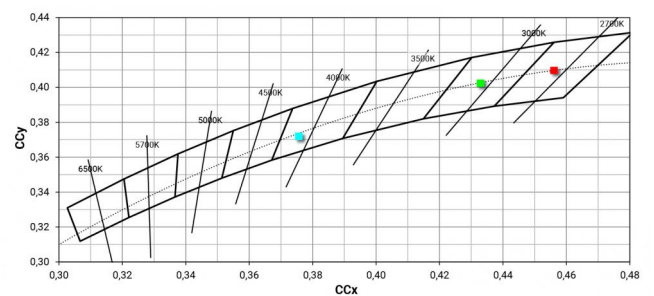
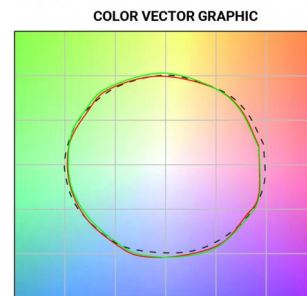
L70 B10 C0 252000h (at Tj 65 Ta 25)



Distance [m]	Cone diameter [m]	E(0°)	E(C90)	E(C0)
0.5	0.17 0.17	48647	23460	23445
1.0	0.34 0.34	12162	5865	5861
1.5	0.51 0.51	5405	2607	2605
2.0	0.68 0.68	3040	1466	1465
2.5	0.85 0.85	1946	938	938
3.0	1.03 1.01	1251	652	651

illuminance [lx]

— C0/C180 (Half-peak divergence: 19.2°)
— C90/C270 (Half-peak divergence: 19.4°)





Optics
Light distribution: spot,Cover material: uv resistant polycarbonate

Code
99827



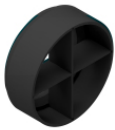
Optics
Light distribution: medium flood,Cover material: ,uv resistant polycarbonate,uv resistant polycarbonate,uv resistant polycarbonate

Code
99828



Optics
Light distribution: flood,Cover material: ,uv resistant polycarbonate,uv resistant polycarbonate,uv resistant polycarbonate

Code
99829



Anti-glare
Anti-glare Type: cross louvres.
Material:Pom-C, colour:Black.

Code
99779



Anti-glare
Anti-glare Type: honeycomb louvre.
Material:Pom-C, colour:Black.

Code
99780



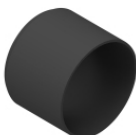
Diffuser
Diffuser Type: elliptical filter.
Material:Pom-C, colour:Black.

Code
99781



Anti-glare
Anti-glare Type: 45° cylindrical screen.
Material:Pom-C, colour:Black.

Code
99782



Anti-glare
Anti-glare Type: cylindrical screen.
Material:Pom-C, colour:Black.

Code
99783



		<p>Track Length: 1000mm; Type of track: Standard. Material:Aluminium, colour:White, processing:Coating.</p>	<table border="1"> <thead> <tr> <th>Finish</th> <th>Code</th> </tr> </thead> <tbody> <tr> <td>White</td> <td>83336</td> </tr> </tbody> </table>	Finish	Code	White	83336
Finish	Code						
White	83336						
		<p>Track Length: 1000mm; Type of track: Standard. Material:Aluminium, colour:Black, processing:Coating.</p>	<table border="1"> <thead> <tr> <th>Finish</th> <th>Code</th> </tr> </thead> <tbody> <tr> <td>Black</td> <td>83339</td> </tr> </tbody> </table>	Finish	Code	Black	83339
Finish	Code						
Black	83339						
		<p>Track Length: 3000mm; Type of track: Standard. Material:Aluminium, colour:Black, processing:Coating.</p>	<table border="1"> <thead> <tr> <th>Finish</th> <th>Code</th> </tr> </thead> <tbody> <tr> <td>Black</td> <td>83341</td> </tr> </tbody> </table>	Finish	Code	Black	83341
Finish	Code						
Black	83341						
		<p>Track - Three-phase Recessed White DALI Track, 2 m (9000-2/W-R) Length: 2000mm; Type of track: Standard. Material:Aluminium, colour:White, processing:Coating.</p>	<table border="1"> <thead> <tr> <th>Finish</th> <th>Code</th> </tr> </thead> <tbody> <tr> <td>White</td> <td>80991</td> </tr> </tbody> </table>	Finish	Code	White	80991
Finish	Code						
White	80991						
		<p>Track - Three-phase Recessed Grey DALI Track, 1 m (9000-1/B-R) Length: 1000mm; Type of track: Standard. Material:Aluminium, colour:Black, processing:Coating.</p>	<table border="1"> <thead> <tr> <th>Finish</th> <th>Code</th> </tr> </thead> <tbody> <tr> <td>Black</td> <td>80993</td> </tr> </tbody> </table>	Finish	Code	Black	80993
Finish	Code						
Black	80993						
		<p>Track - Three-phase Recessed White DALI Track, 3 m (9000-3/W-R) Length: 3000mm; Type of track: Standard. Material:Aluminium, colour:White, processing:Coating.</p>	<table border="1"> <thead> <tr> <th>Finish</th> <th>Code</th> </tr> </thead> <tbody> <tr> <td>White</td> <td>80992</td> </tr> </tbody> </table>	Finish	Code	White	80992
Finish	Code						
White	80992						
		<p>Power supply - White Right power supply header (9001/W) Material:PC, colour:white.</p>	<table border="1"> <thead> <tr> <th>Code</th> </tr> </thead> <tbody> <tr> <td>81033</td> </tr> </tbody> </table>	Code	81033		
Code							
81033							
		<p>Power supply - Black left power supply header (9002/B) Material:PC, colour:black.</p>	<table border="1"> <thead> <tr> <th>Code</th> </tr> </thead> <tbody> <tr> <td>81037</td> </tr> </tbody> </table>	Code	81037		
Code							
81037							



		<p>Junction - White power supply junction - central (9010/W) Type linear. Material:PC, colour:white.</p>	<p>Finish White</p>	<p>Code 81042</p>
		<p>Junction - Black power supply junction - centrale (9010/B) Type linear. Material:PC, colour:black.</p>	<p>Finish Black</p>	<p>Code 81043</p>
		<p>Track - Three-phase Recessed Black DALI Track, 2 m (9000-1/B-R) Length: 2000mm; Type of track: Standard. Material:Aluminium, colour:Black, processing:Coating.</p>	<p>Finish Black</p>	<p>Code 80994</p>
		<p>Power supply - White left power supply header (9002/W) Material:PC, colour:white.</p>		<p>Code 81036</p>
		<p>Junction - Left white T junction - external (9013/W) Type linear. Material:PC, colour:white.</p>	<p>Finish White</p>	<p>Code 81051</p>
		<p>Junction - Black left T junction - external (9013/B) Type linear. Material:PC, colour:black.</p>	<p>Finish Black</p>	<p>Code 81052</p>
		<p>Track Length: 2000mm; Type of track: Standard. Material:Aluminium, colour:White, processing:Coating.</p>	<p>Finish White</p>	<p>Code 83337</p>
		<p>Track Length: 2000mm; Type of track: Standard. Material:Aluminium, colour:Black, processing:Coating.</p>	<p>Finish Black</p>	<p>Code 83340</p>



		<p>Junction - Flexible white junction (9018/W) Type flexible curve. Material:PC, colour:white.</p>	<p>Finish White</p>	<p>Code 81066</p>
		<p>Closing cap - White end cap 9004/W Material:PC, colour:white.</p>	<p>Code 80999</p>	<p>Code 80999</p>
		<p>Junction - White electrical junction - internal (9003/W) Type linear. Material:PC, colour:white.</p>	<p>Finish White</p>	<p>Code 81039</p>
		<p>Track - Three-phase Recessed Black DALI Track, 3 m (9000-3/B-R) Length: 3000mm; Type of track: Standard. Material:Aluminium, colour:Black, processing:Coating.</p>	<p>Finish Black</p>	<p>Code 80995</p>
		<p>Junction - Right white T junction - external (9014/W) Type linear. Material:PC, colour:white.</p>	<p>Finish White</p>	<p>Code 81054</p>
		<p>Junction - Black electrical junction - internal (9003/B) Type linear. Material:PC, colour:black.</p>	<p>Finish Black</p>	<p>Code 81040</p>
		<p>Junction - White L junction - internal (9011/W) Type linear. Material:PC, colour:white.</p>	<p>Finish White</p>	<p>Code 81045</p>
		<p>Junction - Flexible black junction (9018/B) Type flexible curve. Material:PC, colour:black.</p>	<p>Finish Black</p>	<p>Code 81067</p>



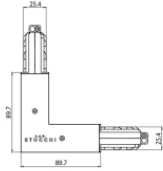
		<p>Power supply - Black Right power supply header (9001/B) Material:PC, colour:black.</p>	<p>Code 81034</p>
		<p>Junction - White X junction (9017/W) Type linear. Material:PC, colour:white.</p>	<p>Finish White Code 81063</p>
		<p>Track - Three-phase Recessed White DALI Track, 1 m (9000-1/W-R) Length: 1000mm; Type of track: Standard. Material:Aluminium, colour:White, processing:Coating.</p>	<p>Finish White Code 80990</p>
		<p>Closing cap - Black end cap 9004/B Material:PC, colour:black.</p>	<p>Code 81000</p>
		<p>Junction - Left black T junction - internal (9015/B) Type linear. Material:PC, colour:black.</p>	<p>Finish Black Code 81058</p>
		<p>Junction - Right black T junction - internal (9016/B) Type linear. Material:PC, colour:black.</p>	<p>Finish Black Code 81061</p>
		<p>Closing cap - Recessed white end cap 9004-R/W Material:PC, colour:white.</p>	<p>Code 81002</p>
		<p>Junction - Left white T junction - internal (9015/W) Type linear. Material:PC, colour:white.</p>	<p>Finish White Code 81057</p>



		<p>Junction - Black L junction - internal (9011/B) Type linear. Material:PC, colour:black.</p>	<p>Finish Black</p> <p>Code 81046</p>
		<p>Junction - Right White T junction - internal (9016/W) Type linear. Material:PC, colour:white.</p>	<p>Finish White</p> <p>Code 81060</p>
		<p>Junction - Black L junction - external (9012/B) Type linear. Material:PC, colour:black.</p>	<p>Finish Black</p> <p>Code 81049</p>
		<p>Ceiling rose - 5m black pendant luminaires kit + bracket (9000-KIT5-5-B) Material:plastic, colour:black.</p>	<p>Code 81015</p>
		<p>Suspensions - White rigid suspension 1m (S-9000-P3-W) Material:plastic, colour:white.</p>	<p>Code 81021</p>
		<p>Suspensions - Black rigid suspension 1m (S-9000-P3-B) Material:plastic, colour:black.</p>	<p>Code 81022</p>
		<p>Closing cap - Recessed black end cap 9004-R/B Material:PC, colour:black.</p>	<p>Code 81003</p>
		<p>Ceiling rose - 5m white pendant luminaires kit + bracket (9000-KIT5-5-W) Material:plastic, colour:white.</p>	<p>Code 81013</p>

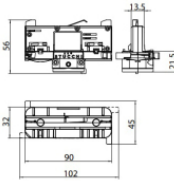


	<p>Ceiling rose - 1.5m white pendant luminaires kit + bracket (9000-KIT5-1,5-W) Material:plastic, colour:white.</p>	<p>Code 81012</p>	
		<p>Ceiling rose - 1.5m black pendant luminaires kit + bracket ((9000-KIT5-1,5-B) Material:plastic, colour:black.</p>	<p>Code 81014</p>
		<p>Bracket - Anodized fixing bracket (S-9000/131) L=35mm, H=14mm, D=24mm. Material:Aluminium, colour:translucent.</p>	<p>Finish Anod. Al. Code 81086</p>
		<p>Bracket - White fixing braket (S-9000/131-W) L=35mm, H=14mm, D=24mm. Material:Aluminium, colour:white, processing:Coating.</p>	<p>Finish White Code 81087</p>
		<p>Bracket - Black fixing braket (S-9000/131-B) L=35mm, H=14mm, D=24mm. Material:Aluminium, colour:Black, processing:Coating.</p>	<p>Finish Black Code 81088</p>
		<p>Cable cover - White cover for recessed L junction (S-9011-R/6-W) Material:PC, colour:white.</p>	<p>Code 81075</p>
		<p>Cable cover - Black cover for recessed X junction (S-9017-R/6-B) Material:PC, colour:black.</p>	<p>Code 81082</p>
		<p>White three-phase adapter (9009-4/W)</p>	<p>Code 81091</p>



Junction - White L junction - external (9012/W)
Type linear.
Material:PC, colour:white.

Finish	Code
White	81048



Black three-phase adapter (9009-4/B)

Code
81093



Suspensions - 1.5m white pendant luminaires kit (9000-KIT3-1,5-W)
Material:plastic, colour:white.

Code
81006



Cable cover - White recessed cover (S-9001-R/6-W)
Material:PC, colour:white.

Code
81069



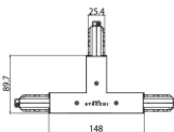
Suspensions - 5m white pendant luminaires kit (9000-KIT3-5-W)
Material:plastic, colour:white.

Code
81007



Tool - Cutter S-9000/T

Code
81005



Junction - Right black T junction - external (9014/B)
Type linear.
Material:PC, colour:black.

Finish	Code
Black	81055



Suspensions - White rigid suspension clip (S-9000-P2-W)
Material:plastic, colour:white.

Code
81018



		<p>Cable cover - Black recessed cover (S-9001-R/6-B) Material:PC, colour:black.</p>	<p>Code 81070</p>
		<p>Cable cover - White cover for recessed X junction (S-9017-R/6-W) Material:PC, colour:white.</p>	<p>Code 81081</p>
		<p>Bracket - Black stiffening bracket (S-9000/333-B) L=180mm, H=24mm, D=20mm. Material:Aluminium, colour:black RAL 9005, processing:Coating.</p>	<p>Finish Black Code 81026</p>
		<p>Cable cover - White cover for recessed junction (S-9010-R/6-W) Material:PC, colour:white.</p>	<p>Code 81072</p>
		<p>Suspensions - 1.5m black pendant luminaires kit (9000-KIT3-1,5-B) Material:plastic, colour:black.</p>	<p>Code 81008</p>
		<p>Junction - Black X junction (9017/B) Type linear. Material:PC, colour:black.</p>	<p>Finish Black Code 81064</p>
		<p>Cable cover - Black cover for recessed T junction (S-9013-R/6-B) Material:PC, colour:black.</p>	<p>Code 81079</p>
		<p>Cable cover Material:white.</p>	<p>Code 83249</p>



Bracket - Anodized stiffening bracket (S-9000/333)

L=180mm, H=24mm, D=26mm.

Material:Aluminium, colour:Anodised Aluminum, processing:Anodisation.

Finish	Code
	81024

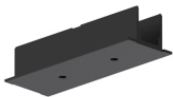


Bracket - White stiffening bracket (S-9000/333-W)

L=180mm, H=24mm, D=20mm.

Material:Aluminium, colour:white RAL 9010, processing:Coating.

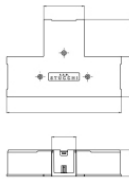
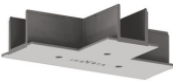
Finish	Code
	81025



Cable cover - Black cover for recessed junction (S-9010-R/6-B)

Material:PC, colour:black.

Code
81073



Cable cover - White cover for recessed T junction (S-9013-R/6-W)

Material:PC, colour:white.

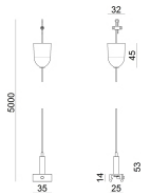
Code
81078



Suspensions - Black rigid suspension clip (S-9000-P2-B)

Material:plastic, colour:black.

Code
81019



Suspensions - 5m black pendant luminaire kit (9000-KIT3-5-B)

Material:plastic, colour:black.

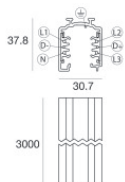
Code
81009



Cable cover

Material:black, colour:black.

Code
83250



Track

Length: 3000mm; Type of track: Standard.

Material:Aluminium, colour:White, processing:Coating.

Finish	Code
	83338



		<p>Cable cover Material:PC, colour:black.</p>	<p>Code <u>81076</u></p>
--	--	---	-------------------------------------

		<p>Closing cap - White gasket (S-9001/115-W) Material:white.</p>	<p>Code <u>81084</u></p>
--	--	--	-------------------------------------

		<p>Closing cap - Black gasket (S-9001/115-B) Material:black, colour:black.</p>	<p>Code <u>81085</u></p>
--	--	--	-------------------------------------

		<p>White three-phase/DALI adapter (9009/W)</p>	<p>Code <u>81094</u></p>
--	--	--	-------------------------------------

		<p>Black three-phase/DALI adapter (9009/B)</p>	<p>Code <u>81095</u></p>
--	--	--	-------------------------------------

		<p>Electronic accessory - TWIL-DALI controller for devices with DALI protocol installed on three-phase track. installation position: ceiling L=90mm, H=124mm, D=45mm. Material:ABS Plastic, colour:black.</p>	<p>Code <u>C-E700008</u></p>
--	--	---	---