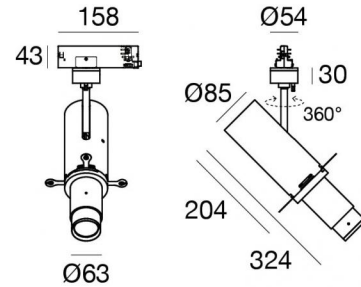


Pound Shaper_distance



Projectors | arrayLED 0 W DC - 30 W AC | CRI 98
82122W66



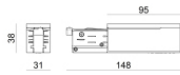
Technical data	
Type	Track
Installation position	Ceiling
Installation environment	Indoor
Light Source	LED
Circuit structure	arrayLED
Optics	Shaper Long Distance
Light emission direction	frontal
Nominal power	0 W DC
Total Power	30 W
Nominal input voltage	220 - 240 V AC
Input voltage range	198 - 264 V AC
CCT / Tone	3000 K
Colour rendering index	98 Ra
C.C. / C.V.	AC
Safety class	2
IP	IP20
Glow wire test	850°
Direct mounting on normally flammable surfaces	Yes
CE	Yes
Driver included	Driver
Dimmable article	Dimming on Board
Directional	Swivelling
total angle (vertical plane)	90 °
total angle (horizontal plane)	360 °
Tilting	No
Walk-over	No
Drive-over	No
Cable included	No
Resin potting	No
Type of light emission	Single emission
Net weight	1.6 Kg
Electrostatic discharge protection	Yes
Surge protection	2 KV

Finishing casing	
Material	Die-cast Aluminium EN AB - 46100
Colour	Black
Processing	Powder coating

Pound Shaper_distance

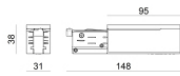


Pound Shaper_distance | Projectors | Accessories
82122W66



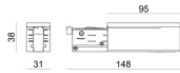
Power supply - White Right power supply header (9001/W)
Material:PC, colour:white.

Code
81033



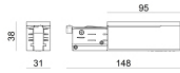
Power supply - White left power supply header (9002/W)
Material:PC, colour:white.

Code
81036



Power supply - Black left power supply header (9002/B)
Material:PC, colour:black.

Code
81037



Power supply - Black Right power supply header (9001/B)
Material:PC, colour:black.

Code
81034



Closing cap - White end cap 9004/W
Material:PC, colour:white.

Code
80999



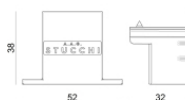
Closing cap - Black end cap 9004/B
Material:PC, colour:black.

Code
81000



Closing cap - Recessed white end cap 9004-R/W
Material:PC, colour:white.

Code
81002



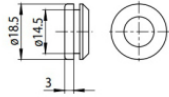
Closing cap - Recessed black end cap 9004-R/B
Material:PC, colour:black.

Code
81003

Pound Shaper_distance

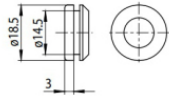


Pound Shaper_distance | Projectors | Accessories
82122W66



Closing cap - White gasket (S-9001/115-W)
Material:white.

Code
81084



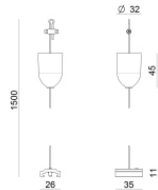
Closing cap - Black gasket (S-9001/115-B)
Material:black, colour:black.

Code
81085



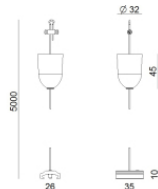
Ceiling rose - 1.5m white pendant luminaires kit + bracket (9000-KIT5-1,5-W)
Material:plastic, colour:white.

Code
81012



Ceiling rose - 1.5m black pendant luminaires kit + bracket ((9000-KIT5-1,5-B)
Material:plastic, colour:black.

Code
81014



Ceiling rose - 5m white pendant luminaires kit + bracket (9000-KIT5-5-W)
Material:plastic, colour:white.

Code
81013



Ceiling rose - 5m black pendant luminaires kit + bracket (9000-KIT5-5-B)
Material:plastic, colour:black.

Code
81015



Bracket - Anodized fixing bracket (S-9000/131)
L=35mm, H=14mm, D=24mm.
Material:Aluminium, colour:translucent.

Finish **Code**
Anod. Al. 81086



Bracket - Anodized stiffening bracket (S-9000/333)
L=180mm, H=24mm, D=26mm.
Material:Aluminium, colour:Anodised Aluminum, processing:Anodisation.

Finish **Code**
81024



Pound Shaper_distance | Projectors | Accessories
82122W66



Bracket - White stiffening bracket (S-9000/333-W)
L=180mm, H=24mm, D=20mm.
Material:Aluminium, colour:white RAL 9010, processing:Coating.

Finish	Code
White	81025



Bracket - Black stiffening bracket (S-9000/333-B)
L=180mm, H=24mm, D=20mm.
Material:Aluminium, colour:black RAL 9005, processing:Coating.

Finish	Code
Black	81026



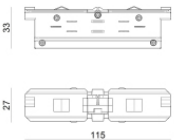
Bracket - White fixing bracket (S-9000/131-W)
L=35mm, H=14mm, D=24mm.
Material:Aluminium, colour:white, processing:Coating.

Finish	Code
White	81087



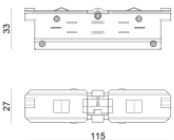
Bracket - Black fixing bracket (S-9000/131-B)
L=35mm, H=14mm, D=24mm.
Material:Aluminium, colour:Black, processing:Coating.

Finish	Code
Black	81088



Junction - White electrical junction - internal (9003/W)
Type linear.
Material:PC, colour:white.

Finish	Code
White	81039



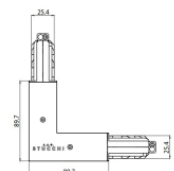
Junction - Black electrical junction - internal (9003/B)
Type linear.
Material:PC, colour:black.

Finish	Code
Black	81040



Junction - White power supply junction - central (9010/W)
Type linear.
Material:PC, colour:white.

Finish	Code
White	81042



Junction - White L junction - internal (9011/W)
Type linear.
Material:PC, colour:white.

Finish	Code
White	81045

Pound Shaper_distance



Pound Shaper_distance | Projectors | Accessories
82122W66

		<p>Junction - White L junction - external (9012/W) Type linear. Material:PC, colour:white.</p>	Finish	Code
White	81048			
		<p>Junction - Flexible white junction (9018/W) Type flexible curve. Material:PC, colour:white.</p>	Finish	Code
White	81066			
		<p>Junction - White X junction (9017/W) Type linear. Material:PC, colour:white.</p>	Finish	Code
White	81063			
		<p>Junction - Left white T junction - external (9013/W) Type linear. Material:PC, colour:white.</p>	Finish	Code
White	81051			
		<p>Junction - Right white T junction - external (9014/W) Type linear. Material:PC, colour:white.</p>	Finish	Code
White	81054			
		<p>Junction - Left white T junction - internal (9015/W) Type linear. Material:PC, colour:white.</p>	Finish	Code
White	81057			
		<p>Junction - Right White T junction - internal (9016/W) Type linear. Material:PC, colour:white.</p>	Finish	Code
White	81060			
		<p>Junction - Black power supply junction - centrale (9010/B) Type linear. Material:PC, colour:black.</p>	Finish	Code
Black	81043			



Pound Shaper_distance | Projectors | Accessories
82122W66

		<p>Junction - Black L junction - internal (9011/B) Type linear. Material:PC, colour:black.</p>	<p>Finish Black</p>	<p>Code 81046</p>
		<p>Junction - Black L junction - external (9012/B) Type linear. Material:PC, colour:black.</p>	<p>Finish Black</p>	<p>Code 81049</p>
		<p>Junction - Flexible black junction (9018/B) Type flexible curve. Material:PC, colour:black.</p>	<p>Finish Black</p>	<p>Code 81067</p>
		<p>Junction - Black X junction (9017/B) Type linear. Material:PC, colour:black.</p>	<p>Finish Black</p>	<p>Code 81064</p>
		<p>Junction - Black left T junction - external (9013/B) Type linear. Material:PC, colour:black.</p>	<p>Finish Black</p>	<p>Code 81052</p>
		<p>Junction - Right black T junction - external (9014/B) Type linear. Material:PC, colour:black.</p>	<p>Finish Black</p>	<p>Code 81055</p>
		<p>Junction - Left black T junction - internal (9015/B) Type linear. Material:PC, colour:black.</p>	<p>Finish Black</p>	<p>Code 81058</p>
		<p>Junction - Right black T junction - internal (9016/B) Type linear. Material:PC, colour:black.</p>	<p>Finish Black</p>	<p>Code 81061</p>



Pound Shaper_distance | Projectors | Accessories
82122W66



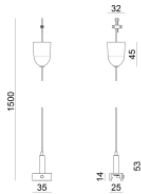
Suspensions - 1.5m white pendant luminaires kit (9000-KIT3-1,5-W)
Material:plastic, colour:white.

Code
81006



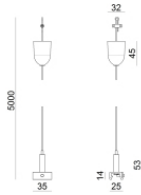
Suspensions - 5m white pendant luminaires kit (9000-KIT3-5-W)
Material:plastic, colour:white.

Code
81007



Suspensions - 1.5m black pendant luminaires kit (9000-KIT3-1,5-B)
Material:plastic, colour:black.

Code
81008



Suspensions - 5m black pendant luminaires kit (9000-KIT3-5-B)
Material:plastic, colour:black.

Code
81009



Suspensions - White rigid suspension clip (S-9000-P2-W)
Material:plastic, colour:white.

Code
81018



Suspensions - Black rigid suspension clip (S-9000-P2-B)
Material:plastic, colour:black.

Code
81019



Suspensions - White rigid suspension 1m (S-9000-P3-W)
Material:plastic, colour:white.

Code
81021



Suspensions - Black rigid suspension 1m (S-9000-P3-B)
Material:plastic, colour:black.

Code
81022

Pound Shaper_distance



Pound Shaper_distance | Projectors | Accessories
82122W66

		<p>Cable cover - White recessed cover (S-9001-R/6-W) Material:PC, colour:white.</p>	<p>Code <u>81069</u></p>
		<p>Cable cover - White cover for recessed junction (S-9010-R/6-W) Material:PC, colour:white.</p>	<p>Code <u>81072</u></p>
		<p>Cable cover - White cover for recessed L junction (S-9011-R/6-W) Material:PC, colour:white.</p>	<p>Code <u>81075</u></p>
		<p>Cable cover - White cover for recessed T junction (S-9013-R/6-W) Material:PC, colour:white.</p>	<p>Code <u>81078</u></p>
		<p>Cable cover - White cover for recessed X junction (S-9017-R/6-W) Material:PC, colour:white.</p>	<p>Code <u>81081</u></p>
		<p>Cable cover - Black recessed cover (S-9001-R/6-B) Material:PC, colour:black.</p>	<p>Code <u>81070</u></p>
		<p>Cable cover - Black cover for recessed junction (S-9010-R/6-B) Material:PC, colour:black.</p>	<p>Code <u>81073</u></p>
		<p>Cable cover Material:PC, colour:black.</p>	<p>Code <u>81076</u></p>



Pound Shaper_distance | Projectors | Accessories
82122W66

		<p>Cable cover - Black cover for recessed T junction (S-9013-R/6-B) Material:PC, colour:black.</p>	<p>Code <u>81079</u></p>
		<p>Cable cover - Black cover for recessed X junction (S-9017-R/6-B) Material:PC, colour:black.</p>	<p>Code <u>81082</u></p>
		<p>Cable cover Material:white.</p>	<p>Code <u>83249</u></p>
		<p>Cable cover Material:black, colour:black.</p>	<p>Code <u>83250</u></p>
		<p>White three-phase/DALI adapter (9009/W)</p>	<p>Code <u>81094</u></p>
		<p>White three-phase adapter (9009-4/W)</p>	<p>Code <u>81091</u></p>
		<p>Black three-phase/DALI adapter (9009/B)</p>	<p>Code <u>81095</u></p>
		<p>Black three-phase adapter (9009-4/B)</p>	<p>Code <u>81093</u></p>

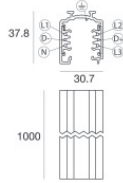


	Tool - Cutter S-9000/T	Code 81005	
	Tool - Gobo holder Material:Aluminium, colour:black, processing:Anodisation.	Code 99853	
		Track - Three-phase Recessed White DALI Track, 1 m (9000-1/W-R) Length: 1000mm; Type of track: Standard. Material:Aluminium, colour:White, processing:Coating.	Finish White Code 80990
		Track - Three-phase Recessed White DALI Track, 2 m (9000-2/W-R) Length: 2000mm; Type of track: Standard. Material:Aluminium, colour:White, processing:Coating.	Finish White Code 80991
		Track - Three-phase Recessed White DALI Track, 3 m (9000-3/W-R) Length: 3000mm; Type of track: Standard. Material:Aluminium, colour:White, processing:Coating.	Finish White Code 80992
		Track - Three-phase Recessed Grey DALI Track, 1 m (9000-1/B-R) Length: 1000mm; Type of track: Standard. Material:Aluminium, colour:Black, processing:Coating.	Finish Black Code 80993
		Track - Three-phase Recessed Black DALI Track, 2 m (9000-1/B-R) Length: 2000mm; Type of track: Standard. Material:Aluminium, colour:Black, processing:Coating.	Finish Black Code 80994
		Track - Three-phase Recessed Black DALI Track, 3 m (9000-3/B-R) Length: 3000mm; Type of track: Standard. Material:Aluminium, colour:Black, processing:Coating.	Finish Black Code 80995

Pound Shaper_distance

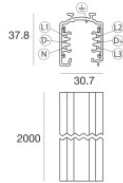


Pound Shaper_distance | Projectors | Accessories
82122W66



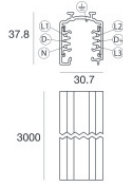
Track
Length: 1000mm; Type of track: Standard.
Material:Aluminium, colour:White, processing:Coating.

Finish	Code
White	83336



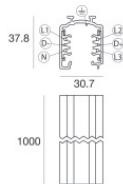
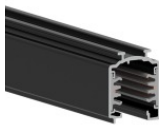
Track
Length: 2000mm; Type of track: Standard.
Material:Aluminium, colour:White, processing:Coating.

Finish	Code
White	83337



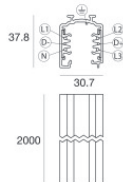
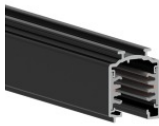
Track
Length: 3000mm; Type of track: Standard.
Material:Aluminium, colour:White, processing:Coating.

Finish	Code
White	83338



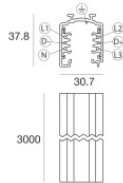
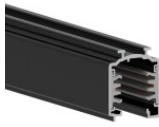
Track
Length: 1000mm; Type of track: Standard.
Material:Aluminium, colour:Black, processing:Coating.

Finish	Code
Black	83339



Track
Length: 2000mm; Type of track: Standard.
Material:Aluminium, colour:Black, processing:Coating.

Finish	Code
Black	83340



Track
Length: 3000mm; Type of track: Standard.
Material:Aluminium, colour:Black, processing:Coating.

Finish	Code
Black	83341