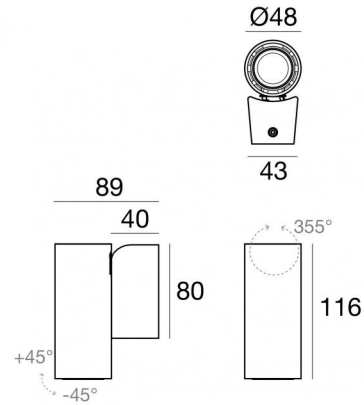


Pound_Wall



Wall Lights | 198-264 V AC /186-275 V DC
1 arrayLED 6.5 W DC - 8.5 W AC | CRI 90
81995M30



| Technical data | |
|--|-----------------|
| Type | Surface |
| Installation position | Wall lights |
| Installation environment | Indoor |
| Light Source | LED |
| Circuit structure | arrayLED |
| Optics | Flood |
| Light emission direction | downward |
| Nominal power | 6.5 W DC |
| Total Power | 8.5 W |
| Source lumens | 715 lm |
| Nominal input voltage | 220 - 240 V AC |
| Input voltage range | 198 - 264 V AC |
| Frequency | 50 - 60 Hz |
| CCT / Tone | 2700 K |
| Colour rendering index | 90 Ra |
| C.C. / C.V. | AC |
| Safety class | 1 |
| IP | IP20 |
| Glow wire test | 850° |
| Direct mounting on normally flammable surfaces | Yes |
| CE | Yes |
| Driver included | Driver |
| Dimmable article | No |
| Directional | Swivelling |
| total angle (vertical plane) | 90 ° |
| total angle (horizontal plane) | 355 ° |
| Tilting | No |
| Walk-over | No |
| Drive-over | No |
| Cable included | No |
| Resin potting | No |
| Type of light emission | Single emission |
| Net weight | 0.5 Kg |
| Electrostatic discharge protection | Yes |
| Surge protection | 2 KV |
| Optics technology | Anti - Glare |

Finishing casing

| | |
|------------|----------------------------------|
| Material | Die-cast Aluminium EN AB - 46100 |
| Colour | White |
| Processing | Powder coating |

The driver contained in the device complies with IEC 61347-2-13 annex J, and can therefore be powered by centralized power systems.



Wall Lights | 198-264 V AC /186-275 V DC | 1 arrayLED 6.5 W DC - 8.5 W AC | CRI 90 | Base
81995M30

Single emission wall lights for indoor application. The super warm white LED light source with a flood light distribution is composed of 1 arrayed LEDs with CCT of 2700 K and a CRI 90; the source luminous flux is 715 lm, with a 110.0 lm/W nominal luminous efficacy.

The device body is made of die-cast aluminium en ab - 46100 and features a white finish, processed by means of powder coating. The ingress protection degree is IP20; the total weight is of 0.5 kg.

The total absorbed power is 8.5 W.

The device features protection class I and can be wall lights-mounted.

Compliant with the EN 60598-1 standard and its specific provisions.

Energy efficiency class

This product contains a light source of energy efficiency class F.

Illuminotechnical Features

| | |
|--|----------------|
| Light Output Ratio (LOR) | 78 % |
| Source lumens | 715 lm |
| Delivered lumens | 562 lm |
| Consumption | 8.5 W |
| Luminaire efficacy | 66 lm/W |
| Colour temperature | 2700 K |
| Standard Deviation of Colour Matching | 3 Step MacAdam |
| Colour rendering index | 90 Ra |
| Standard Operating Ambient Temperature | -20 / +50°C |
| Ordinary temperature on the glass | 40°C |

LED Life / Failure Ratio

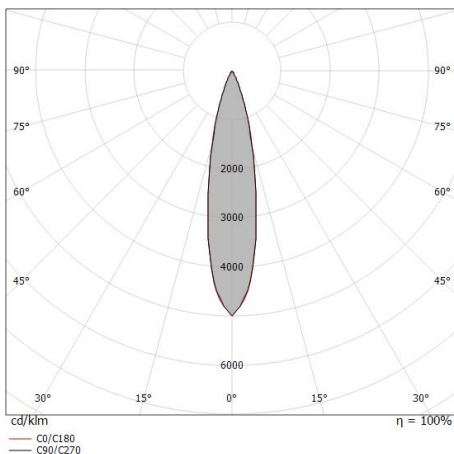
L70 B10 C0 134020h (at Tj 65 Ta 25)

UGR

| | |
|-------------------|----------|
| UGR axial | 14.1 |
| UGR transversal | 14.1 |
| X=4H Y=8H | S=0.25H |
| Reflection factor | 70/50/20 |

OPTICAL

| | |
|-----------------------------|-------------|
| C0/C180 optics | 22° |
| Light distribution simmetry | Symmetrical |



| Distance [m] | Cone diameter [m] | illuminance [lx] |
|--------------|-------------------|---------------------------|
| 0.5 | 0.20 | E(0°) 11241 E(C0) 5365 |
| 1.0 | 0.39 | E(0°) 2810 E(C0) 1341 |
| 1.5 | 0.59 | E(0°) 1249 E(C0) 596 |
| 2.0 | 0.78 | E(0°) 703 E(C0) 335 |
| 2.5 | 0.98 | E(0°) 450 E(C0) 215 |
| 3.0 | 1.18 | E(0°) 312 E(C0) 149 |

Distance [m] Cone diameter [m] illuminance [lx]
 — C0/C180 (Half-peak divergence: 22.2°)



Optics
Light distribution: spot,Cover material: uv resistant polycarbonate

Code
99805



Optics
Light distribution: medium flood,Cover material: ,uv resistant polycarbonate,uv resistant polycarbonate,uv resistant polycarbonate

Code
99806



Optics
Light distribution: flood,Cover material: ,uv resistant polycarbonate,uv resistant polycarbonate,uv resistant polycarbonate

Code
99807



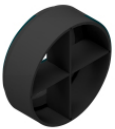
Diffuser
Diffuser Type: elliptical filter.
Material:Pom-C, colour:Black.

Code
99775



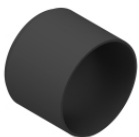
Anti-glare
Anti-glare Type: honeycomb louvre.
Material:Pom-C, colour:Black.

Code
99776



Anti-glare
Anti-glare Type: cross louvres.
Material:Pom-C, colour:Black.

Code
99777



Anti-glare
Anti-glare Type: cylindrical screen.
Material:Pom-C, colour:Black.

Code
99774



Anti-glare
Anti-glare Type: 45° cylindrical screen.
Material:Pom-C, colour:Black.

Code
99773