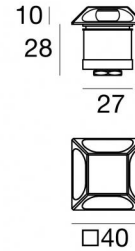


Alcor_Q4 316



Uplights | 1 x powerLED 1.5 W DC 500 mA | CRI 80
81751N18



Technical data	
Type	Semi-recessed - -
Installation position	Floor
Installation environment	Outdoor
Light Source	LED
Circuit structure	powerLED
Optics	Radial Multidirectional emission
Light emission direction	external
Nominal power	1.5 W DC
Source lumens	227 lm
Input voltage range	500mA
CCT / Tone	4000 K
Colour rendering index	80 Ra
C.C. / C.V.	CC
Safety class	3
IP	IP67
IK	IK10
Glow wire test	850°
Direct mounting on normally flammable surfaces	Yes
CE	Yes
Driver included	No
Dimmable article	DALI - 1-10V
Directional	No
Tilting	No
Walk-over	Yes
Drive-over	2000 Kg
Cable included	Yes
Cable length	1 m
Resin potting	Yes
Type of light emission	Multiple emission
Net weight	0.158 Kg
Electrostatic discharge protection	No
Surge protection	No
Product technological characteristics	TVS

Finishing casing

Material	AISI 316L steel
Colour	steel
Processing	Brushing

Electronics



89423
On/Off Driver 198~264V AC / 176~275V DC (1 - 3 art.)



89422
On/Off Driver 198~264V AC / 176~275V DC (1 - 2 art.)



C-E200007
On/Off Driver 198~264V AC / 180~275V DC (1 - 6 art.)



Uplights | 1 x powerLED 1.5 W DC 500 mA | CRI 80 | Base 81751N18

Multiple emission uplights for outdoor application. The natural white LED light source with a radial multidirectional emission light distribution is composed of 1 powerLED LEDs with CCT of 4000 K and a CRI 80; the source luminous flux is 227 lm, with a 151.3 lm/W nominal luminous efficacy.

The device body is made of aisi 316l steel and features a steel finish, processed by means of brushing. The ingress protection degree is IP67; the total weight is of 0.158 kg. The power supply driver is not provided and is to be ordered separately.

The total absorbed power is 1.5 W. The power supply cable is included and features a 1 m length.

The device features protection class III and can be floor-mounted with an outer casing, code 84918(for concrete or masonry).

Compliant with the EN 60598-1 standard and its specific provisions.

Energy efficiency class

This product contains a light source of energy efficiency class D.

Illuminotecnical Features

Light Output Ratio (LOR)	40 %
Source lumens	227 lm
Delivered lumens	91 lm
Consumption	1,5 W
Luminaire efficacy	91 lm/W
Colour temperature	4000 K
Standard Deviation of Colour Matching	1.5 Step
Colour rendering index	80 Ra

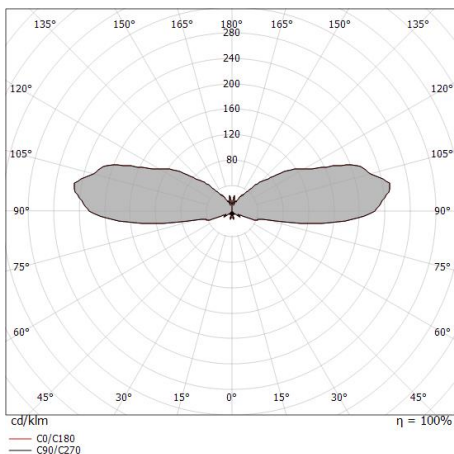
Standard Operating Ambient Temperature	-20 / +50°C
Ordinary temperature on the glass	40°C

LED Life / Failure Ratio

L70 B10 C0 361980h (at Tj 60 Ta 25)

OPTICAL

C0/C180 optics	180°
Light distribution simmetry	Symmetrical





Alcor_Q4 316 | Step Lights | Accessories
81751N18



Outer casing

installation position: floor, land; type of installation: masonry L=87mm, H=60mm, D=60mm.

Material:ABS Plastic, colour:black.

Code

84918