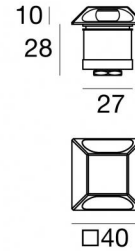
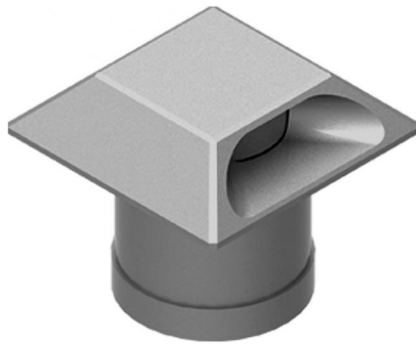


# Alcor\_Q2 316



Uplights | 1 x powerLED 1.5 W DC 500 mA | CRI 80  
81750N18



| Technical data                                 |                                |
|--|--------------------------------|
| Type   | Semi-recessed - -              |
| Installation position                          | Floor                          |
| Installation environment                       | Outdoor                        |
| Light Source                                   | LED                            |
| Circuit structure                              | powerLED                       |
| Optics   | Radial Bi-directional emission |
| Light emission direction                       | external                       |
| Nominal power                                  | 1.5 W DC                       |
| Source lumens                                  | 227 lm                         |
| Input voltage range                            | 500mA                          |
| CCT / Tone                                     | 4000 K                         |
| Colour rendering index                         | 80 Ra                          |
| C.C. / C.V.                                    | CC                             |
| Safety class                                   | 3                              |
| IP   | IP67                           |
| IK   | IK10                           |
| Glow wire test                                 | 850°                           |
| Direct mounting on normally flammable surfaces | Yes                            |
| CE   | Yes                            |
| Driver included                                | No                             |
| Dimmable article                               | DALI - 1-10V                   |
| Directional                                    | No                             |
| Tilting  | No                             |
| Walk-over                                      | Yes                            |
| Drive-over                                     | 2000 Kg                        |
| Cable included                                 | Yes                            |
| Cable length                                   | 1 m                            |
| Resin potting                                  | Yes                            |
| Type of light emission                         | Double emission                |
| Net weight                                     | 0.158 Kg                       |
| Electrostatic discharge protection             | No                             |
| Surge protection                               | No                             |
| Product technological characteristics          | TVS                            |

## Finishing casing

|            |                 |
|------------|-----------------|
| Material   | AISI 316L steel |
| Colour     | steel           |
| Processing | Brushing        |

## Electronics



89423  
On/Off Driver 198~264V AC / 176~275V DC (1 - 3 art.)



89422  
On/Off Driver 198~264V AC / 176~275V DC (1 - 2 art.)



C-E200007  
On/Off Driver 198~264V AC / 180~275V DC (1 - 6 art.)



Uplights | 1 x powerLED 1.5 W DC 500 mA | CRI 80 | Base  
81750N18

Double emission uplights for outdoor application. The natural white LED light source with a radial bi-directional emission light distribution is composed of 1 powerLED LEDs with CCT of 4000 K and a CRI 80; the source luminous flux is 227 lm, with a 151.3 lm/W nominal luminous efficacy.

The device body is made of aisi 316l steel and features a steel finish, processed by means of brushing. The ingress protection degree is IP67; the total weight is of 0.158 kg. The power supply driver is not provided and is to be ordered separately.

The total absorbed power is 1.5 W. The power supply cable is included and features a 1 m length.

The device features protection class III and can be floor-mounted with an outer casing, code 84918(for concrete or masonry).

Compliant with the EN 60598-1 standard and its specific provisions.

### Energy efficiency class

This product contains a light source of energy efficiency class D.

### Illuminotechnical Features

|                                       |          |
|---------------------------------------|----------|
| Light Output Ratio (LOR)              | 20 %     |
| Source lumens                         | 227 lm   |
| Delivered lumens                      | 46 lm    |
| Consumption                           | 1,5 W    |
| Luminaire efficacy                    | 46 lm/W  |
| Colour temperature                    | 4000 K   |
| Standard Deviation of Colour Matching | 1.5 Step |
| Colour rendering index                | 80 Ra    |

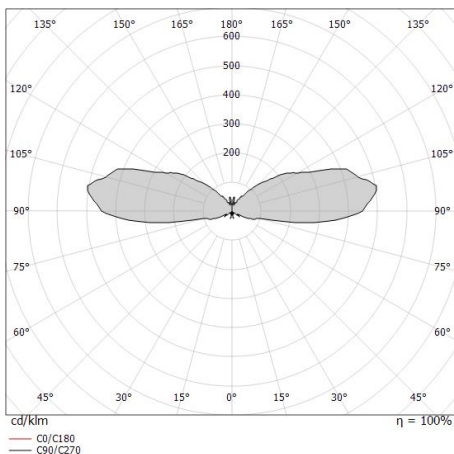
|  |             |
|--|-------------|
| Standard Operating Ambient Temperature | -20 / +50°C |
| Ordinary temperature on the glass      | 40°C        |

### LED Life / Failure Ratio

L70 B10 C0 361980h (at Tj 60 Ta 25 )

### OPTICAL

|                             |             |
|-----------------------------|-------------|
| C0/C180 optics              | 180°        |
| Light distribution symmetry | Symmetrical |





Alcor\_Q2 316 | Step Lights | Accessories  
**81750N18**



Outer casing

installation position: floor, land; type of installation: masonry L=87mm, H=60mm, D=60mm.

Material:ABS Plastic, colour:black.

**Code**

84918