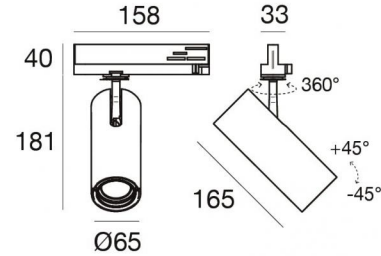




Projectors | 176-264 V | 1 arrayLED 26 W DC 700 mA | CRI 98
81634M15



Technical data	
Type	Track
Installation position	Ceiling
Installation environment	Indoor
Light Source	LED
Circuit structure	arrayLED
Optics	Spot
Light emission direction	frontal
Nominal power	26 W DC
Source lumens	3204 lm
Nominal input voltage	220 - 240 V AC
Input voltage range	176 - 264 V AC
Frequency	50 - 60 Hz
CCT / Tone	2700 K
Colour rendering index	98 Ra
C.C. / C.V.	AC
Safety class	2
IP	IP20
Glow wire test	850°
Direct mounting on normally flammable surfaces	Yes
CE	Yes
Driver included	Driver
Dimmable article	No
Directional	Swivelling
total angle (vertical plane)	90 °
total angle (horizontal plane)	360 °
Tilting	No
Walk-over	No
Drive-over	No
Cable included	No
Resin potting	No
Type of light emission	Single emission
Net weight	0.612 Kg
Electrostatic discharge protection	Yes
Surge protection	2 KV
Optics technology	Anti - Glare

Finishing casing	
Material	Die-cast Aluminium EN AB - 46100
Colour	Black
Processing	Powder coating



Projectors | 176-264 V | 1 arrayLED 26 W DC 700 mA | CRI 98 | Base
81634M15

Single emission projectors for indoor application. The super warm white LED light source with a spot light distribution is composed of 1 arrayed LEDs with CCT of 2700 K and a CRI 98; the source luminous flux is 3204 lm, with a 123.2 lm/W nominal luminous efficacy.

The device body is made of die-cast aluminium en ab - 46100 and features a black finish, processed by means of powder coating. The ingress protection degree is IP20; the total weight is of 0.612 kg.

The total absorbed power is 29 W.

The device features protection class II and can be ceiling-mounted.

Compliant with the EN 60598-1 standard and its specific provisions.

Energy efficiency class

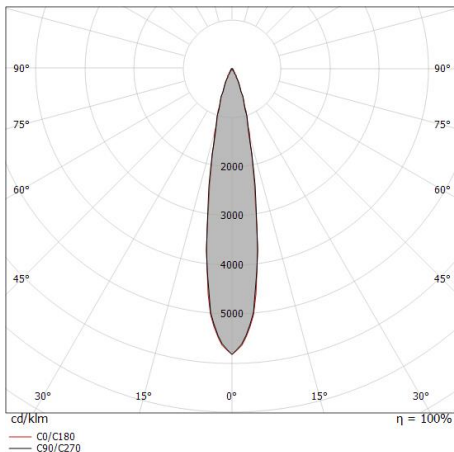
This product contains a light source of energy efficiency class E.

Illuminotechnical Features

Source lumens	3204 lm
Colour temperature	2700 K
Standard Deviation of Colour Matching	2 Step MacAdam
Colour rendering index	98 Ra
Black Body Locus	On
Standard Operating Ambient Temperature	-20 / +50°C
Ordinary temperature on the glass	40°C

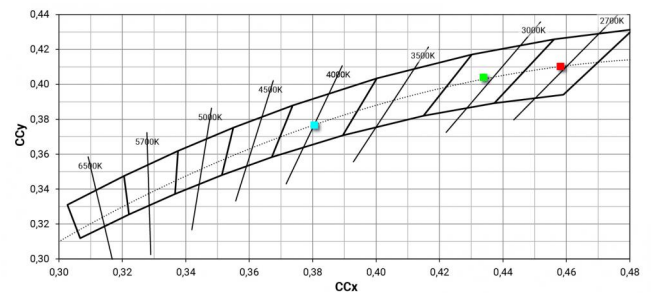
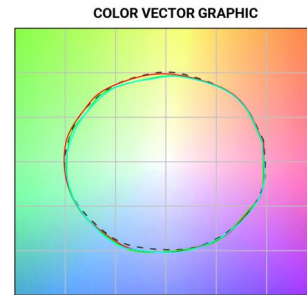
LED Life / Failure Ratio

L70 B10 C0 252000h (at Tj 65 Ta 25)



Distance [m]	Cone diameter [m]	illuminance [lx]
0.5	0.17 0.17	E(0°) 42834 E(C90) 9.7° 20656 E(C0) 9.6° 20644
1.0	0.34 0.34	E(0°) 10709 E(C90) 9.7° 5164 E(C0) 9.6° 5161
1.5	0.51 0.51	E(0°) 4759 E(C90) 9.7° 2295 E(C0) 9.6° 2294
2.0	0.68 0.68	E(0°) 2677 E(C90) 9.7° 1291 E(C0) 9.6° 1290
2.5	0.85 0.85	E(0°) 1713 E(C90) 9.7° 826 E(C0) 9.6° 826
3.0	1.03 1.01	E(0°) 1190 E(C90) 9.7° 574 E(C0) 9.6° 573

— C0/C180 (Half-peak divergence: 19.2°)
— C90/C270 (Half-peak divergence: 19.4°)





Optics
Light distribution: spot,Cover material: uv resistant polycarbonate

Code
99827



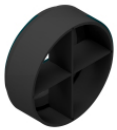
Optics
Light distribution: medium flood,Cover material: uv resistant polycarbonate

Code
99828



Optics
Light distribution: flood,Cover material: uv resistant polycarbonate

Code
99829



Anti-glare
Anti-glare Type: cross louvres.
Material:Pom-C, colour:Black.

Code
99779



Anti-glare
Anti-glare Type: honeycomb louvre.
Material:Pom-C, colour:Black.

Code
99780



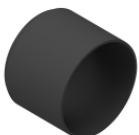
Diffuser
Diffuser Type: elliptical filter.
Material:Pom-C, colour:Black.

Code
99781



Anti-glare
Anti-glare Type: 45° cylindrical screen.
Material:Pom-C, colour:Black.

Code
99782



Anti-glare
Anti-glare Type: cylindrical screen.
Material:Pom-C, colour:Black.

Code
99783



		<p>Track Length: 1000mm; Type of track: Standard. Material:Aluminium, colour:White, processing:Coating.</p>	<table border="1"> <thead> <tr> <th>Finish</th> <th>Code</th> </tr> </thead> <tbody> <tr> <td>White</td> <td>83336</td> </tr> </tbody> </table>	Finish	Code	White	83336
Finish	Code						
White	83336						
		<p>Track Length: 1000mm; Type of track: Standard. Material:Aluminium, colour:Black, processing:Coating.</p>	<table border="1"> <thead> <tr> <th>Finish</th> <th>Code</th> </tr> </thead> <tbody> <tr> <td>Black</td> <td>83339</td> </tr> </tbody> </table>	Finish	Code	Black	83339
Finish	Code						
Black	83339						
		<p>Track Length: 3000mm; Type of track: Standard. Material:Aluminium, colour:Black, processing:Coating.</p>	<table border="1"> <thead> <tr> <th>Finish</th> <th>Code</th> </tr> </thead> <tbody> <tr> <td>Black</td> <td>83341</td> </tr> </tbody> </table>	Finish	Code	Black	83341
Finish	Code						
Black	83341						
		<p>Track - Three-phase Recessed White DALI Track, 2 m (9000-2/W-R) Length: 2000mm; Type of track: Standard. Material:Aluminium, colour:White, processing:Coating.</p>	<table border="1"> <thead> <tr> <th>Finish</th> <th>Code</th> </tr> </thead> <tbody> <tr> <td>White</td> <td>80991</td> </tr> </tbody> </table>	Finish	Code	White	80991
Finish	Code						
White	80991						
		<p>Track - Three-phase Recessed Grey DALI Track, 1 m (9000-1/B-R) Length: 1000mm; Type of track: Standard. Material:Aluminium, colour:Black, processing:Coating.</p>	<table border="1"> <thead> <tr> <th>Finish</th> <th>Code</th> </tr> </thead> <tbody> <tr> <td>Black</td> <td>80993</td> </tr> </tbody> </table>	Finish	Code	Black	80993
Finish	Code						
Black	80993						
		<p>Track - Three-phase Recessed White DALI Track, 3 m (9000-3/W-R) Length: 3000mm; Type of track: Standard. Material:Aluminium, colour:White, processing:Coating.</p>	<table border="1"> <thead> <tr> <th>Finish</th> <th>Code</th> </tr> </thead> <tbody> <tr> <td>White</td> <td>80992</td> </tr> </tbody> </table>	Finish	Code	White	80992
Finish	Code						
White	80992						
		<p>Power supply - White Right power supply header (9001/W) Material:PC, colour:white.</p>	<table border="1"> <thead> <tr> <th>Code</th> </tr> </thead> <tbody> <tr> <td>81033</td> </tr> </tbody> </table>	Code	81033		
Code							
81033							
		<p>Power supply - Black left power supply header (9002/B) Material:PC, colour:black.</p>	<table border="1"> <thead> <tr> <th>Code</th> </tr> </thead> <tbody> <tr> <td>81037</td> </tr> </tbody> </table>	Code	81037		
Code							
81037							



		<p>Junction - White power supply junction - central (9010/W) Type linear. Material:PC, colour:white.</p>	<p>Finish White</p>	<p>Code 81042</p>
		<p>Junction - Black power supply junction - centrale (9010/B) Type linear. Material:PC, colour:black.</p>	<p>Finish Black</p>	<p>Code 81043</p>
		<p>Track - Three-phase Recessed Black DALI Track, 2 m (9000-1/B-R) Length: 2000mm; Type of track: Standard. Material:Aluminium, colour:Black, processing:Coating.</p>	<p>Finish Black</p>	<p>Code 80994</p>
		<p>Power supply - White left power supply header (9002/W) Material:PC, colour:white.</p>		<p>Code 81036</p>
		<p>Junction - Left white T junction - external (9013/W) Type linear. Material:PC, colour:white.</p>	<p>Finish White</p>	<p>Code 81051</p>
		<p>Junction - Black left T junction - external (9013/B) Type linear. Material:PC, colour:black.</p>	<p>Finish Black</p>	<p>Code 81052</p>
		<p>Track Length: 2000mm; Type of track: Standard. Material:Aluminium, colour:White, processing:Coating.</p>	<p>Finish White</p>	<p>Code 83337</p>
		<p>Track Length: 2000mm; Type of track: Standard. Material:Aluminium, colour:Black, processing:Coating.</p>	<p>Finish Black</p>	<p>Code 83340</p>



		<p>Junction - Flexible white junction (9018/W) Type flexible curve. Material:PC, colour:white.</p>	<p>Finish White</p>	<p>Code 81066</p>
		<p>Closing cap - White end cap 9004/W Material:PC, colour:white.</p>	<p>Code 80999</p>	<p>Code 80999</p>
		<p>Junction - White electrical junction - internal (9003/W) Type linear. Material:PC, colour:white.</p>	<p>Finish White</p>	<p>Code 81039</p>
		<p>Track - Three-phase Recessed Black DALI Track, 3 m (9000-3/B-R) Length: 3000mm; Type of track: Standard. Material:Aluminium, colour:Black, processing:Coating.</p>	<p>Finish Black</p>	<p>Code 80995</p>
		<p>Junction - Right white T junction - external (9014/W) Type linear. Material:PC, colour:white.</p>	<p>Finish White</p>	<p>Code 81054</p>
		<p>Junction - Black electrical junction - internal (9003/B) Type linear. Material:PC, colour:black.</p>	<p>Finish Black</p>	<p>Code 81040</p>
		<p>Junction - White L junction - internal (9011/W) Type linear. Material:PC, colour:white.</p>	<p>Finish White</p>	<p>Code 81045</p>
		<p>Junction - Flexible black junction (9018/B) Type flexible curve. Material:PC, colour:black.</p>	<p>Finish Black</p>	<p>Code 81067</p>



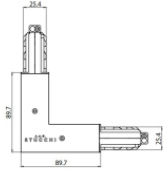
		<p>Power supply - Black Right power supply header (9001/B) Material:PC, colour:black.</p>	<p>Code 81034</p>
		<p>Junction - White X junction (9017/W) Type linear. Material:PC, colour:white.</p>	<p>Finish White Code 81063</p>
		<p>Track - Three-phase Recessed White DALI Track, 1 m (9000-1/W-R) Length: 1000mm; Type of track: Standard. Material:Aluminium, colour:White, processing:Coating.</p>	<p>Finish White Code 80990</p>
		<p>Closing cap - Black end cap 9004/B Material:PC, colour:black.</p>	<p>Code 81000</p>
		<p>Junction - Left black T junction - internal (9015/B) Type linear. Material:PC, colour:black.</p>	<p>Finish Black Code 81058</p>
		<p>Junction - Right black T junction - internal (9016/B) Type linear. Material:PC, colour:black.</p>	<p>Finish Black Code 81061</p>
		<p>Closing cap - Recessed white end cap 9004-R/W Material:PC, colour:white.</p>	<p>Code 81002</p>
		<p>Junction - Left white T junction - internal (9015/W) Type linear. Material:PC, colour:white.</p>	<p>Finish White Code 81057</p>



		<p>Junction - Black L junction - internal (9011/B) Type linear. Material:PC, colour:black.</p>	<p>Finish Black</p> <p>Code 81046</p>
		<p>Junction - Right White T junction - internal (9016/W) Type linear. Material:PC, colour:white.</p>	<p>Finish White</p> <p>Code 81060</p>
		<p>Junction - Black L junction - external (9012/B) Type linear. Material:PC, colour:black.</p>	<p>Finish Black</p> <p>Code 81049</p>
		<p>Ceiling rose - 5m black pendant luminaire kit + bracket (9000-KIT5-5-B) Material:plastic, colour:black.</p>	<p>Code 81015</p>
		<p>Suspensions - White rigid suspension 1m (S-9000-P3-W) Material:plastic, colour:white.</p>	<p>Code 81021</p>
		<p>Suspensions - Black rigid suspension 1m (S-9000-P3-B) Material:plastic, colour:black.</p>	<p>Code 81022</p>
		<p>Closing cap - Recessed black end cap 9004-R/B Material:PC, colour:black.</p>	<p>Code 81003</p>
		<p>Ceiling rose - 5m white pendant luminaire kit + bracket (9000-KIT5-5-W) Material:plastic, colour:white.</p>	<p>Code 81013</p>

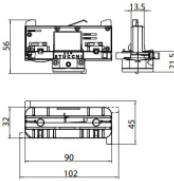


	<p>Ceiling rose - 1.5m white pendant luminaires kit + bracket (9000-KIT5-1,5-W) Material:plastic, colour:white.</p>	<p>Code 81012</p>	
		<p>Ceiling rose - 1.5m black pendant luminaires kit + bracket ((9000-KIT5-1,5-B) Material:plastic, colour:black.</p>	<p>Code 81014</p>
		<p>Bracket - Anodized fixing bracket (S-9000/131) L=35mm, H=14mm, D=24mm. Material:Aluminium, colour:translucent.</p>	<p>Finish Anod. Al. Code 81086</p>
		<p>Bracket - White fixing braket (S-9000/131-W) L=35mm, H=14mm, D=24mm. Material:Aluminium, colour:white, processing:Coating.</p>	<p>Finish White Code 81087</p>
		<p>Bracket - Black fixing braket (S-9000/131-B) L=35mm, H=14mm, D=24mm. Material:Aluminium, colour:Black, processing:Coating.</p>	<p>Finish Black Code 81088</p>
		<p>Cable cover - White cover for recessed L junction (S-9011-R/6-W) Material:PC, colour:white.</p>	<p>Code 81075</p>
		<p>Cable cover - Black cover for recessed X junction (S-9017-R/6-B) Material:PC, colour:black.</p>	<p>Code 81082</p>
		<p>White three-phase adapter (9009-4/W)</p>	<p>Code 81091</p>



Junction - White L junction - external (9012/W)
Type linear.
Material:PC, colour:white.

Finish	Code
White	81048



Black three-phase adapter (9009-4/B)

Code
81093



Suspensions - 1.5m white pendant luminaires kit (9000-KIT3-1,5-W)
Material:plastic, colour:white.

Code
81006



Cable cover - White recessed cover (S-9001-R/6-W)
Material:PC, colour:white.

Code
81069



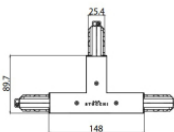
Suspensions - 5m white pendant luminaires kit (9000-KIT3-5-W)
Material:plastic, colour:white.

Code
81007



Tool - Cutter S-9000/T

Code
81005



Junction - Right black T junction - external (9014/B)
Type linear.
Material:PC, colour:black.

Finish	Code
Black	81055



Suspensions - White rigid suspension clip (S-9000-P2-W)
Material:plastic, colour:white.

Code
81018



		<p>Cable cover - Black recessed cover (S-9001-R/6-B) Material:PC, colour:black.</p>	<p>Code 81070</p>
		<p>Cable cover - White cover for recessed X junction (S-9017-R/6-W) Material:PC, colour:white.</p>	<p>Code 81081</p>
		<p>Bracket - Black stiffening bracket (S-9000/333-B) L=180mm, H=24mm, D=20mm. Material:Aluminium, colour:black RAL 9005, processing:Coating.</p>	<p>Finish Black Code 81026</p>
		<p>Cable cover - White cover for recessed junction (S-9010-R/6-W) Material:PC, colour:white.</p>	<p>Code 81072</p>
		<p>Suspensions - 1.5m black pendant luminaires kit (9000-KIT3-1,5-B) Material:plastic, colour:black.</p>	<p>Code 81008</p>
		<p>Junction - Black X junction (9017/B) Type linear. Material:PC, colour:black.</p>	<p>Finish Black Code 81064</p>
		<p>Cable cover - Black cover for recessed T junction (S-9013-R/6-B) Material:PC, colour:black.</p>	<p>Code 81079</p>
		<p>Cable cover Material:white.</p>	<p>Code 83249</p>



Bracket - Anodized stiffening bracket (S-9000/333)

L=180mm, H=24mm, D=26mm.

Material:Aluminium, colour:Anodised Aluminum, processing:Anodisation.

Finish	Code
	81024

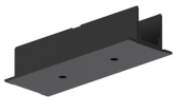


Bracket - White stiffening bracket (S-9000/333-W)

L=180mm, H=24mm, D=26mm.

Material:Aluminium, colour:white RAL 9010, processing:Coating.

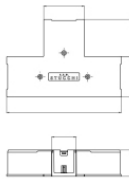
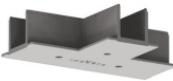
Finish	Code
	81025



Cable cover - Black cover for recessed junction (S-9010-R/6-B)

Material:PC, colour:black.

Code
81073



Cable cover - White cover for recessed T junction (S-9013-R/6-W)

Material:PC, colour:white.

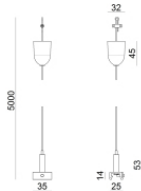
Code
81078



Suspensions - Black rigid suspension clip (S-9000-P2-B)

Material:plastic, colour:black.

Code
81019



Suspensions - 5m black pendant luminaire kit (9000-KIT3-5-B)

Material:plastic, colour:black.

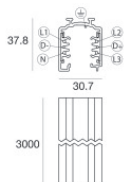
Code
81009



Cable cover

Material:black, colour:black.

Code
83250

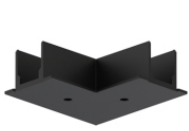


Track

Length: 3000mm; Type of track: Standard.

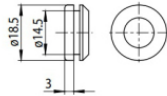
Material:Aluminium, colour:White, processing:Coating.

Finish	Code
	83338



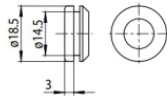
Cable cover
Material:PC, colour:black.

Code
81076



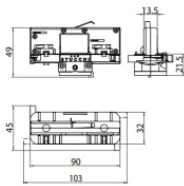
Closing cap - White gasket (S-9001/115-W)
Material:white.

Code
81084



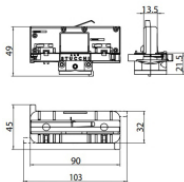
Closing cap - Black gasket (S-9001/115-B)
Material:black, colour:black.

Code
81085



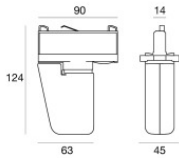
White three-phase/DALI adapter (9009/W)

Code
81094



Black three-phase/DALI adapter (9009/B)

Code
81095



Electronic accessory - TWIL-DALI controller for devices with DALI protocol installed on three-phase track.
installation position: ceiling L=90mm, H=124mm, D=45mm.
Material:ABS Plastic, colour:black.

Code
C-E700008