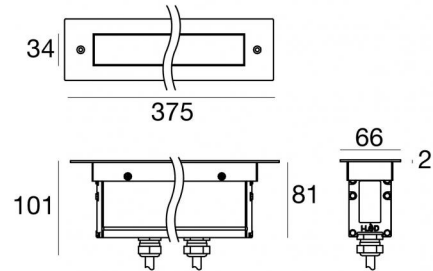


Archiline_I Anti-glare



Lines | 220-240 V
11 x powerLEDs 11.2 W DC - 12.5 W AC | CRI 80
81600M60



Technical data	
Type	Frame
Installation position	Wall lights - Floor
Installation environment	Outdoor
Light Source	LED
Circuit structure	powerLEDs
Optics	60°
Light emission direction	upward
Nominal power	11.2 W DC
Total Power	12.5 W
Source lumens	1716 lm
Nominal input voltage	220 - 240 V AC
Input voltage range	220 - 240 V AC
Frequency	50 - 60 Hz
CCT / Tone	2700 K
Colour rendering index	80 Ra
C.C. / C.V.	AC
Safety class	1
IP	IP67
IK	IK10
Glow wire test	850°
Direct mounting on normally flammable surfaces	Yes
CE	Yes
Driver included	Driver
Dimmable article	DALI
Directional	No
Tilting	No
Walk-over	Yes
Drive-over	No
Cable included	Yes
Cable length	0.2 m
Resin potting	No
Type of light emission	Single emission
Net weight	1.5 Kg
Electrostatic discharge protection	4 KV
Surge protection	6 KV
Optics technology	Dark light
Product technological characteristics	Acquastop - TVS

Finishing casing

Material	Aluminium 6060
Colour	Anodised Black
Processing	15 µm Anodizing

Finishing diffuser

Material	Extra clear glass - Tempered
Colour	transparent
Processing	Silk-screening

Finishing flange

Material	AISI 316 steel
Colour	steel
Processing	Brushing

Cables Electrification+signal

Cable connector	Male Plug 5 Pin
IP (locked condition)	68
Cable connector	Female Socket 5 Pin

Archiline_I Anti-glare



Lines | 220-240 V | 11 x powerLEDs 11.2 W DC - 12.5 W AC | CRI 80 | Base
81600M60

Single emission lines for outdoor application. The super warm white LED light source is composed of 11 powered LEDs with CCT of 2700 K and a CRI 80; the source luminous flux is 1716 lm, with a 153.2 lm/W nominal luminous efficacy.

The device body is made of aluminium 6060 and features a anodised black finish, processed by means of 15 µm anodizing; the diffuser is made of extra clear glass - tempered with a silk-screening treatment. The ingress protection degree is IP67; the total weight is of 1.5 kg.

The total absorbed power is 12.5 W. The power supply cable is included and features a 0.2 m length.

The device features protection class I and can be wall lights or floor-mounted with an outer casing, code 98671 (for concrete or masonry).

Compliant with the EN 60598-1 standard and its specific provisions.

Energy efficiency class

This product contains a light source of energy efficiency class D.

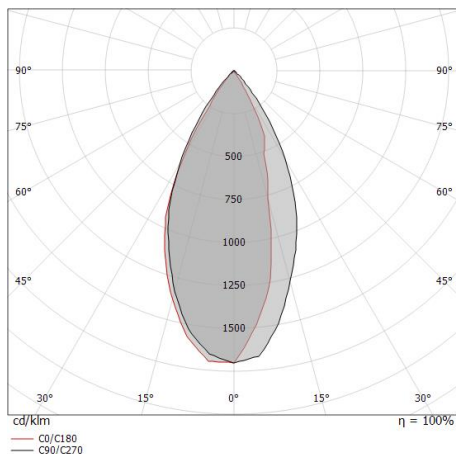
Illuminotechnical Features

Light Output Ratio (LOR)	45 %
Source lumens	1716 lm
Delivered lumens	789 lm
Consumption	12.5 W
Luminaire efficacy	63 lm/W
Colour temperature	2700 K
Standard Deviation of Colour Matching	1.5 Step
Colour rendering index	80 Ra

Standard Operating Ambient Temperature	-20 / +50°C
Ordinary temperature on the glass	40°C

LED Life / Failure Ratio

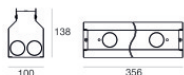
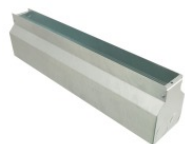
L70 B10 C0 361980h (at Tj 60 Ta 25)



Archiline_I Anti-glare



Archiline_I Anti-glare | Lines | Accessories
81600M60



Outer casing

installation position: wall lights, floor; type of installation: masonry L=356mm, H=138.3mm,
D=100.2mm.

Material:Iron, colour:zinc, processing:Galvanising.

Finish

Grey

Code

98671



Cable and connector

Length 5000 mm.

Code

99822



Cable and connector

Length 1000 mm.

Code

99823



Cable and connector

Length 5000 mm.

Code

99824



Cable and connector

Length 10000 mm.

Code

99825



Cable and connector

Length 1000 mm.

Code

99826