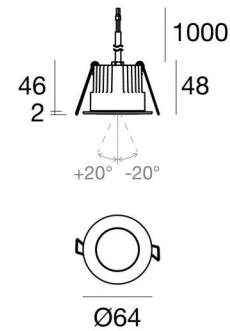










Downlights

1 x powerLED - x powerLED 5 W DC 24 V | CRI 80

81242M30



Technical data	
Type	Encasement with flange
Installation position	Ceiling
Installation environment	Outdoor
Light Source	LED
Circuit structure	powerLED
Optics	Medium Flood + Medium Flood + Medium Flood
Light emission direction	downward + downward + downward
Nominal power	5 W DC
Source lumens	490 lm
Input voltage range	24 V
CCT / Tone	2700 K
Colour rendering index	80 Ra
C.C. / C.V.	CV
Safety class	3
IP	IP67
IK	IK10
Glow wire test	850°
Direct mounting on normally flammable surfaces	Yes
CE	Yes
Driver included	No
C.V. - C.C. Converter	Converter 24V included
Dimmable article	DALI - 1-10V
Directional	No
Tilting	Yes
total angle (vertical plane)	40 °
Walk-over	No
Drive-over	No
Cable included	Yes
Cable length	1 m
Resin potting	Yes
Type of light emission	Single emission
Net weight	0.2 Kg
Electrostatic discharge protection	No
Surge protection	No
Product technological characteristics	Acquastop - TVS

Finishing casing	
Material	Die-cast Aluminium EN AB - 46100
Colour	black
Processing	Open pore anodizing + Powder Coating
Finishing diffuser	
Material	Extra clear glass - Tempered
Colour	transparent
Finishing flange	
Material	AISI 316L steel
Colour	steel
Processing	Brushing
Electronics	
	89488 On/Off Driver 190~250V AC / 180~275V DC 15 W (1 - 2 art.)
	89179 On/Off Driver 198~264V AC 24 W (1 - 4 art.)
	89359 On/Off Driver 198~264V AC / 180~275V DC 48 W (1 - 9 art.)
	99331 On/Off Driver 198~264V AC / 176~275V DC 150 W (1 - 30 art.)
	99660 DALI - 1-10V Controller 24V DC 216 W (- art.)
	C-E500023 DALI - 1-10V - Push and Simply Dim Controller 8~53V DC 576 W (- art.)
Cables Electrification with converter	
Cable connector	No

Downlights | 1 x powerLED - x powerLED 5 W DC 24 V | CRI 80 | Base 81242M30

Single emission recessed downlights for outdoor application. The super warm white LED light source is composed of 1 powered LEDs with CCT of 2700 K and a CRI 80; the source luminous flux is 490 lm, with a 98.0 lm/W nominal luminous efficacy The super warm white LED light source powered LED with CCT of 2700 K and a CRI 80; The super warm white LED light source powered LED with CCT of 2700 K and a CRI 80.

The device body is made of die-cast aluminium en ab - 46100 and features a black finish, processed by means of open pore anodizing + powder coating; the diffuser is made of extra clear glass - tempered. The ingress protection degree is IP67; the total weight is of 0.2 kg.

The total absorbed power is 5 W. The power supply cable is included and features a 1 m length.

The device features protection class III and can be ceiling-mounted, with a 55 mm diameter hole (in plasterboard) with an outer casing, code 99749(for concrete or masonry).

Compliant with the EN 60598-1 standard and its specific provisions.



Distance [m]	Cone diameter [m]	illuminance [lx]
0.5	0.25 0.26	E(0°) 2803 E(C90) 14.3° 1284 E(C0) 14.8° 1269
1.0	0.51 0.53	E(0°) 701 E(C90) 14.3° 321 E(C0) 14.8° 317
1.5	0.76 0.79	E(0°) 311 E(C90) 14.3° 143 E(C0) 14.8° 141
2.0	1.02 1.06	E(0°) 175 E(C90) 14.3° 80 E(C0) 14.8° 79
2.5	1.27 1.32	E(0°) 112 E(C90) 14.3° 51 E(C0) 14.8° 51
3.0	1.53 1.59	E(0°) 78 E(C90) 14.3° 36 E(C0) 14.8° 35

— C0/C180 (Half-peak divergence: 29.6°)
— C90/C270 (Half-peak divergence: 28.6°)

Energy efficiency class

This product contains 3 light sources of energy efficiency class E.

Illuminotechnical Features

Light Output Ratio (LOR)	55 %
Source lumens	490 lm
Delivered lumens	271 lm
Consumption	5 W
Luminaire efficacy	54 lm/W
Colour temperature	2700 K
Standard Deviation of Colour Matching	3 Step MacAdam
Colour rendering index	80 Ra
Black Body Locus	On
Standard Operating Ambient Temperature	-20 / +50°C
Ordinary temperature on the glass	40°C

LED Life / Failure Ratio

L70 B10 C0 247450h (at Tj 60 Ta 25)

UGR

UGR axial	16.9
UGR transversal	16.8
X=4H Y=8H	S=0.25H
Reflection factor	70/50/20

OPTICAL

C0/C180 optics	29°
Light distribution simmetry	Symmetrical

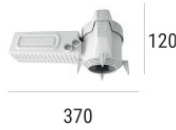
COLOR VECTOR GRAPHIC





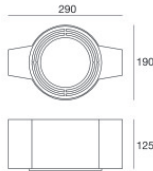
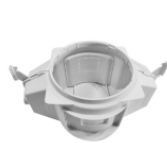
Outer casing
 installation position: ceiling; type of installation: masonry L=200mm, H=113mm, D=137mm.
 Material:polypropylene, colour:white.

Code
89373



Outer casing
 installation position: ceiling; type of installation: masonry L=370mm, H=120mm, D=200mm.
 Material:polypropylene, colour:white.

Code
89374



Outer casing - (to be completed with universal grill 99750)
 installation position: ceiling; type of installation: masonry L=290mm, H=125mm, D=190mm

Code
99749



Accessories for outer casings - Universal grille for outer casing 99749

Code
99750